

Monthly update – North Strathfield

October 2023

Sydney Metro is Australia's biggest public transport project.

The NSW Government is delivering Sydney Metro West – a new underground metro railway which will double rail capacity between Parramatta and the Sydney CBD, with a target travel time of about 20 minutes between the two centres.

Sydney Metro has been granted planning approval to construct twin underground rail tunnels between Westmead and Hunter Street in the Sydney CBD for Sydney Metro West. Acciona Ferroviaria Joint Venture (AFJV) has been awarded the contract to deliver 11 kilometres of twin metro rail tunnels between The Bays and Sydney Olympic Park and excavate five new metro stations, including a station at North Strathfield.

Work during October

Site establishment and excavation work will continue within and around the North Strathfield Metro Station site during October. The main activities will include:

- Construction of retaining structures such as shotcrete walls and ground anchors
- Excavation of the station box and loading out excavated material
- Nozzle excavation at the northern and southern ends of the station box
- Installation of underground and overhead services for onsite utility connections
- Removal of redundant power poles on Queen Street and installation of graphics on hoarding around the site boundary
- Crane lifts of oversize equipment into the station box as well as delivery and removal of oversize equipment
- Line marking and signage installation work
- Taking readings from previously installed groundwater boreholes

This work will be carried out during standard construction hours:

- Monday to Friday 7am – 6pm and Saturday 8am – 6pm

Work outside standard construction hours

Night work will continue to occur in the work area shown on the map overleaf between **8pm and 5am on Monday, Wednesday and Thursday nights from Monday 9 October to Friday 10 November 2023.**

AFJV will be carrying out utility and road island restoration work and oversize equipment deliveries around the North Strathfield Metro Station site. Some of the road restoration, hoarding graphics installation and maintenance as well as oversize deliveries must be undertaken outside standard construction hours to minimise impacts on traffic and to ensure the safety of motorists, pedestrians and workers. Night work will be carried out on no more than two consecutive nights, no more than three nights per week and no more than 10 nights per month at any one location.

What to expect

- **Queen Street will be closed between Wellbank and Pomeroy streets from 9pm to 5am for three nights during October** (see over for details)
- There may be some noise associated with the work but we will try to minimise this as much as possible
- Property and business access will be maintained at all times
- Noise blankets will be used to minimise disturbance during night work
- There will be no disruption to supply of utility services
- Saw cutting and hammering work will be completed by midnight for night work

Equipment used

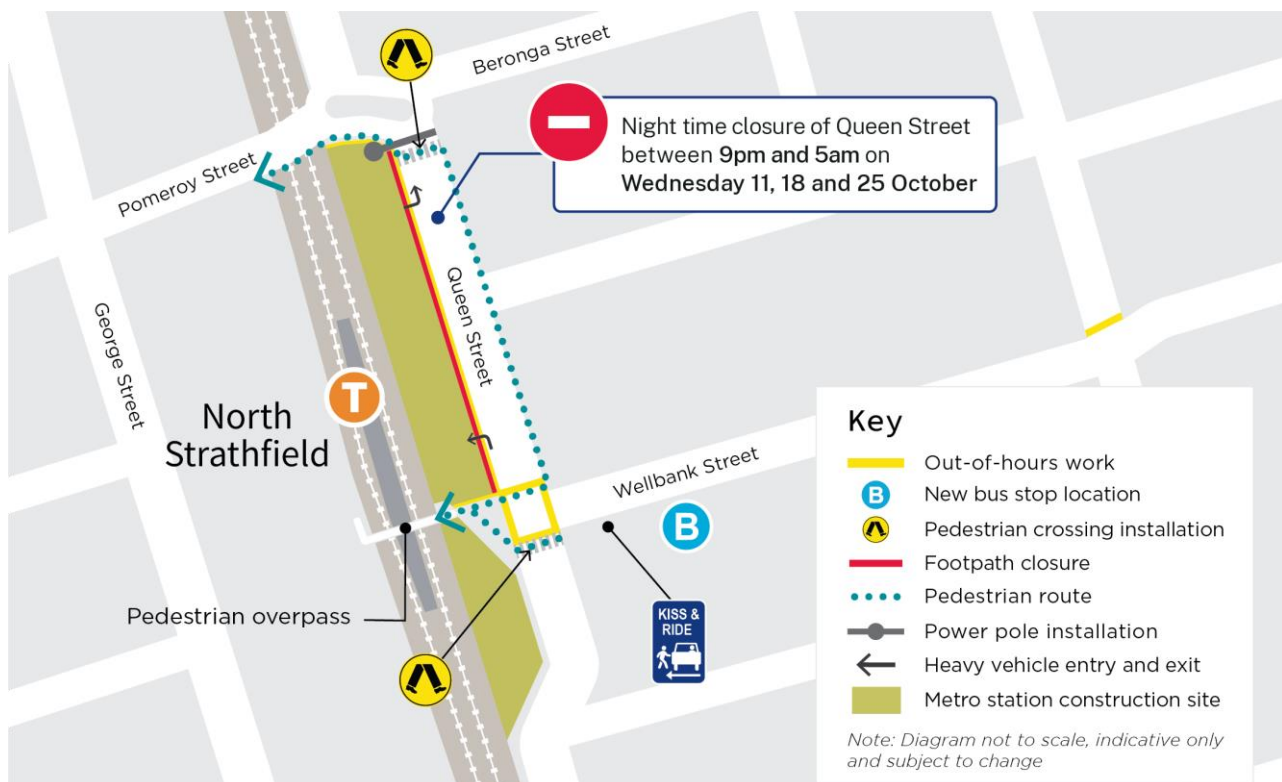
Equipment used for this work includes but is not limited to: trucks, light vehicles, excavators, graders, rattle guns, watercarts, concrete saws, bobcats, jack hammers, vacuum trucks, vibratory rollers, cranes, piling rigs, elevated work platforms, concrete trucks/pumps, street sweeper and hand tools.

Changes to traffic, pedestrian and cyclist routes

Traffic control will be in place to assist motorists, pedestrians and cyclists at entry and exit points to the construction site. The utility investigation work taking place in the surrounding streets will require some temporary footpath closures. Traffic control will be in place so access and two-way traffic can be maintained.

On **Wednesday 11 October, Wednesday 18 October and Wednesday 25 October 2023, between 9pm and 5am only, Queen Street will be closed between Wellbank and Pomeroy streets** for crane lifts of oversize equipment into the station box. Local access will be maintained. Detours will be in place via Wellbank Street, Concord Road and Beronga Street. Traffic control will be in place to assist motorists.

North Strathfield work area



Contact us:

Please contact Liz from the community team on **1800 612 173** if you have any questions, complaints or would like to provide feedback about the work. We will continue to keep you updated on the progress of work in your area. If you would prefer to receive updates by email, please send a request to metrotunnelsAFJV@transport.nsw.gov.au and we will add you to the distribution list.

Sydney Metro has launched Sydney Metro Connect – a new way to stay informed. You can download Sydney Metro Connect on the App Store or get it on Google Play. Thank you for your cooperation while we complete this essential work.

1800 612 173 Community information line open 24 hours

metrotunnelsAFJV@transport.nsw.gov.au

Sydney Metro West, PO Box K659, Haymarket NSW 1240



Access information in over **100 languages**

Download **Sydney Metro Connect** from the App store or get it on Google Play.



If you need help understanding this information, please contact the Translating and Interpreting Service on **131 450** and ask them to call us on **1800 612 173**