



Crows Nest Station site from the air (looking north-east over the Site A building and Hume Street)

# Crows Nest Station taking shape

August 2023

Work at Crows Nest Station has progressed considerably over the past six months with all three station buildings now standing two storeys above ground.

All interior levels have been built including the platform, concourse, station entry and service levels in between, and fit-out works are progressing throughout. Some of the final finishes and fittings are in progress such as the platform paving, wall panels and lighting.

All platform screen doors have now been installed and escalators connecting the concourse to the platform are in place at Sites A and B. Lift shafts are being built and lifts and public art will soon be installed.

In July work began on the Site C over station development, located on the corner of Clarke and Hume streets. Once complete, this will be a nine-storey commercial office building with roof-top terrace.

## Sydney Metro is Australia's biggest public transport project

Services started in May 2019 in the city's North West with a train every four minutes in the peak. Metro rail will be extended into the CBD in 2024, with new metro railway stations at Crows Nest, Victoria Cross, Barangaroo, Martin Place, Pitt Street and Waterloo, and new metro platforms at Central, and then onto Bankstown in 2025.

## Have your say

Please send your feedback regarding Crows Nest Station site by scanning the QR code.





# Key milestones achieved

## Perimeter wall complete

In late December 2022 the 63<sup>rd</sup> and final below ground perimeter wall was poured at the southern end of the station box. Each of the 63 walls took approximately two weeks to build, measure 1.2 metres thick and range between 24 and 35 metres wide and a height of 25 metres.

## Completion of over-size beam deliveries

After 20 months of deliveries, the final precast concrete beam was delivered and installed onsite in December 2022. These 25-metre-long, 65-tonne beams were each manufactured in Newcastle and delivered to the site at night when traffic volumes were low. They are a key structural component of the station as they provide additional strength to each station level to allow for large open spaces which would traditionally be supported by columns within the station levels.

## Topping out the station buildings

In the first six months of this year, all structural works were completed for the three station buildings with the pouring of each structure's roof. After two and a half years of construction, the completion of this work means the station exterior and fit-out works can now steadily progress.

## Commencement of public domain works

Last year the team started improvements to the surrounding streetscape on Oxley Street. Since January, work has progressed to Clarke and Hume streets with upgrades to underground services and footpaths. By the time the station opens, all footpaths and roads surrounding the station will be upgraded. This will include landscaping, installation of street furniture and construction of a new dedicated cycle lane on Hume Street.

## Dynamic rail testing

In late April, the first train for City & Southwest began its testing underneath Sydney Harbour. This is not only a huge milestone for Sydney Metro and the City & Southwest team but one that marks the first time trains have ever run underneath Sydney Harbour.

On-track train testing and commissioning will continue throughout 2023, ahead of passenger services starting through the Sydney CBD in 2024.



Final station box perimeter wall pour



Final roof pour at Pacific Highway



Dynamic testing between Chatswood and Sydenham



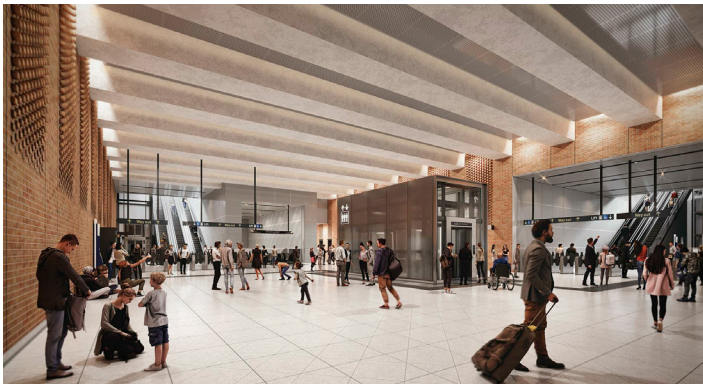
# Current snapshot of work

Artist impressions of the Crows Nest Station site are slowly coming to life with the structures now standing two storeys tall. The platform level is nearing completion and interior brickwork of the concourse is complete.

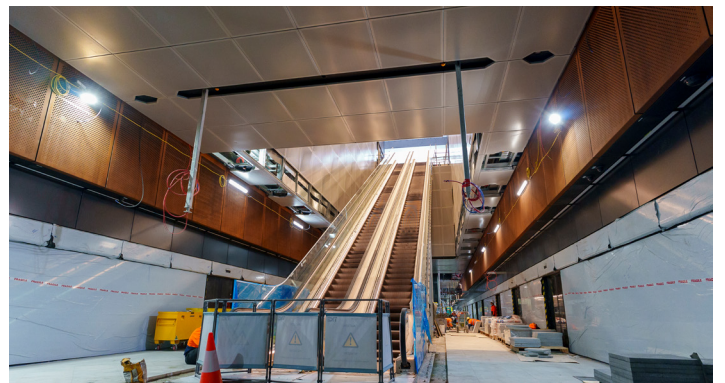
## Pacific Highway station entrance building



## Concourse level



## Platform level



## Trackwork





# Looking ahead

As the station buildings start to take shape over the next few months, you will see less scaffold surrounding the site and more of the outside façade and brickwork.

Other key features installed will be the station entrance canopies, commuter lifts and escalators, interior fittings and finishes, service connections, precinct work and further testing and commissioning activities for metro services to commence in 2024.

Oversized deliveries and night work will be required to complete some of these activities. This may involve changes to traffic and pedestrian access.

When the Clarke Lane and Hume Street rebuilds are complete, they will not be re-opened straight away. Both roadways must remain closed until public domain works and permanent utility and road tie-ins are completed.

This is expected to be completed in late 2023.

## Six-month look ahead activity summary

Activity*	Day / night work	Aug	Sep	Oct	Nov	Dec
Removal of the steel and concrete capping beam and foundation piles surrounding the station perimeter	Day	●	●	●	●	
Public domain works –upgrading surrounding local streets	Both	●	●	●	●	●
Pacific Highway intersection upgrades	Night		●	●	●	●
Road resurfacing –Pacific Highway, Clarke, Oxley and Hume streets and Clarke Lane	Night					●
Escalator and lift installation	Both	●	●	●	●	●
Station façade works	Day	●	●	●	●	●
Interior fit-out	Both	●	●	●	●	●
Site C over station development	Both	●	●	●	●	●
Hume and Clarke Street (bridges) upgrade work	Day	●	●	●	●	●

\*activities and duration are indicative and subject to change





## Crows Nest community – naming our last tower crane



Once again the Crows Nest Station site team reached out to local pre-school Kelly's Place Children's Centre to help name the new Site C crane located on the corner of Clarke and Hume streets.

Previously named cranes Muscles (named by Kelly's Place) and Giraffe (named Froebel's Early Learning Centre) were recently removed from site to enable completion of the Pacific Highway station structures. The cranes have been an important part of the build, enabling materials, plant and equipment to be efficiently and safely lifted in and around the site.

The new Site C tower crane named "Lifty" will be used to build the OSD. One important element will be lifting the pre-cast facade panels that can weigh up to nine tonnes.

A W Edwards visited Kelly's Place in June to thank the children for their help and brought along one of our crane operators to share some fun facts about cranes and answer questions about Lifty.





# Crows Nest over station development (OSD) update

At Crows Nest Station, there will be three OSD buildings.

The OSD at Site C is a the nine-storey commercial building located above the Clarke Street station entrance. It was approved by Department of Planning and Environment and is being constructed by A W Edwards. The other two OSDs at Site A and B will be constructed by Thirdi Group once the station buildings are complete.

Site A and Site B OSDs are subject to separate planning approvals. The community will again have the opportunity to provide feedback when Thirdi Group exhibits the detailed Stage 2 development application prior to starting construction.

You can find more information [here](#) or by scanning the QR code.



Artist impression of site C building

## Fun facts



**2,270,254 kwh of green solar power used**



**95% recycling rate of construction waste**



**817.52 tonnes of carbon emissions saved by recycling construction waste**



**2,938 people have worked on the project**



**350 workers employed every day**

### Contact us

Thank you for your cooperation and understanding while we complete this essential work.

If you have any questions about Crows Nest Station, please call **1800 171 386** (24-hour community information line) and ask for the **Crows Nest Station team** or email [crowsnestmetrostation@transport.nsw.gov.au](mailto:crowsnestmetrostation@transport.nsw.gov.au)



### Translating and interpreting service

If you need help understanding this information, please contact the Translating and Interpreting Service on **131 450** and ask them to call us on **1800 171 386**.

