

Monthly update – Parramatta

25 March 2023

Sydney Metro is Australia's biggest public transport project.

The NSW Government is delivering Sydney Metro West - a new underground metro railway which will double rail capacity between Parramatta and the Sydney CBD, with a target travel time of about 20 minutes between the two centres.

Sydney Metro has been granted planning approval to construct twin underground rail tunnels between Westmead and Hunter Street in the Sydney CBD for Sydney Metro West.

Gamuda Australia and Laing O'Rourke Consortium (GLC) has been awarded the contract to deliver nine kilometres of twin metro rail tunnels between Westmead and Sydney Olympic Park, excavation for two new metro stations, a stabling and maintenance facility at Clyde and a precast facility at Eastern Creek.

Site preparation and establishment work – April 2023

Tunnelling contractor, GLC will continue site preparation and establishment work within and around the Parramatta metro station site during April to prepare for the start of major construction. These activities will be carried out during standard construction hours:

- **Monday to Friday 7am to 6pm and Saturday 8am to 6pm.**

Work will involve:

- Ongoing archaeological investigations and backfilling of areas once complete
- Ongoing site establishment including installing fencing, hoarding, barriers and signage
- Continuing geotechnical and groundwater monitoring and utility investigations within and around the site
- Removing concrete sections in stages with saw cutters and jack hammers to clear the site
- Removing waste materials including demolition waste, building and hazardous materials
- Constructing a water treatment plant, concrete foundations and a piling mat excavation activities
- Delivering and removing machinery, equipment and materials to and from site
- Aerial drone filming on-site. This will be in line with Civil Aviation Safety Authority guidelines
- Installing survey monitoring equipment on buildings around site.
- Surveying and marking up of service locations with erasable marking chalk or water based paint on Church and Macquarie Street.

All hazardous material removal work is being undertaken in accordance with SafeWork NSW guidelines.

Out-of-hours work

To minimise interruption to local traffic and to ensure the safety of motorists, pedestrians and workers around the site, some work must be undertaken outside standard construction hours.

Out-of-hours work will involve:

- Oversized machinery and equipment deliveries to site between **6pm and 7am from Saturday 1 April to Friday 28 April 2023**. We will notify you again when our plans are in place.
- Resurfacing the footpath with pavers in stages on Macquarie Street and United Lane will take place **24 hours a day, Monday to Friday from Monday 3 April to Friday 28 April 2023**.
- Utility upgrades on George Street and Church Street between **6pm and 7am, Monday to Sunday until Friday 28 April 2023**. This will involve:
 - saw-cutting, trenching and potholing
 - removing spoil and stockpiling in the Parramatta site.
 - backfilling trenches and temporary restoration of impacted areas.

At times, low impact concreting work may extend beyond standard construction hours during weekdays. Finishing works using hand tools may be required. Out-of-hours deliveries are in line with Road Occupancy Licence; and Transport for NSW requirements to work in the road corridor and for the movement of oversized vehicles.

What to expect:

- Building management will be contacted to arrange surveying equipment to be installed.
- Some activities will generate noise, but this will be minimised as much as possible.
- Access to businesses will be maintained, unless arrangements are made with you in advance.
- Temporary removal of parking on George Street and United Lane. Permanent parking will be removed on a section of George Street and Macquarie Lane from 1 April 2023.
- Temporary signage and traffic control in place to assist motorists, pedestrians and cyclists with changes to traffic conditions. Allow some extra time for your journey when travelling near these areas.
- Environmental measures are in place to mitigate construction impacts, including noise and vibration monitoring and dust suppression.
- We do not need to interrupt your power supply to do this work.

Changes to traffic and pedestrian access - Horwood Place and Macquarie Lane from 1 April 2023

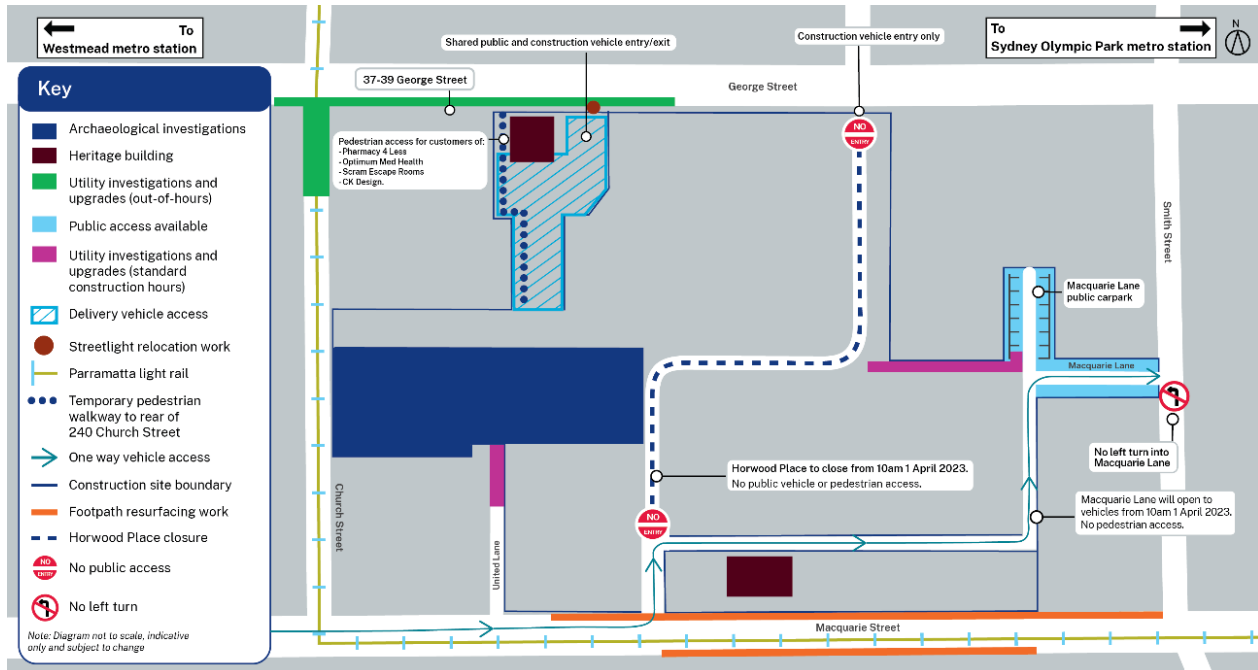
Vehicle access along Horwood Place will be redirected to Smith Street via a newly constructed Macquarie Lane.

Traffic and pedestrian changes from 10am Saturday 1 April 2023 will include:

- Horwood Place will be redirected via Macquarie Lane to Smith Street.
- Access to George Street will be from Smith Street.
- Macquarie Lane will be one-way vehicle access only. Entry will be from Macquarie Street. No vehicle access will be permitted from Smith Street.
- Macquarie Lane public carpark will remain accessible from Macquarie Street.
- Pedestrian and vehicle access for customers and deliveries to the rear of businesses on the corner of Church and George Street will be from a new entry location near 37-39 George Street.

Equipment used: Equipment for this work will include but is not limited to hand tools, cranes, generators, truck and dogs, survey equipment, light vehicles, drill rigs, excavators, dozers, vibratory rollers and compactors, concrete agitators, vacuum excavation trucks, tipper trucks, delivery vehicles, fencing, road saw and traffic control devices.

Parramatta metro station work areas:



Contact us

Please contact Olivia from GLC's Community team on **1800 612 173** or by email if you have any questions, complaints or would like to provide feedback about the work, including appropriate respite periods. We will continue to keep you updated on the progress of work in your area.

If you would prefer to receive updates by email, please send a request to metrotunnelsGLC@transport.nsw.gov.au and we will add you to the distribution list.

Thank you for your cooperation while we complete these essential works.

 **1800 612 173** Community information line open 24 hours

 metrotunnelsGLC@transport.nsw.gov.au

 Sydney Metro West, PO Box K659, Haymarket NSW 1240

 If you need an interpreter, contact TIS National on **131 450** and ask them to call **1800 612 173**

