

# Construction update - Claremont Meadows

24 March 2023

**Sydney Metro is Australia's biggest public transport project.**

Sydney Metro – Western Sydney Airport is the new metro railway line which will service Greater Western Sydney and the new Western Sydney International (Nancy-Bird Walton) Airport. A city-shaping project, the 23-kilometre new railway will connect the Western Sydney Aerotropolis in the south with St Marys in the north – where customers can connect to the existing Sydney Trains suburban T1 Western Line. The NSW and Australian governments have a shared objective of having Sydney Metro – Western Sydney Airport operational when the airport opens for passenger services.

CPB Contractors Ghella was awarded the tunnelling contract for Sydney Metro – Western Sydney Airport in December 2021.

## Ongoing construction activities and commencement of tunnelling: Gipps Street and Great Western Highway

Construction at the Claremont Meadows services facility site is continuing over the next two months. Please see the map overleaf for work locations.

Most work will be carried out during standard construction hours **Monday to Friday 7am to 6pm and Saturday 8am to 1pm**. Some out-of-hours work activities will be carried out to mitigate quality and safety risks, and in line with the project Environment Protection Licence, Road Occupancy Licences, and Transport for NSW requirements. Surrounding residents and businesses will be notified in advance of any out-of-hours work.

## Out-of-hours work in April and May will include:

- Oversized plant and equipment deliveries, excavated material removal, survey, utility adjustments and concrete formwork
- Shaft and tunnel excavation, and ground support installation
- Concrete pours and associated works may occur **up to six days per week from Monday to Friday 6pm to 10pm and Saturday 1pm to 4pm**
- Tunnelling work will commence at Orchard Hills in May 2023, progressing to Claremont Meadows. This activity will occur **24 hours a day, seven days a week**.

## Standard construction hours work in April and May will include:

- Ongoing site establishment including earthworks, maintaining vegetation and installing temporary site utilities
- Shaft excavation including bulk earthworks, rock bolting and shotcreting
- Concrete works, including formwork, for future services facility and various structures
- Drilling for geotechnical investigations with a borehole rig, excavating for test pits and ongoing well monitoring
- Commissioning and operating of a water treatment plant
- Delivering and removing plant, equipment and excavated material with truck and trailers
- Safely removing hazardous materials, in line with SafeWork NSW and Environment Protection Authority guidelines, and Sydney Metro's health and safety procedures
- Site photography using drone cameras above the construction site.

## Out-of-hours work six-month lookahead:

Activity	Timing
Shaft excavation, ground support installation	April-September 2023
Oversized plant and equipment deliveries, concrete formwork, excavated material removal	April-October 2023
Tunnel excavation	May-September 2023
Tunnel lining works	June-July 2023

## What to expect:

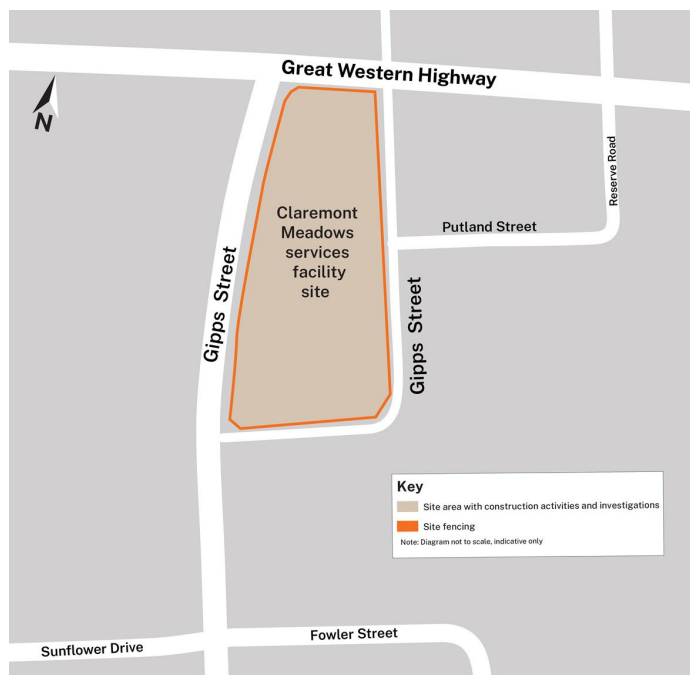
- Work activities will generate noise, vibration and dust. Mitigation measures will be in place to minimise these impacts including noise and vibration monitoring, respite periods and dust suppression
- Increased worker and vehicle movements in and around the work site.

## Equipment used:

Equipment includes but is not limited to traffic management devices, drone cameras, vacuum excavation vehicle, excavators with hydraulic attachment, heavy vehicles and trailers, drilling rig, bolting rig, shotcrete rig, roller, concrete agitators, concrete pumps, shotcrete pump, water carts, pneumatic drills, concrete saws, mobile cranes, bobcats, chain saws, power generators, compaction rammers, survey equipment, light vehicles, specialist survey vehicles, spoil trucks and earthworks equipment.

## Changes to traffic, pedestrian and cyclist routes:

When required, traffic controllers and signage will be in place to assist motorists, pedestrians and cyclists safely around work areas. Traffic changes may include lane closures, contraflow traffic flow and stop-slow traffic controls, along Gipps Street. The times of these changes will vary and are dependent on road authority approvals. Property owners will be separately notified if access to driveways will be affected.



A Detailed Noise and Vibration Impact Assessment for the area has been prepared including proposed mitigation measures as a result of noise modelling. We invite your feedback if alternative measures may be required for your specific circumstances. Contact your local Place Manager, Michelle on 1800 717 703 or email [sydneymetrowsa@transport.nsw.gov.au](mailto:sydneymetrowsa@transport.nsw.gov.au) to discuss your preferences or to be added to the distribution list to receive these updates by email.

Thank you for your cooperation while we complete these essential works.

## Meet the project representatives:

We invite you to meet with our project representatives on Saturday 22 April between 9am and 12pm at Claremont Meadows Shopping Centre. The team will be providing the community with the latest updates on the Station boxes and tunnelling works for Sydney Metro – Western Sydney Airport.

### Contact us

If you have any questions or would like more information please contact our project team:

**1800 717 703** Community information line open 24 hours

**[sydneymetrowsa@transport.nsw.gov.au](mailto:sydneymetrowsa@transport.nsw.gov.au)**

Sydney Metro – Western Sydney Airport, PO Box K659, Haymarket NSW 1240



### Translating and interpreting service

If you need help understanding this information, please contact the Translating and Interpreting Service on **131 450** and ask them to call us on **1800 717 703**

Sydney Metro invites you to

# Community Information Session

9.00am – 12.00pm, Saturday 22 April 2023,  
Claremont Meadows Shopping Centre,  
182 – 186 Sunflower Drive, Claremont Meadows 2747

Join us for the latest updates on the Sydney Metro – Western Sydney Airport, Station Boxes and Tunnelling Project.

