



View of the Pitt Street North site, corner of Park and Pitt streets.

# Pitt Street integrated station development

January 2023

## Sydney Metro is Australia's biggest public transport project.

Services started in May 2019 in the city's North West with a train every four minutes in the peak. The metro rail will be extended into the CBD and beyond to Bankstown, with new CBD metro railway stations at Martin Place, Pitt Street and Barangaroo and new metro platforms at Central.

By 2030, Sydney will have four metro lines, with 46 stations and a 113 kilometre standalone metro railway system. There will be ultimate capacity for a metro train every two minutes in each direction under the Sydney city centre.

CPB Contractors (CPB) have been engaged by Sydney Metro for the construction of the new Pitt

Street Station in the Sydney CBD. Pitt Street Station will have two station entrances with over station buildings above, train platforms and underground pedestrian tunnels.

Oxford Properties, Investa and Mitsubishi Estate (for Parkline Place), and Oxford Properties and Investa (for Indi Sydney City), with CPB Contractors as design and construction contractor, will construct the buildings over the new Pitt Street Station.

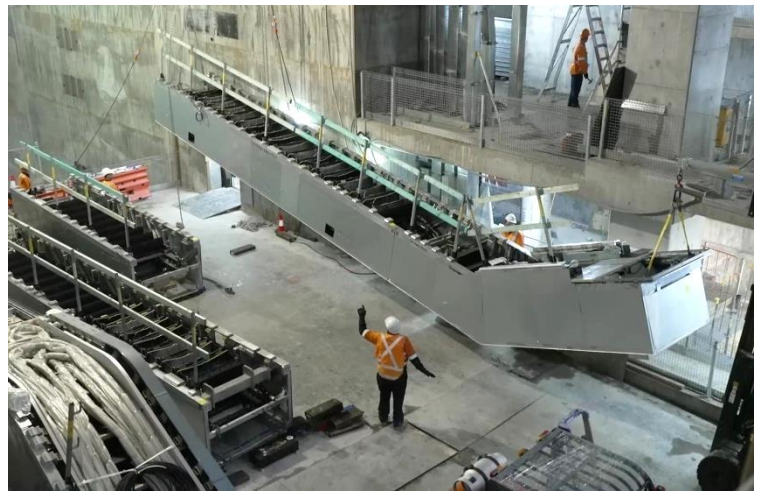
Work to build the new Pitt Street integrated station development (ISD) began in January 2021, with construction scheduled for completion in 2024 ahead of the opening of Sydney Metro City & Southwest.

# Construction update

## Pitt Street South

The Pitt Street South site (corner of Bathurst and Pitt streets) reached a significant milestone in October 2022 with escalators installed and the station structure complete. The overall Pitt Street South structure has reached level 7, and construction has commenced to build Indi Sydney City – the building above the Pitt Street South station site. Work is continuing to remove formwork and scaffolding ahead of fit-out works within the station structure.

*Image right: A section of the South escalator being lifted into position.*



## Pitt Street North

The Pitt Street North site (corner of Castlereagh, Park and Pitt streets) has reached level 8. The North station structure is 90 percent complete and installation of escalators has commenced. Work is ongoing in the basement levels of the station structure to install utility services, construct blockwork walls and complete fit-out. The jumpform around the structural core of the Pitt Street North OSD – Parkline Place, has been established, and work is taking place to construct the building above the station.

*Image left: The entrance to Pitt Street Station North facing Park Street*

## Pitt Street station platforms

Work is progressing in the station platforms, with all of the glass reinforced concrete panels and platform screen doors installed. The ceiling tube cladding is 75 percent complete, and 80 percent of the cladding panels have been installed above the platform screen doors. By February 2023, 90 percent of the floor tiles will be installed along the platforms.



July 2022



November 2022

*Images above: Fit-out of the Pitt Street station eastern platform is nearing completion.*

# Line-wide work

## Installing a maze of cables and equipment

With trackwork at Pitt Street Station now complete, workers have been turning their attention to installing the thousands of brackets, trays, ducts, pipes, cables, wires and hundreds of items of equipment needed to operate the driverless metro train system.

The installation of the high voltage power cables in the tunnels (pictured) has now been completed, with 95 kilometres of 33,000 volt and 11,000 volt cables installed throughout the twin metro tunnels, in total.



*Workers at Pitt Street Station are installing 80 kilometres of cables, including high voltage cables to power the station and trains.*

Akin to the beating heart and arteries distributing power to the trains, the high voltage power supplies and numerous metro equipment rooms within Pitt Street Station are also needed to energise and ventilate the station platforms and twin tunnels.

By the time the mechanical and electrical fit-out of Pitt Street Station and the platform trackways is completed in early 2023, some 80 kilometres of cables, conduits and trays will have been installed within the station and trackways alone, together with over 200 major pieces of equipment, including six large transformers and four giant station ventilation fans, each the size of a truck.

Down beside the platforms, workers have been using specially equipped rail vehicles designed to safely move personnel, componentry, and equipment along the trackways to install everything needed to turn the twin tunnels into a working railway - such as fire mains, walkways and brackets supporting cable trays, cabling, signalling and communication systems, and the overhead wire used to power the trains.

Construction of the Sydney Metro City & Southwest Line-wide Works, including work in the tunnels, is being delivered by a joint venture of two CIMIC Group companies, CPB Contractors and UGL Limited.

For more information on the tunnel fit-out work, email [linewidemetro@transport.nsw.gov.au](mailto:linewidemetro@transport.nsw.gov.au)

## Students site tour at Pitt Street

The Pitt Street integrated station development (ISD) team had the honour of hosting students from the Youth Off The Streets Chapel School and Holy Cross College on two separate occasions.

Students had the opportunity to take a guided tour around the Pitt Street ISD project, view the construction activities taking place to build the metro station, and were encouraged to ask questions which could assist their studies and future career path into construction.



# Six-month look ahead

Activities will include (subject to change)	Jan	Feb	Mar	Apr	May	Jun
Fit-out of station including tiling and wall cladding						
Public domain work						
Construction of Parkline Place and Indi Sydney City						
Completing construction of the North station building structure						
Façade installation work at the South station site						
Façade installation work at the North station site						
Installation of utility services for the North and South sites						
Escalator installation at the North station site						
Tower crane relocation for North station						

## Over station development (OSD) work

Work is taking place to build Parkline Place and Indi Sydney City.

Construction activities will include:

- steel fixing, formwork and concrete pours to construct the building structure
- concrete pumping into the site from vehicles parked in work zones
- installing building hoists, scaffolding and screens
- installing building façade panels
- installing utility services and internal fit-out of the building
- material deliveries via trucks parked in work zones and using the tower crane to lift and move materials.



For more information on the OSD work, please visit the CPB Pitt Street integrated station development (ISD) website at [bit.ly/CPBPSISD](http://bit.ly/CPBPSISD), or scan the QR code.

## Extended work hours

Our approved standard construction hours are 7am to 6pm Monday to Friday and 8am to 6pm on Saturday. We carry out some work activities outside of standard construction hours.

Please register your email at [pittstreetmetro@transport.nsw.gov.au](mailto:pittstreetmetro@transport.nsw.gov.au) to receive email updates about work activities, including the scheduling of work outside of standard construction hours.

We acknowledge that this work continues to have an impact on many local residents and businesses and we thank you for your patience and cooperation so far.

### Contact us

If you have any questions or would like more information please contact our project team:

**1800 171 386** Community infoline open 24 hours  
**[pittstreetmetro@transport.nsw.gov.au](mailto:pittstreetmetro@transport.nsw.gov.au)**  
Sydney Metro City & Southwest  
PO Box K659, Haymarket NSW 1240



### Translating and interpreting service

If you need help understanding this information, please contact the Translating and Interpreting Service on **131 450** and ask them to call us on **1800 171 386**.