

Project update

January 2023

Sydney Metro is Australia's biggest public transport project

Services started in May 2019 in the city's North West with a train every four minutes in the peak. Metro rail will be extended into the CBD and beyond to Bankstown. There will be new CBD metro railway stations at Martin Place, Pitt Street and Barangaroo and new metro platforms at Central.

By 2030, Sydney will have four metro lines, with 46 stations and a 113 kilometre standalone metro railway station. There will be ultimate capacity for a metro train every two minutes in each direction under the Sydney city centre.

Since January 2021, CPB Contractors have been delivering Sydney Metro Pitt Street Station in the Sydney CBD.

Systems Connect (an unincorporated joint venture between CPB Contractors and UGL Limited) is delivering Line-wide Work, which includes installing metro rail track, power systems and infrastructure to turn the excavated tunnels into a working railway between Chatswood and Sydenham.

Pitt Street Station construction work – January 2023

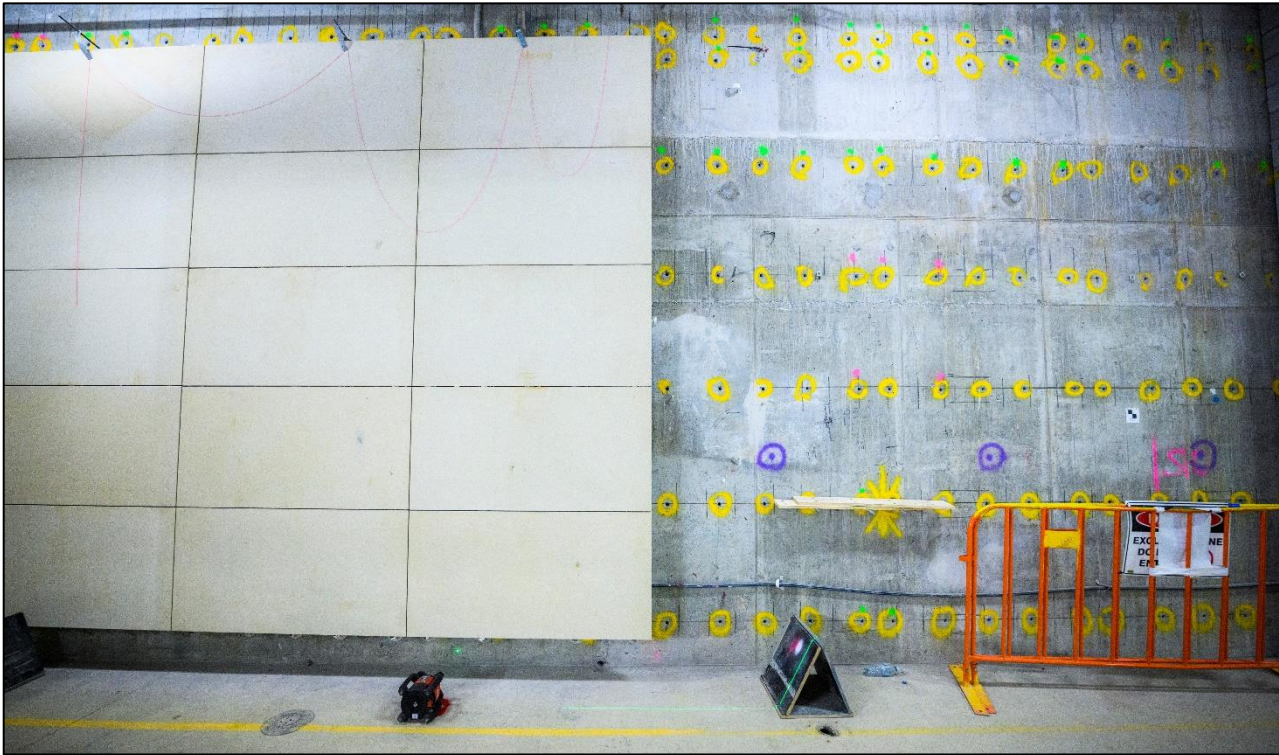
Monday to Friday, 7am to 6pm and Saturday, 8am to 6pm

- saw-cutting and drilling to remove the site perimeter concrete capping beam/wall
- continuation of steel fixing and formwork to construct the building structures
- concrete pours for floors, walls, lift shafts and into underground caverns
- use of the tower cranes for the delivery and removal of equipment and material in and out of the sites
- installing and dismantling jumpform systems, scaffolding and tower cranes
- waterproofing to seal the external walls of the excavated station shafts
- fit-out in the station platforms, underground pedestrian tunnels, metro tunnel, cross passages and basement rooms including internal communication, high voltage electrical and ventilation rooms
- welding and hammering for the modification of site hoarding
- modification to graphics and signage on site hoarding and site sheds
- scanning, surveying, saw cutting and potholing existing utility services and placing markings on the ground to identify underground services
- installing utility services following excavation of road pavements and footpaths around the sites
- cable hauling from tunnels to the high voltage electrical rooms
- installing cables, communications and signalling equipment
- blockwork and shotcreting work
- use of work zones on Pitt, Park, Castlereagh and Bathurst streets for material and equipment deliveries and concrete pumping
- oversized deliveries including of large cable drums and tunnel ventilation equipment
- installing external building panels using the tower crane
- removing sections of the footpath and kerb to construct site driveways. If identified, asbestos removal following road and footpath excavation
- temporary road and lane closures and pedestrian detours on roads surrounding the work areas.

The Pitt Street integrated station development (ISD) sites will be closed from **Saturday 24 December 2022 to Tuesday 3 January 2023**. During this shutdown period there will be minimal work taking place on site including deliveries, inspections, fit-out and utility work in basement levels and maintenance work.

The Pitt Street ISD sites will reopen on **Wednesday 4 January 2023**.

Pitt Street Station construction work



Sandstone panels are being installed in the Pitt Street South station cavern.

Over station development (OSD) work

Oxford Properties, Investa and Mitsubishi Estate (for Parkline Place), and Oxford Properties and Investa (for Indi Sydney City), with CPB Contractors as design and construction contractor, will construct the buildings over the new Pitt Street metro stations.

Construction is progressing on Parkline Place and Indi Sydney City.

For more information on the OSD work, please visit the CPB Pitt Street integrated station development (ISD) website at bit.ly/CPBPSISD, or scan the QR code to the right.



Upcoming out-of-hours work at Pitt Street Station

Due to daytime traffic volumes and the need to ensure pedestrian safety, some work will need to be completed outside of standard construction hours during extended evening, night and weekend work shifts.

Community notifications containing further details about out-of-hours work will be delivered to properties ahead of the work. Email updates will continue to be sent to those on the project update subscription list.





Project updates

Please subscribe to project email updates to be kept up to date on the work schedule, including the scheduled dates and times of out-of-hours work activities. You can subscribe by providing your email address to pittstreetmetro@transport.nsw.gov.au

For more information on work being carried out by the CPB Pitt Street Station team, please contact Melinda or Sarah on **1800 171 386** or email pittstreetmetro@transport.nsw.gov.au

Thank you for your cooperation and understanding while we complete this essential work.

Contact us

-  **1800 171 386** Community information line open 24 hours
-  pittstreetmetro@transport.nsw.gov.au
-  Sydney Metro City & Southwest, PO Box K659, Haymarket NSW 1240
-  If you need an interpreter, contact TIS National on **131 450** and ask them to call **1800 171 386**