

Construction update – Aerotropolis

16 December 2022

Sydney Metro is Australia’s biggest public transport project.

Sydney Metro – Western Sydney Airport is the new metro railway line which will service Greater Western Sydney and the new Western Sydney International (Nancy-Bird Walton) Airport. A city-shaping project, the 23-kilometre new railway will connect the Western Sydney Aerotropolis in the south with St Marys in the north – where customers can connect to the existing Sydney Trains suburban T1 Western Line. The NSW and Australian governments have a shared objective of having Sydney Metro – Western Sydney Airport operational when the airport opens for passenger services.

CPB Contractors Ghella was awarded the tunnelling contract for Sydney Metro – Western Sydney Airport in December 2021.

Ongoing construction activities and commencement of tunnelling

Construction at the Aerotropolis site at 215 Badgerys Creek Road is continuing over the next 12 weeks. Please see the map overleaf for work locations.

Most work will be carried out during standard construction hours **Monday to Friday 7am to 6pm and Saturday 8am to 1pm**. Some out-of-hours work activities such as oversized plant and equipment deliveries, survey, concreting and utility adjustments may be carried out to mitigate quality and safety risks, and in line with the project Environment Protection Licence, Road Occupancy Licences, and Transport for NSW requirements.

Tunnelling work, including haulage, is planned to commence in early 2023 and will be in operation 24 hours a day, seven days a week. Surrounding residents will be notified ahead of out-of-hours work.

The Aerotropolis site will be closed for the holiday period from **Friday 23 December to Tuesday 3 January 2023**. Regular security, environmental and safety monitoring of worksites will continue during this time.

Work will include:

- Ongoing site establishment including maintenance, and installing internal roads, fencing, signage, site sheds, facilities and environmental controls
Excavation and placement of concrete piles with piling rigs, and capping beam construction including concrete pours
- Site wide and station bulk excavation including bulk earthworks, anchor installation, rock bolting and shotcreting
- Build stub tunnels for proposed future extensions of the Metro line
- Site wide concrete works for miscellaneous structures
- Water treatment plant installation, operation and dewatering of sediment basin
- Delivering and removing plant, equipment and excavated material with truck and trailers
- Installing survey markers on existing road, concrete or posts along and up to 50 metres either side of the tunnel alignment. Small concrete pads will be installed at some locations to enable marker placement
- Safely removing hazardous materials, in line with SafeWork NSW, Environment Protection Authority guidelines, and Sydney Metro health and safety procedures.

What to expect:

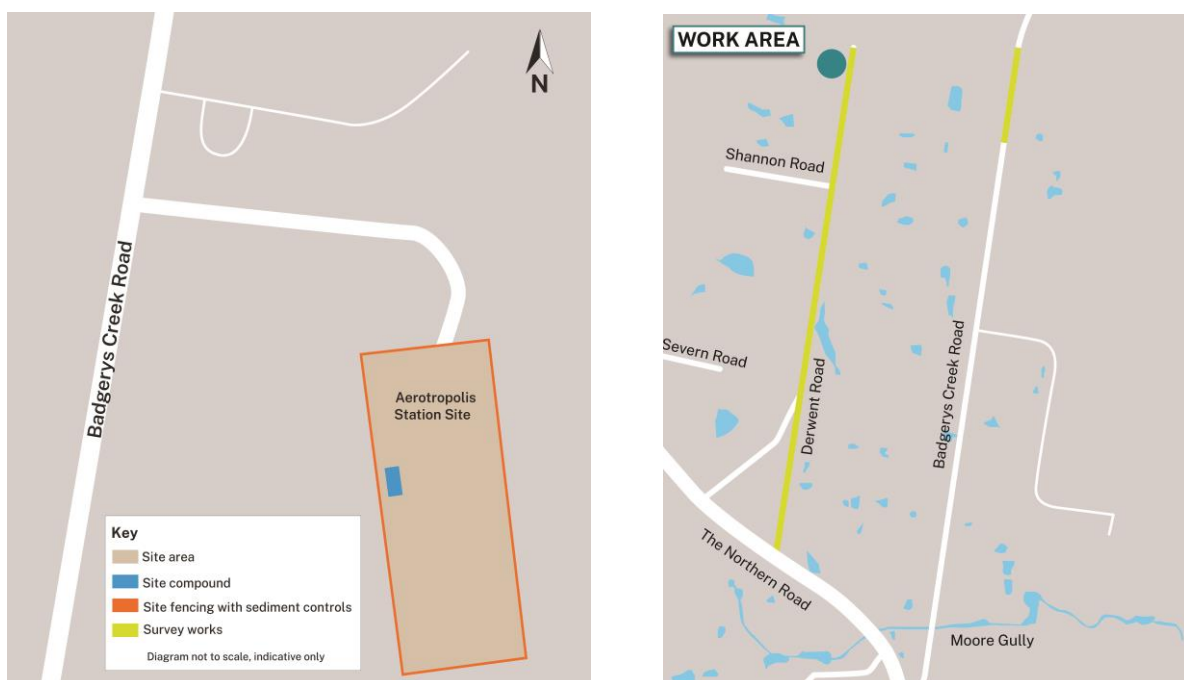
- Work activities will generate noise, vibration and dust. Mitigation measures will be in place to minimise these impacts including noise and vibration monitoring, respite periods and dust suppression
- Increased vehicle movements in and around worksites.

Equipment used:

Equipment for this work includes but is not limited to drill and piling rigs, mobile cranes, concrete pumps, bolting rig, shotcrete rig, excavators and earthmoving equipment, pneumatic drills, mulchers, profiler, asphalt roller, concrete agitators, concrete pumps, concrete saws, chain saws, generators, bobcats, articulated dump trucks, forklifts, telehandlers, compaction rammers, ride-on mowers, powered hand tools, traffic control, bollards, utility scanning and survey equipment, specialist survey vehicles, water carts, mist-sprayers, vacuum excavation vehicle, heavy vehicles, light vehicles and trailers.

Changes to traffic, pedestrian and cyclist routes:

During the work, traffic control will be in place to assist motorists, pedestrians and cyclists with any changes to traffic conditions. This may include contraflow traffic flow and stop-slow traffic controls. The times of these changes will vary and are dependent on road authority approvals. Property owners will be separately notified if access to driveways will be affected or private property access is required.



Contact us:

Please contact your local Place Manager, Lisa on **1800 717 703** if you have any questions or would like to provide feedback about the work. If you would prefer to receive these updates by email, please email us at sydneymetrowsa@transport.nsw.gov.au.

Thank you for your cooperation while we complete these essential works.



1800 717 703 Community information line open 24 hours



sydneymetrowsa@transport.nsw.gov.au



Sydney Metro – Western Sydney Airport, PO Box K659, Haymarket NSW 1240



If you need an interpreter, contact TIS National on **131 450** and ask them to call **1800 717 703**