

Notification – Five Dock

28 October 2022

Sydney Metro is Australia's biggest public transport project.

The NSW Government is delivering Sydney Metro West - a new underground metro railway which will double rail capacity between Parramatta and the Sydney CBD, with a target travel time of about 20 minutes between the two centres.

Sydney Metro has been granted planning approval to construct twin underground rail tunnels between Westmead and Hunter Street in the Sydney CBD for Sydney Metro West. Acciona Ferrovia Joint Venture (AFJV) has been awarded the contract to deliver 11 kilometres of twin metro rail tunnels between The Bays and Sydney Olympic Park and excavate five new metro stations, including a station at Five Dock.

Out-of-hours work at Five Dock – oversize equipment delivery

AFJV will be delivering and installing a large gantry crane at the eastern construction site at Five Dock from **8am Saturday 5 November until 4 pm Sunday 6 November 2022**. In order to lift the gantry crane into place from the oversize delivery vehicle, we will first need to temporarily assemble a specialised lifting crane on Waterview Street next to the site.

The gantry crane needs to be delivered overnight on the weekend due to road restrictions for oversize vehicles, to minimise interruption to traffic and to ensure the safety of motorists, pedestrians, cyclists and workers.

The work will include:

- Truck delivery of lifting crane components to the work area via Waterview Street (see map overleaf)
- Assembly of the lifting crane on Waterview Street next to the construction site
- Late night oversize delivery and lifting into place onsite of the gantry crane components
- Disassembly of the lifting crane and removal of lifting crane components by truck

What to expect:

- To ensure enough clear space with an exclusion zone for this activity to be completed safely, AFJV will **temporarily close a section of Waterview Street** adjacent to our construction site **from 12pm Saturday 5 November until 4pm Sunday 6 November 2022** (see map overleaf). Waterview Street will be 'local access only' between the Council car park exit and the closed section during this period. A detour will be in place for all other road users.
- On-street parking along Waterview Street will be closed between First Avenue and Second Avenue from **7am Friday 4 November until 4pm Sunday 6 November 2022**
- On-street parking in First Avenue between Great North Road and Waterview Street will be closed from **6pm Saturday 5 November to 4pm Sunday 6 November 2022**. Two-way traffic will be maintained under traffic control during this period. There may be minor delays
- There will be some short access delays for residents of Waterview Street during deliveries
- A mobile crane will be moved onto the site from Great North Road via Second Avenue under traffic control
- Truck access for deliveries during the day and after-hours will be via First Avenue and Waterview Street
- Generators will be used during this work (see map overleaf for locations)
- There will be some noise associated with this work but we will try to minimise this as much as possible
- Traffic controllers will be in place to safely manage all traffic and pedestrian movements

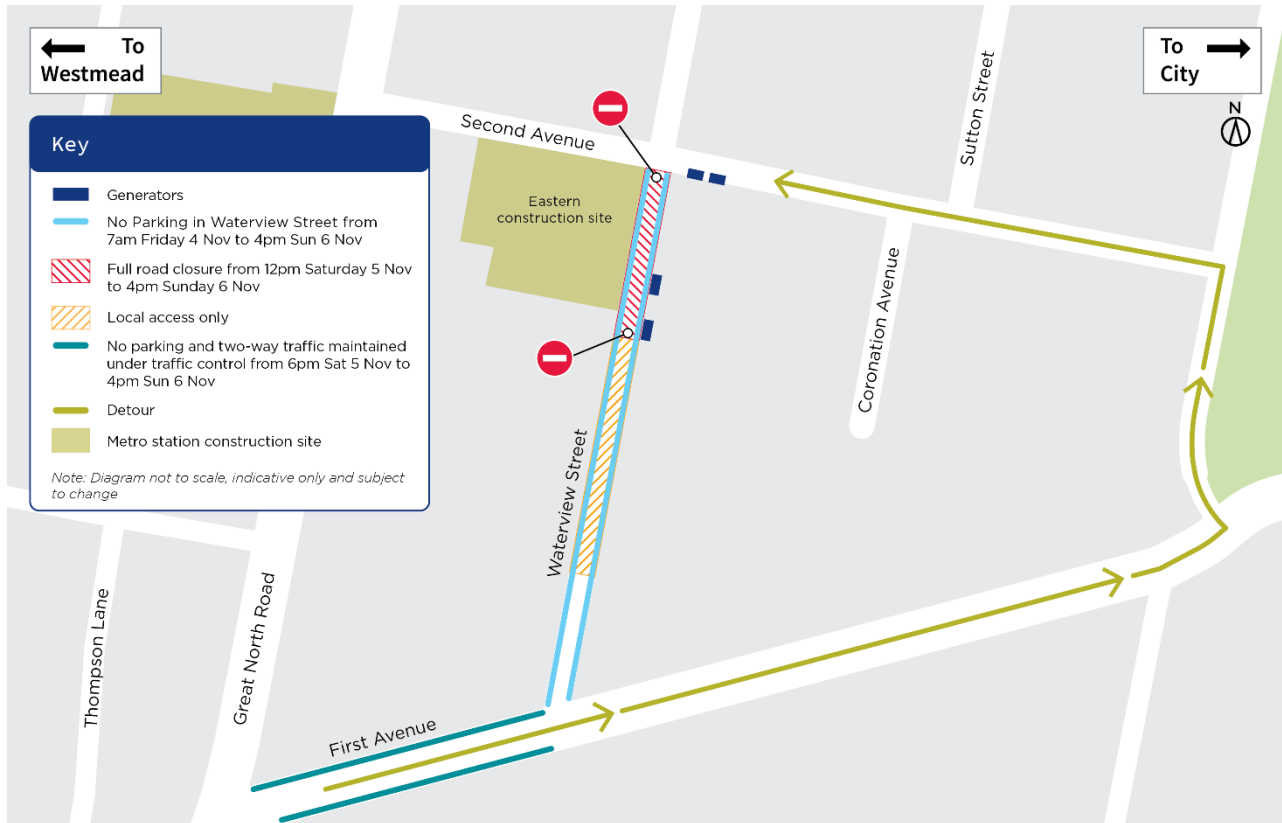
Equipment used:

Equipment used for this work includes but is not limited to: semi-trailers, temporary lifting cranes, franna crane, light vehicles, generators, telehandlers, lighting towers, site generator, elevated work platforms, power hand tools.

Changes to traffic, pedestrian and cyclist routes:

Traffic control will be in place to assist motorists, pedestrians and cyclists with temporary changes to traffic conditions in Waterview Street and First Avenue (see map).

Five Dock out-of-hours gantry crane delivery work area



Contact us:

Please contact Jeremy from the AFJV community team on 1800 612 173 if you have any questions or would like to provide feedback about the work, including appropriate respite periods. We will continue to keep you updated on the progress of work in your area. If you would prefer to receive updates by email, please send a request to metrotunnelsAFJV@transport.nsw.gov.au and we will add you to the distribution list.

Sydney Metro has launched Sydney Metro Connect - a new way to stay informed. You can download Sydney Metro Connect on the App Store or get it on Google Play.


Thank you for your cooperation while we complete this essential work.

 **1800 612 173** Community information line open 24 hours

 **MetrotunnelsAFJV@transport.nsw.gov.au**

 Sydney Metro West, PO Box K659, Haymarket NSW 1240

 If you need an interpreter, contact TIS National on **131 450** and ask them to call **1800 612 173**



Sydney Metro Connect
Use the QR code to download from the App Store or Google Play.

