

## Notification – Aerotropolis

28 September 2022

Sydney Metro is Australia’s biggest public transport project.

Sydney Metro – Western Sydney Airport is the new metro railway line which will service Greater Western Sydney and the new Western Sydney International (Nancy-Bird Walton) Airport. A city-shaping project, the 23-kilometre new railway will connect the Western Sydney Aerotropolis in the south with St Marys in the north – where customers can connect to the existing Sydney Trains suburban T1 Western Line. The NSW and Australian governments have a shared objective of having Sydney Metro – Western Sydney Airport operational when the airport opens for passenger services.

CPB Contractors Ghella was awarded the tunnelling contract for Sydney Metro – Western Sydney Airport in December 2021.

### Construction activities: Aerotropolis compound, 215 Badgerys Creek Road

We are continuing our site establishment works at Aerotropolis. Additional works will commence from **5 October for up to 12 weeks**, weather and site conditions permitting.

#### Work hours:

Work will be completed during standard construction hours Monday to Friday 7am to 6pm and Saturday 8am to 1pm. Residents and businesses will be notified in advance of any out-of-hours work.

#### Work will include:

- Establishing the site with general activities such as maintenance, earthworks, setting up environmental controls and installing fencing and signage
- Installation of site sheds and facilities
- Utility service connections
- Internal access road construction
- Piling and foundation works
- Excavation of future station box and associated ground support activities, including concreting
- Delivery of oversized plant and equipment, which may be delivered out-of-hours in line with the Road Occupancy License requirements and Transport for NSW requirements
- Removal of hazardous materials in accordance with SafeWork NSW and Environment Protection Authority (EPA) guidelines, as well as Sydney Metro’s health and safety procedures.

#### What to expect:

- Traffic controllers and signage will be used to direct pedestrians and traffic safely around the work area
- Increased vehicle movements in and around worksites
- Construction machinery and equipment operating onsite.

#### Equipment used:

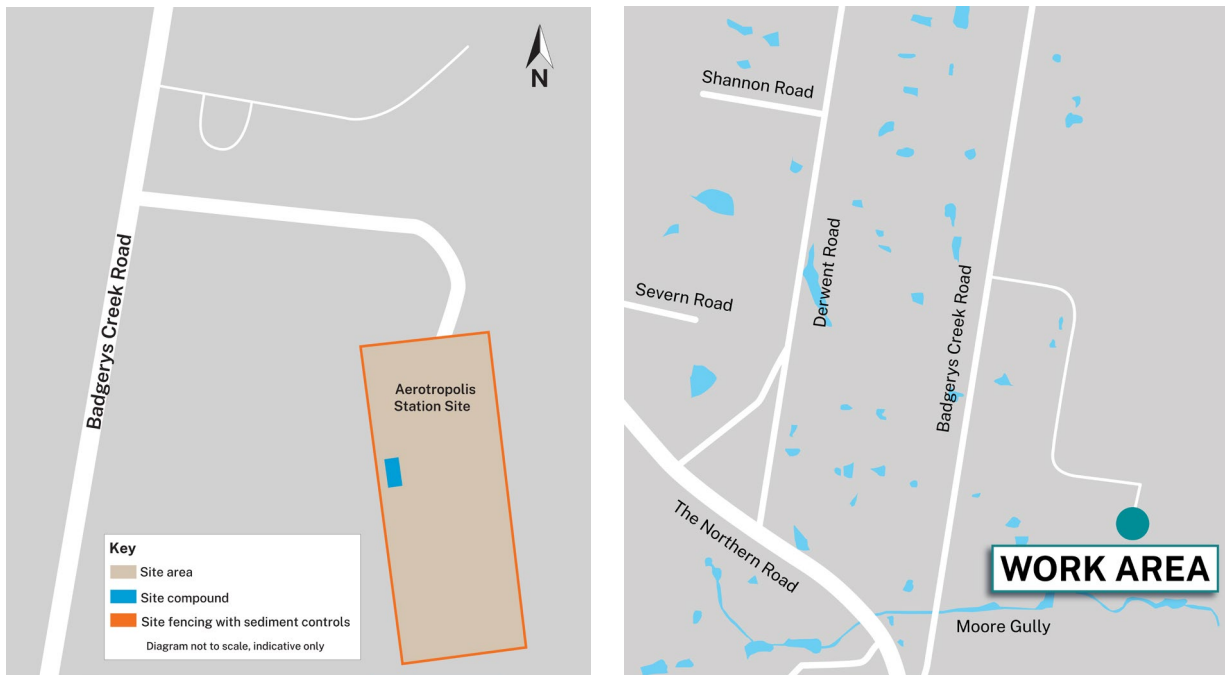
Equipment for this work includes but is not limited to drill and piling rigs, mobile cranes, excavators and earthmoving equipment, mulchers, concrete agitators, concrete pumps, articulated dump trucks, trucks, forklifts, telehandlers, ride-on mowers, powered hand tools, traffic control, bollards, utility scanning and survey equipment and light vehicles.

#### Changes to traffic, pedestrian and cyclist routes:

During the work, traffic control will be in place to assist motorists, pedestrians and cyclists with any changes to traffic conditions. This may include contraflow traffic flow and stop-slow traffic controls. The times of these changes

will vary and are dependent on road authority approvals. Property owners will be separately notified if access to driveways will be affected or private property access is required.

Please see the map below for the work locations.



### Minimising community impacts

We understand construction activities may cause disruption to our closest neighbours, and every effort will be made to minimise the impacts where possible, including conducting on-site monitoring to ensure compliance with strict environmental conditions relating to noise, vibration and dust management and respite periods.

### Contact us:

Your local Place Manager for Sydney Metro – Western Sydney Airport is Michelle. Michelle will be your main contact for questions and enquiries regarding the project and can be contacted on **1800 717 703**.

If you'd like to receive these updates by email, please contact Michelle who can add you to the distribution list. Our email is [sydneymetrowsa@transport.nsw.gov.au](mailto:sydneymetrowsa@transport.nsw.gov.au). Thank you for your cooperation while we complete these essential works.

 **1800 717 703** Community information line open 24 hours

 [\*\*sydneymetrowsa@transport.nsw.gov.au\*\*](mailto:sydneymetrowsa@transport.nsw.gov.au)

 Sydney Metro – Western Sydney Airport, PO Box K659, Haymarket NSW 1240

 If you need an interpreter, contact TIS National on **131 450** and ask them to call **1800 717 703**

SBT0053