

## Notification – Iron Cove Bay

14 January 2022

Sydney Metro is Australia's biggest public transport project.

The NSW Government is delivering Sydney Metro West - a new underground metro railway which will double rail capacity between Parramatta and the Sydney CBD, with a target travel time of about 20 minutes between the two centres. Sydney Metro was granted planning approval to construct twin underground rail tunnels between Westmead and The Bays for Sydney Metro West in March 2021.

Acciona Ferroviaria Joint Venture (AFJV) has been awarded the contract to deliver 11 kilometres of twin metro rail tunnels between Sydney Olympic Park and The Bays and excavate five new metro stations, including a station at Five Dock.

### Geotechnical investigation work: Iron Cove Bay

The tunnelling contractor, AFJV, is undertaking site investigations and early work to prepare for construction which is due to start later in January.

Marine geotechnical investigation work will be carried out in **Iron Cove Bay** between Lilyfield and Rodd Point from **Monday 17 January to Monday 21 February 2022** (weather and site conditions permitting) during standard construction hours:

- Monday to Friday 7am – 6pm and Saturday 8am – 2pm

Marine geotechnical testing will be undertaken to gather information about underground rock and soil conditions to inform engineering design and construction planning (see map overleaf).

**The safety of the community and our workforce is our top priority. All work will be undertaken in line with NSW Public Health Orders, using a range of COVID-safe measures and plans.**

#### The work will include:

- Transporting to site and establishing the overwater drilling barge in place at each of the four (4) locations consecutively from east to west (see map overleaf)
- Drilling a small diameter hole around 50-60 metres deep to extract rock core samples for scientific analysis
- Filling and sealing borehole on completion of work
- Relocating barge to next site.

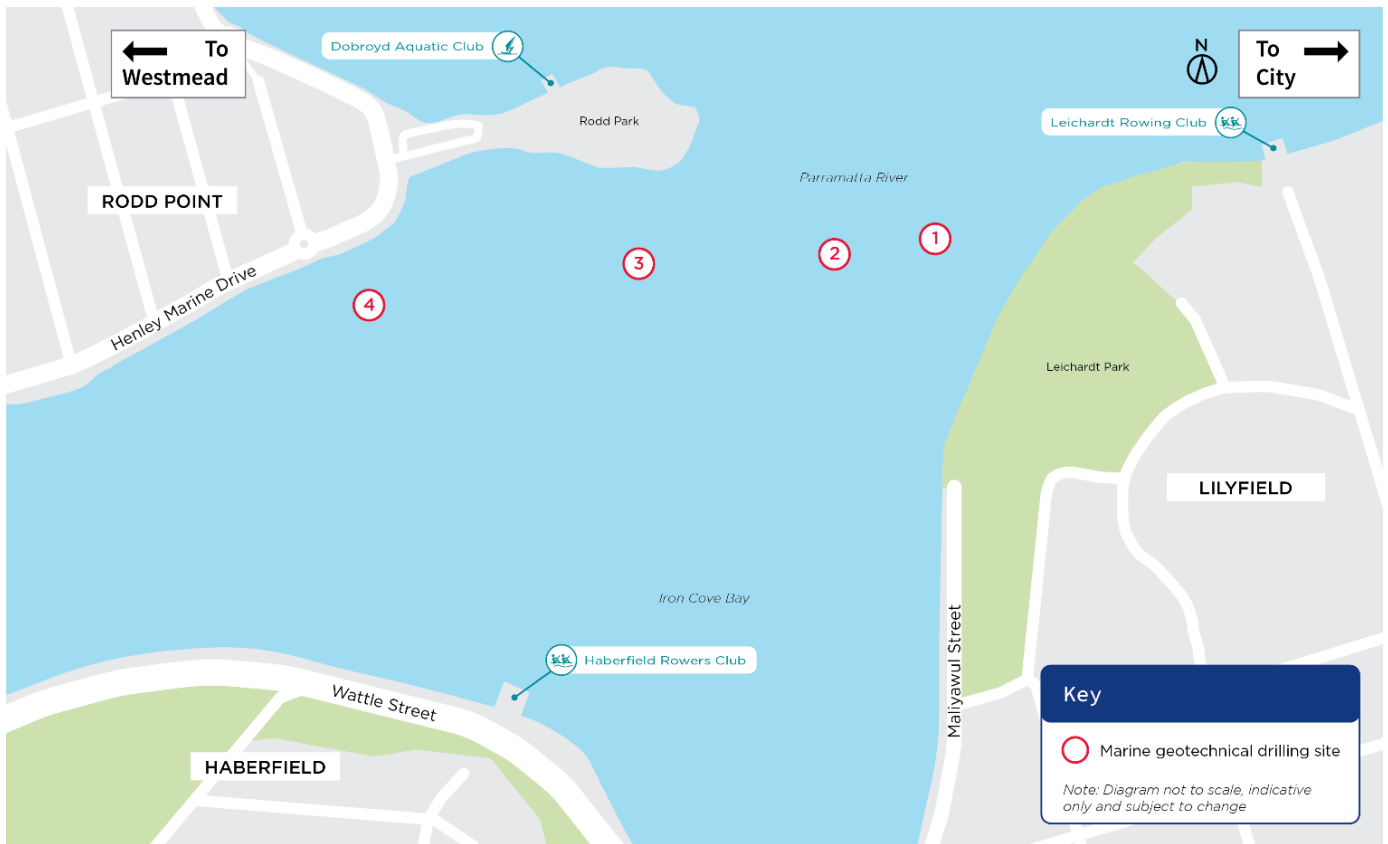
#### What to expect:

- The barge will remain in place at each location for between five (5) to ten (10) days depending on conditions
- The drilling barge will display appropriate day shapes and navigation lights. Flashing navigation lights will be fitted on each of the four support legs
- A 25m exclusion zone around the barge will be indicated by floating buoys and signage
- The Port Authority Harbourmaster has approved this work and the bargemaster will co-ordinate all movement with their Vessel Traffic Services (VTS)
- VHF radio Channel 13 and the emergency response channel VHF16 will be monitored during the work
- There will be some noise associated with this work, however we will endeavour to minimise impact

## Equipment used:

Equipment used for this work includes but is not limited to: overwater barge, drill rig, small personnel and tug boats, small concrete mixers and hand tools.

## Iron Cove Bay marine geotechnical investigation work area




## Contact us:




Please contact Jeremy from the AFJV community team on 1800 612 173 if you have any questions about the project. We will continue to keep you updated on the progress of work in your area. If you would prefer to receive updates by email, please send a request to [metrotunnelsAFJV@transport.nsw.gov.au](mailto:metrotunnelsAFJV@transport.nsw.gov.au) and we will add you to the distribution list.

Sydney Metro has launched Sydney Metro Connect - a new way to stay informed.

You can download Sydney Metro Connect on the App Store or get it on Google Play. Thank you for your cooperation while we complete this important work.



Sydney Metro Connect  
Use the QR code to download from  
the App Store or Google Play.



 **1800 612 173** Community information line open 24 hours

 **[MetrotunnelsAFJV@transport.nsw.gov.au](mailto:MetrotunnelsAFJV@transport.nsw.gov.au)**

 Sydney Metro West, PO Box K659, Haymarket NSW 1240

 If you need an interpreter, contact TIS National on **131 450** and ask them to call **1800 612 173**