



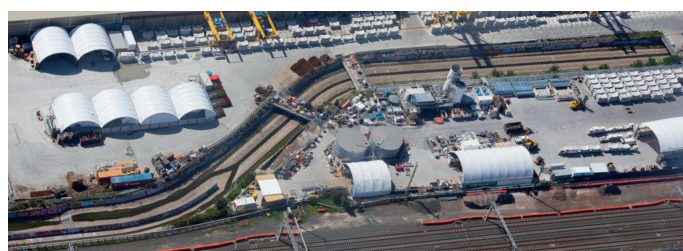
The upgraded storm water drainage system

Community to benefit from stormwater upgrade

The JHCPBG team is continuing work to upgrade the stormwater drainage system in and around the Sydney Metro stabling yard. The drainage system is being relocated underground and will operate with an increased capacity. The upgrade will assist in mitigating flooding that occurs in the area following heavy rain (in particular on Murray Street and Edinburgh Road). Connection of the final major underground stormwater line in this new system was completed in December 2020.

To complete the new drainage system JHCPBG is relocating utilities, installing new drainage pits and drains in and around Edinburgh Road, and reinstating kerbs, gutters and pavements.

In coming weeks, you will see the hoarding mural being reinstalled along Edinburgh Road.



Aerial view of the former drainage system



During construction of the drainage system upgrade

Sydney Metro is Australia's biggest public transport project. It will transform Sydney, delivering more trains and faster services for customers across the network.

Sydney Metro City & Southwest extends the new metro network from the end of Sydney Metro Northwest at Chatswood, under Sydney Harbour, through the CBD, and west to Bankstown.

John Holland CPB Ghella (JHCPBG) is building the 15.5-kilometre long twin railway tunnels between Chatswood and Sydenham and excavating six new metro stations.

Three-month look ahead

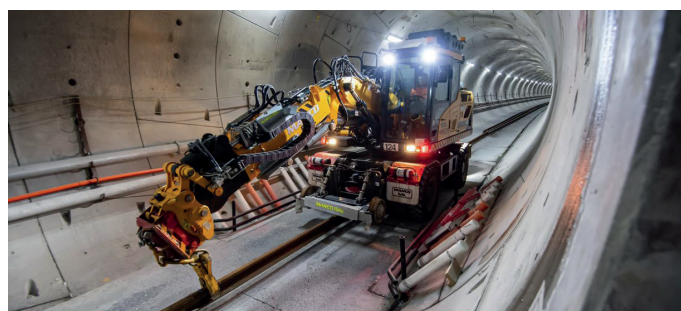
Activity (subject to change)	March	April	May
Stormwater upgrade in Railway Parade	•		
Construction of retaining walls	•		
Removal of redundant structures including spoil shed, water treatment plant and floor slabs	•		
Reinstatement and repainting hoarding mural	•	•	
Deliveries of plant and materials	•	•	•
Utilities upgrades along Edinburgh Road	•	•	•
Earthworks and concreting for stormwater upgrade	•	•	•

Marrickville stabling yard

The stabling yard will house trains while they are not in operation or while they undergo maintenance. Other activities being completed inside the stabling yard include installation of large pre-fabricated stormwater culverts, raising the level of the site, removal of redundant structures including floor slabs, completion of retaining walls and backfilling around the new walls.

Line-wide paving the way

Systems Connect, a joint venture between CPB Contractors and UGL Limited is delivering the Line-wide work, including installing metro rail track, power systems, communications and infrastructure to turn the excavated tunnels into a working railway between Chatswood and Sydenham. Line-wide work also includes the services and buildings needed for the future stabling yard at Marrickville.



Rail distribution and track laying

In mid-2020, Systems Connect started a gradual move into the southern dive site. To date, work has involved accessing the tunnel to fit it out, installing a gantry at the dive site, starting work to build the southern tunnel portal and early work to prepare for rail installation, including pouring of concrete track slabs which will sit underneath the rail and help hold it in place.

Over the coming months you will see and hear more from Systems Connect. For now, you can watch a video showing the rail distribution at Marrickville on the Sydney Metro Facebook page.

All the rail has now been distributed into Marrickville and track laying from the southern dive will start soon.

If you have any questions about the tunnel fit out work please contact Grace on **1800 171 386** (24-hour community information line) or email linewidemetro@transport.nsw.gov.au.

Project update along the Sydney Metro City & Southwest alignment







At the end of 2020 JHCPBG completed excavation work at the Pitt Street and Victoria Cross stations, handing these sites over to follow-on contractors who will be installing the new rail tracks and fitting out the future stations for operation.

Want to stay up to date?

Register today for community email updates at tunnels@transport.nsw.gov.au.

Contact us

For more information, enquiries or complaints please contact us at:

-  **1800 171 386** 24-hour community information line
-  tunnels@transport.nsw.gov.au
-  sydneymetro.info
-  www.facebook.com/SydneyMetro
-  **Sydney Metro City & Southwest**
PO Box K659, Haymarket NSW 1240
-  If you need an interpreter, call TIS National on **131 450** and ask them to call **1800 171 386**