



JANUARY 2022

The canopy over Platforms 12-13 taking shape.

Reinstating Platforms 13-14

To build the new metro platforms at Central Station, Platforms 13-15 were removed and a traffic deck was installed to make logistics possible while the station box was excavated underneath. Now that excavation in the metro box is finished and the greater part of the fit-out has been completed, work has begun on the reinstatement of Platforms 13-14. Platform 15 (previously used only as a service platform) will not be reinstated. One of the first stages of reinstating the platforms is installing the platform canopies. This process started in October 2021, and will continue through to April 2022.

The metal frames of the canopies are being pre-fabricated off-site at Kurri Kurri, NSW (the same yard where the new roof over the Northern Concourse was made), and then transported to Central Station in sections on over-size, over-mass trucks. The canopies are then being reassembled in position on site.

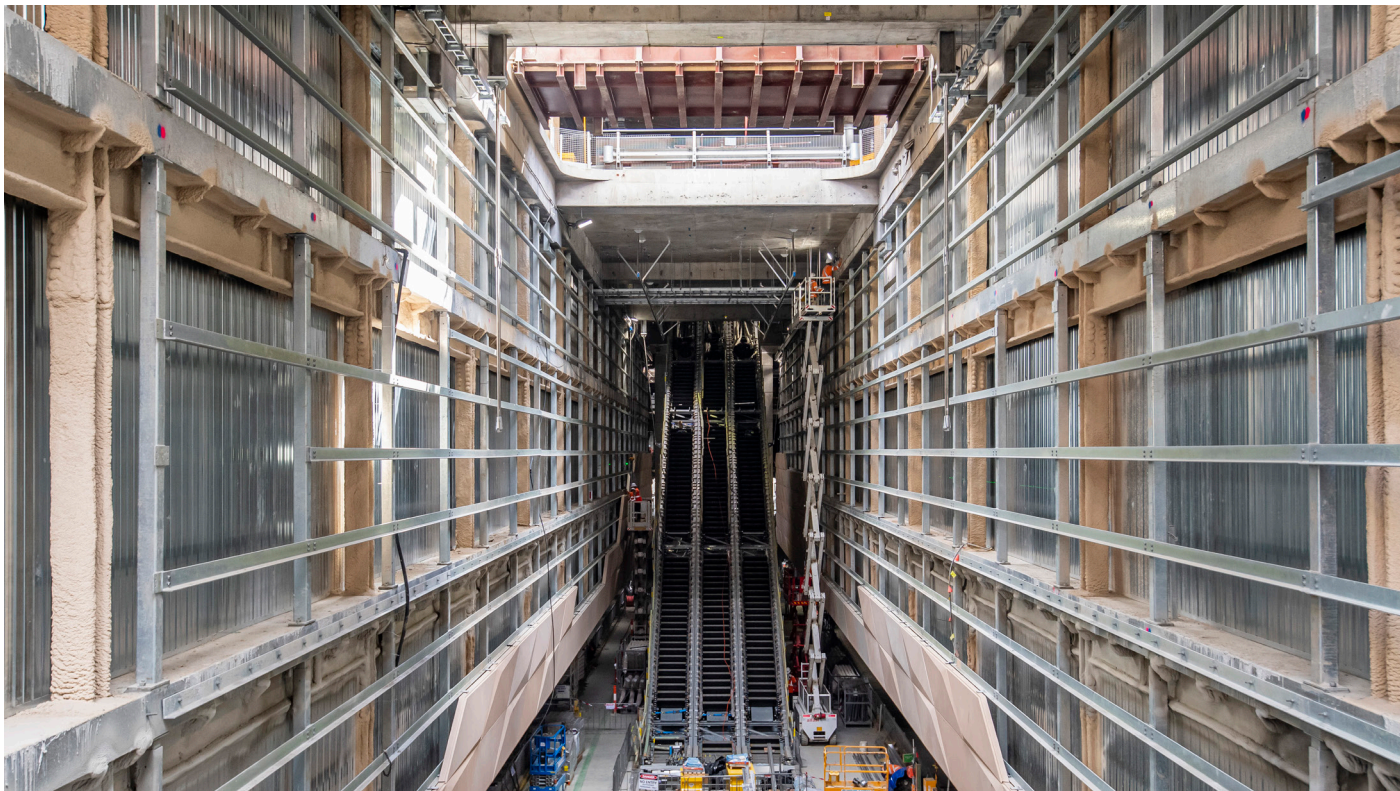
In late December 2021, the canopy over Platforms 12-13 was installed, as well as about half of the canopy over Platform 14. In late April 2022, the final portion of the Platform 14 canopy will be installed. Fit out of the canopies with services and finishes is now underway.

As for the platforms underneath the canopies, Platforms 12-13 were built in late December 2021 (the surface of Platform 12 was demolished and then reinstated with Platform 13), and Platform 14 is scheduled to be constructed in February 2022.

Sydney Metro is Australia's biggest public transport project. Services started in May 2019 in the city's North West with a train every four minutes in the peak. Metro rail will be extended into the CBD and beyond to Bankstown in 2024. There will be new CBD metro railway stations at Martin Place, Pitt Street and Barangaroo and new metro platforms at Central.

In 2024, Sydney will have 31 metro railway stations and a 66 km standalone metro railway system – the biggest urban rail project in Australian history. There will be ultimate capacity for a metro train every two minutes in each direction under the Sydney city centre.

Laing O'Rourke is delivering the new Sydney Metro platforms under Central Station as well as the landmark Central Walk – a new underground pedestrian concourse to help customers get around Sydney's busiest railway station.



New escalators installed in the metro box.

Progress in the metro box

Since completing excavation in the metro box, there has been significant progress to prepare the site for the new metro platforms. The precast concrete sections that form the metro platforms have been installed, and the basement structures which house important services are complete, with installation of these services now underway. The exterior of the basement structures has been clad in Glass (fibre) Reinforced Cement (GRC) panels. These panels were fabricated off-site, and then bolted onto a galvanised structural steel frame.

The major parts of the escalators and lifts have been installed, and the finishes are underway.

While the work for services and finishes continues, the track area is now being fitted out with the infrastructure for running the driverless trains, including the all-important tracks.

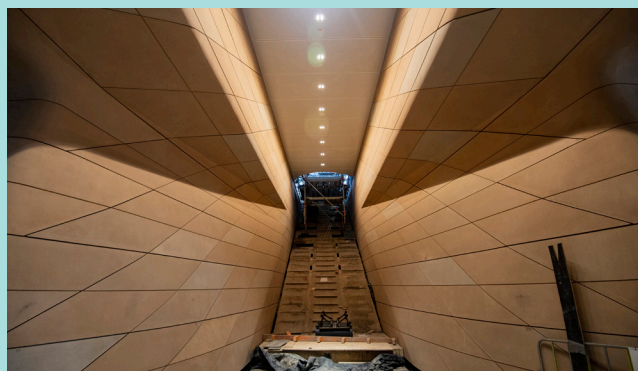


Workers installing GRC cladding.

Moving forward in Central Walk

Several milestones for Central Walk, the new 80-metre-long concourse underneath Platforms 16-23, have been achieved recently. Of these milestones, one of the most impressive is the completion of the main excavation. After two years of planning and preparation works, this feat was accomplished in about 12 months underneath live rail. The excavation was staged in portions so that appropriate supports could be positioned during the work to ensure the safety of passengers and trains above.

In addition, installation of the southern escalators to Platforms 16-23 from Central Walk was completed in November 2021, while the northern set of escalators to the platforms is now underway. The four new lifts that will allow a smooth transition between Central Walk



The location of an escalator leading from Central Walk to a suburban platform.

and Platforms 16-23 are currently being installed.

Fit-out is truly underway in Central Walk as well, with more than half of the 786 GRC panels already installed.

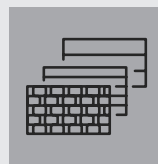


Three-month lookahead

Activity (subject to change)		January	February	March
1	Station fitout within the metro site	●	●	●
2	Building the structure for the new Chalmers Street entrance	●	●	●
3	Northern escalators, lifts and surface installation work within hoardings on Platforms 16-23 and within Central Walk underneath	●	●	●
4	Detailed excavation in Central Walk	●	●	●
5	Services installation in Randle Lane	●	●	
6	Reinstatement of canopies, platforms and tracks 13 and 14		●	●
7	Tiling on Platforms 0-1		●	
8	Services installation in the Eastern Suburbs Railway Concourse and Ghost Platforms	●	●	
9	Services and bulkhead installation	●	●	
10	Tiling Platform 12			●
11	Services and finishes works on the upper and lower Northern Concourse	●	●	●



67,000 tonnes of concrete poured in the metro box



3,500 Glass (fibre) Reinforced Cement cladding panels are being installed across the project

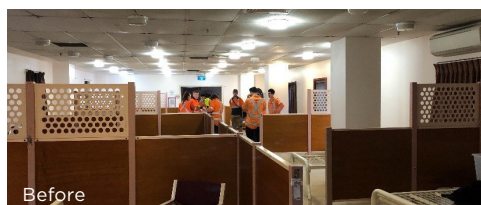


Volunteers from Central Station Metro.

Many hands make light work

The team at Central Station Metro (CSM) has a strong commitment to supporting local charities and not-for-profit initiative Movember. In the last quarter of 2021, the easing of lock-down restrictions provided an opportune time for CSM to support two local charities.

Volunteers headed to Foster House (the Salvation Army shelter for homeless men in Surry Hills) to transform a room into an entertainment area. This work continues CSM's tradition of helping out at Foster House, where volunteers have been involved since 2019.



The bright blue feature paint and grey undertones were donated by Dulux and gave the previously cream walls a big lift.

The Salvation Army's Foster House provides accommodation for around 126 homeless men each night, as well as medical services, case management, counselling, and recreational activities.

In the lead up to Christmas, our team also raised over \$26,000 for Movember, and supported the Women's and Girls Emergency Centre (WAGEC) at Redfern with a Christmas gift drive.


In addition, during 2021, the CSM team raised awareness and provided blood and plasma donations. In total, the team made over 65 donations, which supported more than 195 people who needed it.

Want to stay in touch?

 **1800 171 386** Community information line open 24 hours

 **sydneymetro@transport.nsw.gov.au**

 **Sydney Metro City & Southwest**, PO Box K659, Haymarket NSW 1240

 If you need an interpreter, contact TIS National on **131 450** and ask them to call **1800 171 386**