

Removal of Parking – South and West Terrace

8 November 2021 – 30 June 2022

Sydney Metro is Australia's biggest public transport project.

Services started in May 2019 in the city's North West with a train every four minutes in the peak. Metro rail will be extended into the CBD and beyond to Bankstown in 2024. There will be new CBD metro railway stations underground at Martin Place, Pitt Street and Barangaroo and new metro platforms at Central.

In 2024, Sydney will have 31 metro railway stations and a 66 km standalone metro railway system – the biggest urban rail project in Australian history. There will be ultimate capacity for a metro train every two minutes in each direction under the Sydney city centre. The upgrade of the T3 Bankstown Line to metro standards between Sydenham and Bankstown received planning approval on 19 December 2018.

In October 2021, a \$45 million contract was awarded to a joint venture of John Holland and Laing O'Rourke to start early works construction of the new Bankstown Station. Construction work will begin immediately to deliver a new services building, install new Sydney Metro rail systems and communication equipment and convert current Sydney Trains equipment to metro standards.

Construction activities to install the new Metro platform and service building adjacent to Bankstown Railway Station have started and will continue to June 2022. To safely accommodate these activities there will be a partial closure of the northern section of the bus layover bays along South Terrace between **8 November 2021 to 30 June 2022**. During this period temporary bus layover bays will be installed at several locations along South Terrace and West Terrace. All work activities are subject to relevant approvals and will be tailored to the evolving Covid-19 situation at the time. The map on page 2 shows location details.

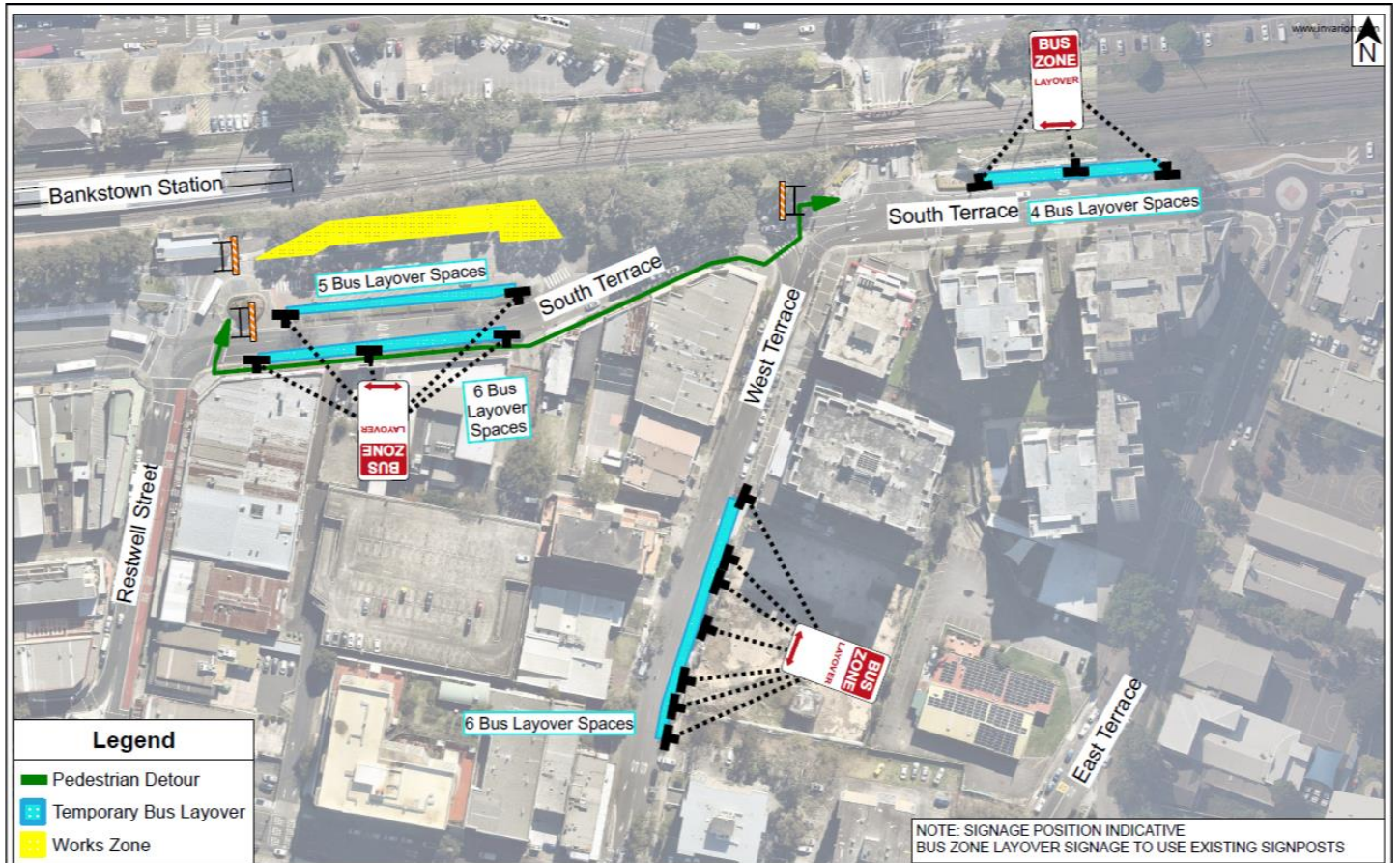
What to expect





- Partial closure of the northern section of the bus layover bays along South Terrace. Please refer to map overleaf
- Parking will be removed on **Monday 8 November 2021** at the following locations to set up temporary bus layover bays:
 - Stopping or parking is not permitted along a bus layover bay
 - Removal of approximately 11 parking spaces along South Terrace between West Terrace and Restwell Street
 - Removal of approximately 4 parking spaces (adjacent to the rail corridor) along South Terrace between West Terrace and East Terrace
 - Removal of approximately 6 parking spaces along West Terrace between South Terrace and Raymond Street
 - Parking spaces will be reinstated and available to the public on **Thursday 30 June 2022**. For alternative parking locations please refer to the Attachment 1.
- Traffic control and directional signage will be in place, where required, for the safety of workers and the community
- There may be an increase in traffic movements around the local area
- Motorists may experience minor delays. Please adhere to the directions of traffic controllers and exercise caution

Keeping you informed

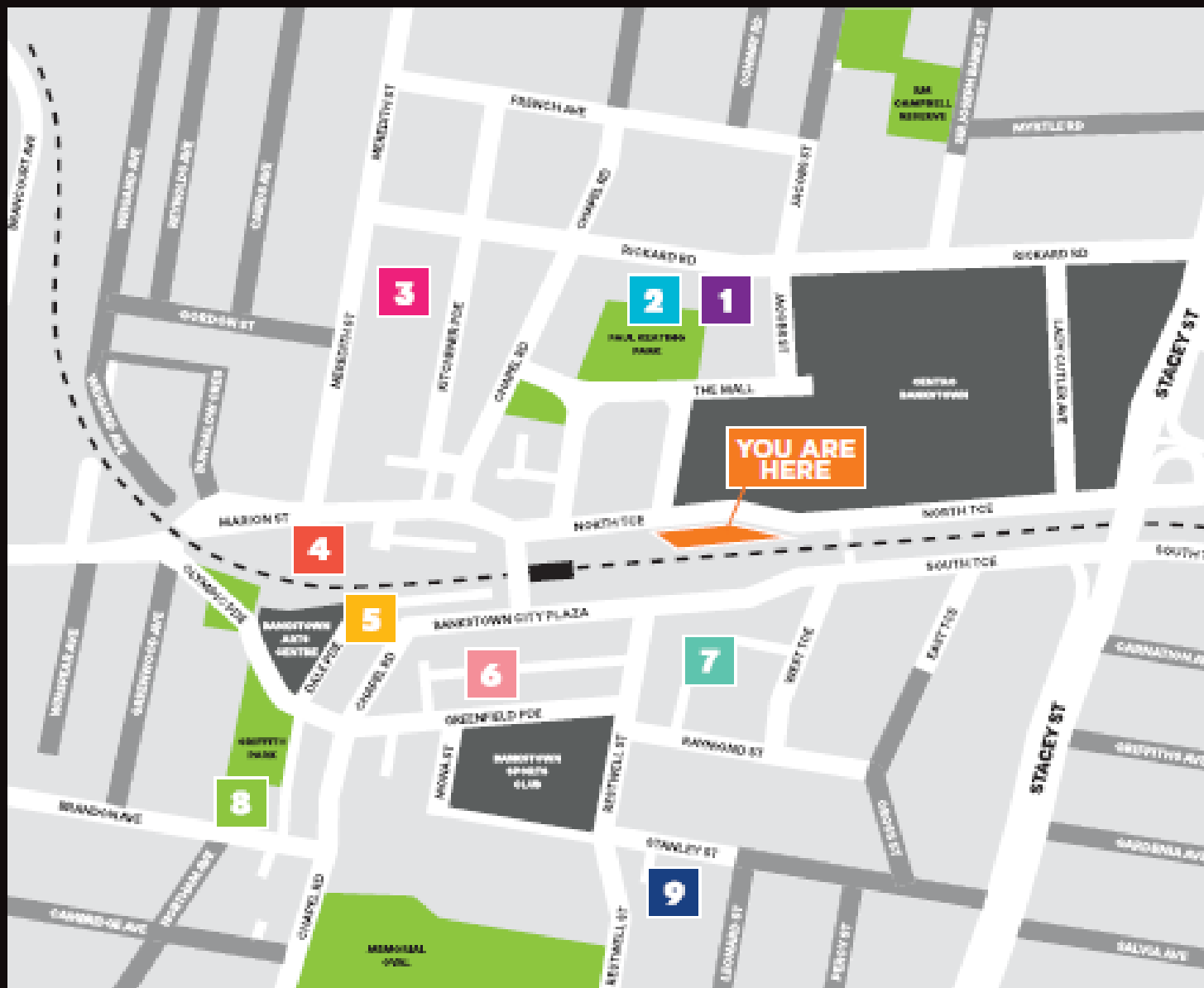
Properties close to the rail corridor will receive notifications when construction work is scheduled to occur. You can contact us on **1800 171 386** (24 hour community information line). If you have questions please ask for **Andie** or email SouthwestMetro@transport.nsw.gov.au.

Thank you for your cooperation while we complete this essential work.



-  **1800 171 386** Community information line open 24 hours
-  southwestmetro@transport.nsw.gov.au
-  Sydney Metro City & Southwest, PO Box K659, Haymarket NSW 1240
-  If you need an interpreter, contact TIS National on **131 450** and ask them to call **1800 171 386**

Alternative Parking Locations



1 City Tower

LEVEL	ALLOCATED TO
P1	Council Members, Councilors and the Executive
P1 (Seating)	Council Employees Private Vehicles
P2 (Seating)	City Tower Tenants
P1 and P2 (Seating)	Leaseback, Pool Cars and Car Allowance Vehicles

All public parking is 4 hours.

2 Outdoor Carpark

LEVEL	TIME LIMIT
Outdoor	2 hours

3 Meredith Street Carpark

LEVEL	TIME LIMIT
1	4 hours
2	Unrestricted
3	Unrestricted
4	Unrestricted

4 Marlon Street Carpark

LEVEL	TIME LIMIT
1	1 hour
2	3 hours
3	Unrestricted
Outdoor	4 hours

5 Dale Lane Carpark

LEVEL	TIME LIMIT
Outdoor	1 hour

6 Greenfield Parade Carpark

LEVEL	TIME LIMIT
1	2 hours
2	2 hours
3	2 hours
4	2 hours
5	2 hours
6	2 hours
7	2 hours
8	Unrestricted
9	Unrestricted

7 West Terrace Carpark

LEVEL	TIME LIMIT
1	3 hours
2	Unrestricted
3	Unrestricted

8 Brandon Avenue Carpark

LEVEL	TIME LIMIT
1	4 hours
2	4 hours
3	4 hours
4	4 hours
5	Unrestricted

9 Stanley Street Carpark

LEVEL	TIME LIMIT
Outdoor	Unrestricted

Streets that are highlighted in grey are unrestricted parking.