



A Sydney Metro stabling and maintenance facility at Rouse Hill.

Clyde stabling and maintenance facility modification report newsletter

November 2021

Have your say

Sydney Metro is Australia's biggest public transport project.

Sydney Metro West will be a new underground metro railway that will double rail capacity between Greater Parramatta and the Sydney CBD, transforming Sydney for generations to come. It is expected to create approximately 10,000 direct and 70,000 indirect jobs during construction.

In March 2021, the Department of Planning, Industry and Environment granted planning approval for the Sydney Metro West project concept between Westmead and the Sydney CBD and for major construction work between Westmead and The Bays. This included a stabling and maintenance facility located in the Clyde and Rosehill industrial estate to stable trains and house facilities associated with running a world-class metro railway.

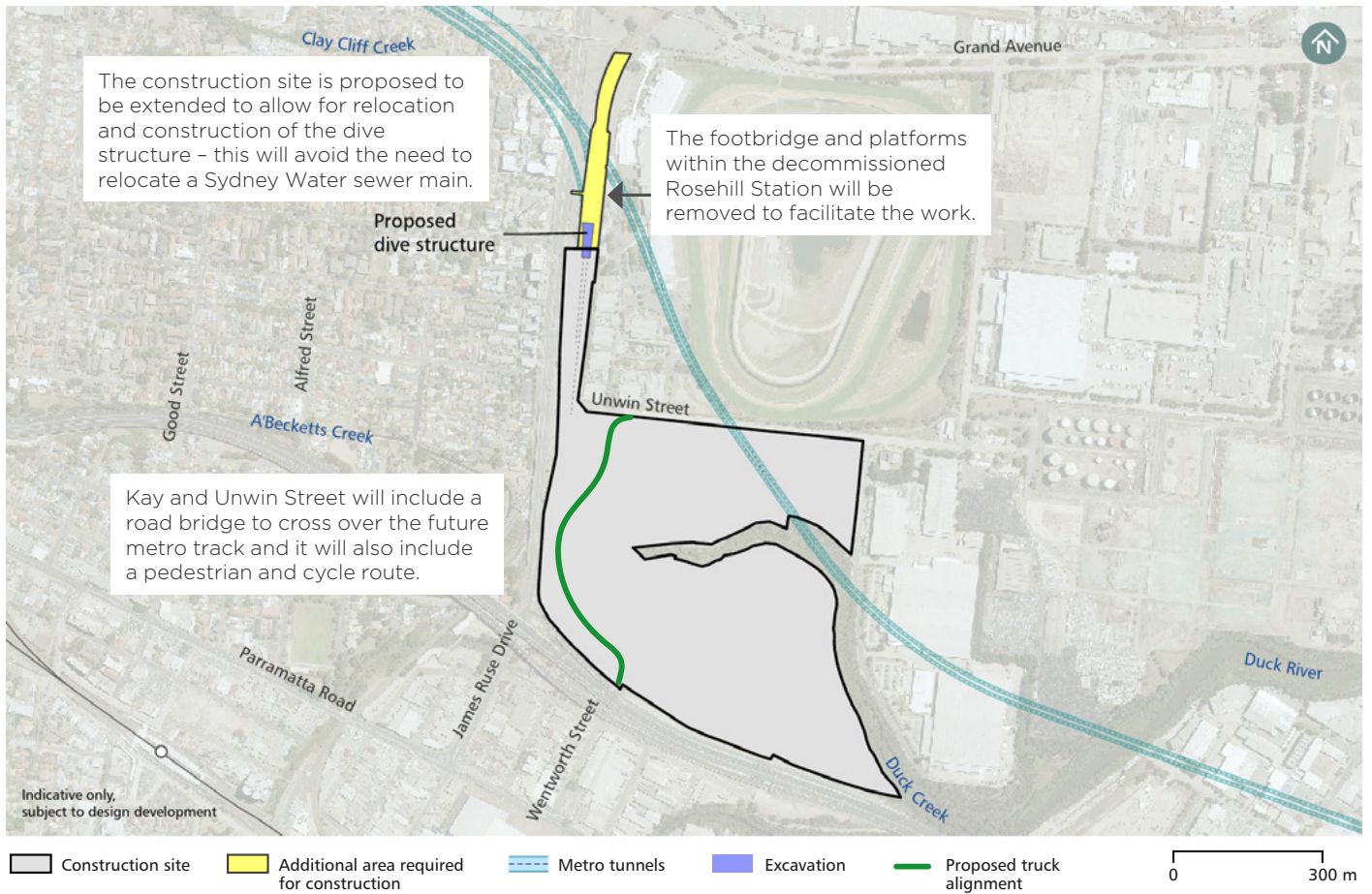
Following a design refinement process, Sydney Metro is proposing to modify the approval for the Clyde stabling and maintenance facility. The proposal involves relocating the tunnel dive structure to the north-east avoiding the need to relocate a major Sydney Water sewer main that services the local area.

The modification also proposes to realign Kay and Unwin streets through the site providing safe and reliable pedestrian and cyclist access. The footbridge and platforms within the decommissioned Rosehill Station would also be removed to facilitate the work. The modification report is now on exhibition and it's time to have your say.

Have your say

'Clyde stabling and maintenance facility modification to Sydney Metro West - Westmead to The Bays and Sydney CBD' is on public exhibition until **8 December 2021**. Anyone may make a submission, in any language. The Department of Planning, Industry and Environment will then collate submissions and publish them on their website. The issues raised in the submissions will be considered before the project is assessed and a determination is made. **Your submission must reach The Department by 8 December 2021.**

Clyde stabling and maintenance facility proposed modification site map



Details of the proposed modification of the State significant infrastructure approval are now available on sydneymetro.info/metrowest or planningportal.nsw.gov.au/major-projects.

How to make a submission

Online: visit planningportal.nsw.gov.au/major-projects and follow the 'on exhibition' links

Write a letter to: **Planning and Assessment**
Department of Planning, Industry and Environment
Locked Bag 5022
Parramatta NSW 2124

Your letter must include:

1. Your name and address, at the top of the letter only (or in a separate cover letter if you want your personal details to be withheld from publication)
2. The name of the application and the application number (SSI-10038)
3. A statement on whether you support or object to the proposal
4. The reasons why you support or object to the proposal
5. A declaration of any reportable political donations made in the previous two years.

If you have any questions about this process you can contact the NSW Department of Planning, Industry and Environment.

Call: **1300 305 695**

Email: majorprojectssupport@planning.nsw.gov.au

The Department may publish any personal information you have included in your submission on a proposal. Do not include any personal information in your submission that you do not want published.

For more information, view the Department's Privacy Statement at: planning.nsw.gov.au/privacy.

Contact us

1800 612 173 Community information line open 24 hours

sydneymetrowest@transport.nsw.gov.au

Sydney Metro West, PO Box K659, Haymarket NSW 1240

If you need an interpreter, contact TIS National on **131 450** and ask them to call **1800 612 173**