


Linking the North West region

Key Learning Area	Unit or lesson title and main focus questions	Most appropriate level and suggested number of lessons
 Geography	Linking the North West region	Stage 4-5
	What are the main businesses in the North West region growth area? What are the advantages of linking these businesses by rail?	1-3 lessons

Teacher briefing

Students investigate the location of the main economic growth areas in the North West region and identify the types of businesses that operate in these areas. They then link these businesses to other growth areas in Sydney. As a result of this activity, students learn about how the Sydney Metro Northwest will improve the economy of the region.

Focus questions:

- Where are the main business growth areas in the North West region of Sydney?
- What are the main types of businesses located in these areas? List their activities
- How are these businesses currently linked to other growth areas in Sydney?
- List the advantages of linking these businesses by rail.

Requirements for these lessons

- Interactive whiteboard
- Computers
- Internet connection
- Bookmarked websites (see web links).

Key terms and vocabulary

Global Economic Arc, Growth Centre, commercial core, business park, light industrial, bulky goods, station precinct, finance sector.

Background information

The North West Rail Link *Environmental Impact Statement*, Executive Summary states that over coming decades, “an extra 200,000 people will move into the North West region, taking the region’s population above 600,000. Sydney Metro Northwest will, for the first time, deliver a reliable heavy rail public transport service to this growing region which has the highest car ownership levels per household in Australia.”

Note: The North West Rail Link is now known as Sydney Metro Northwest.
 For more information visit <https://www.sydneymetro.info/>

Source: Sydney Metro Northwest *Environmental Impact Statement 2*, Executive Summary.

How do metropolitan areas like Sydney plan for the type of growth detailed in the Sydney Metro Northwest *Environmental Impact Statement 2*? There are several planning models used internationally; however, the one used in Australia – ‘growth-centre theory’ – remains one of the more widespread and successful. According to this model, the city selects specific areas to be the focus for jobs and housing. These areas then become ‘magnets’ for economic activity and are linked to other growth areas so that synergies can be developed. The Sydney Metro Northwest helps provide this vital link.

Web links



Sydney Metro Northwest Corridor Strategy, NSW Department of Planning and Environment

https://www.planning.nsw.gov.au/Plans-for-your-area/Priority-Growth-Areas-and-Precincts/Sydney-Metro-Northwest-Priority-Urban-Renewal-Corridor/~/_/media/3C7B8E2246724F50BC507815AC6169FD.ashx

The draft structure plans for each station precinct can be found at:

<https://www.planning.nsw.gov.au/Plans-for-your-area/Priority-Growth-Areas-and-Precincts/North-West-Growth-Area>

Google Maps

<https://maps.google.com.au>

Syllabus links

Geography K-10

Geography Stage 4 - Interconnections

- the way transportation and information and communication technologies are used to connect people to services, information and people in other places

(GE4-1) locates and describes the diverse features and characteristics of a range of places and environments

(GE4-7) acquires and processes geographical information by selecting and using geographical tools for inquiry

Geography Stage 5 - Changing places

- the management and planning of Australia's urban future

(GE5-5) assesses management strategies for places and environments for their sustainability

(GE5-7) acquires and processes geographical information by selecting and using appropriate and relevant geographical tools for inquiry

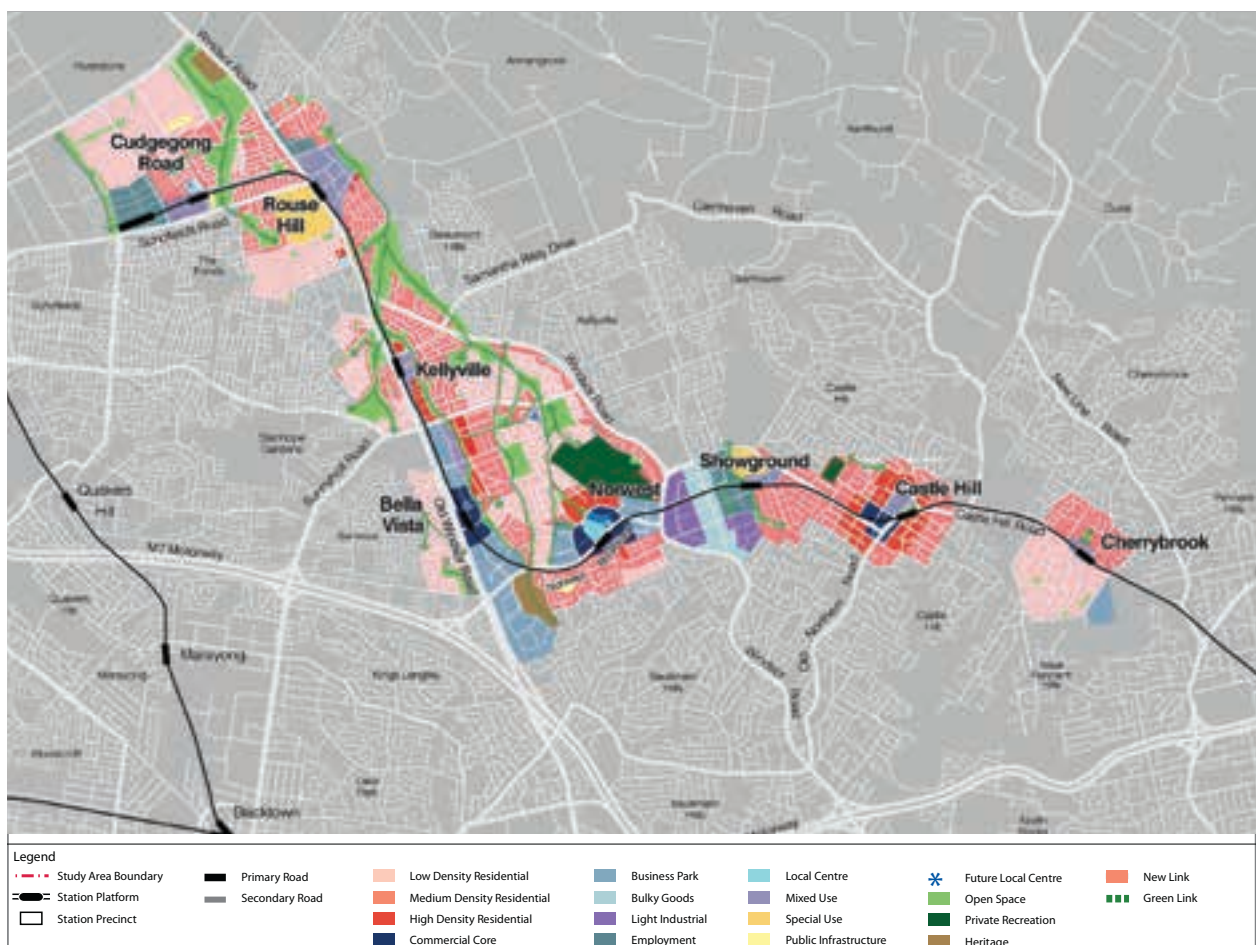


Figure 4: Land use map, Sydney Metro Northwest *Corridor Strategy*, NSW Department of Planning and Environment. This map can be downloaded and printed. It can also be displayed on the interactive whiteboard.

Learning experiences

Step 1 – Identify the main business areas

Students identify the main business areas as shown on the Sydney Metro Northwest *Corridor Strategy* land use map page 13. Business areas are shaded blue and purple. For a detailed examination of the map, it is recommended that students download copies onto their computers, laptops or iPads.

<https://www.planning.nsw.gov.au/-/media/Files/DPE/Reports/north-west-rail-link-corridor-strategy-2013-09.pdf>

Alternatively students can download the individual Finalisation Reports for each of the station precincts and local businesses.

Step 2 – Find the major businesses on Google Maps

Students then use Google Maps to find the business areas they have identified on the Sydney Metro Northwest *Corridor Strategy* land use map.

Using Google's Map View and Street View, students find the names of the major companies that have businesses in these areas.

Step 3 – Identify products and services

Using the internet, students identify services or products these businesses provide and answer the following questions:

- What are the main businesses found in these areas?
- What services or products do they provide?
- Why do you think they are located there?

Step 4 – Explore the Corridor

Use Figure 5 (page 42) to locate other business areas in the Global Economic Corridor. Students should repeat the exercise for the North West region by answering the following questions:

- What businesses are found there?
- Are these types of businesses similar or dissimilar to those found in the North West region?

Step 5 – Discuss why a rail link would bring economic advantages to businesses in the North West region

In groups, students discuss why linking business areas in the North West region would be economically advantageous to the area, and why a rail line may be the best option to achieve this outcome. Groups share their thoughts with the whole class.

- Is there agreement among groups?
- Why or why not?

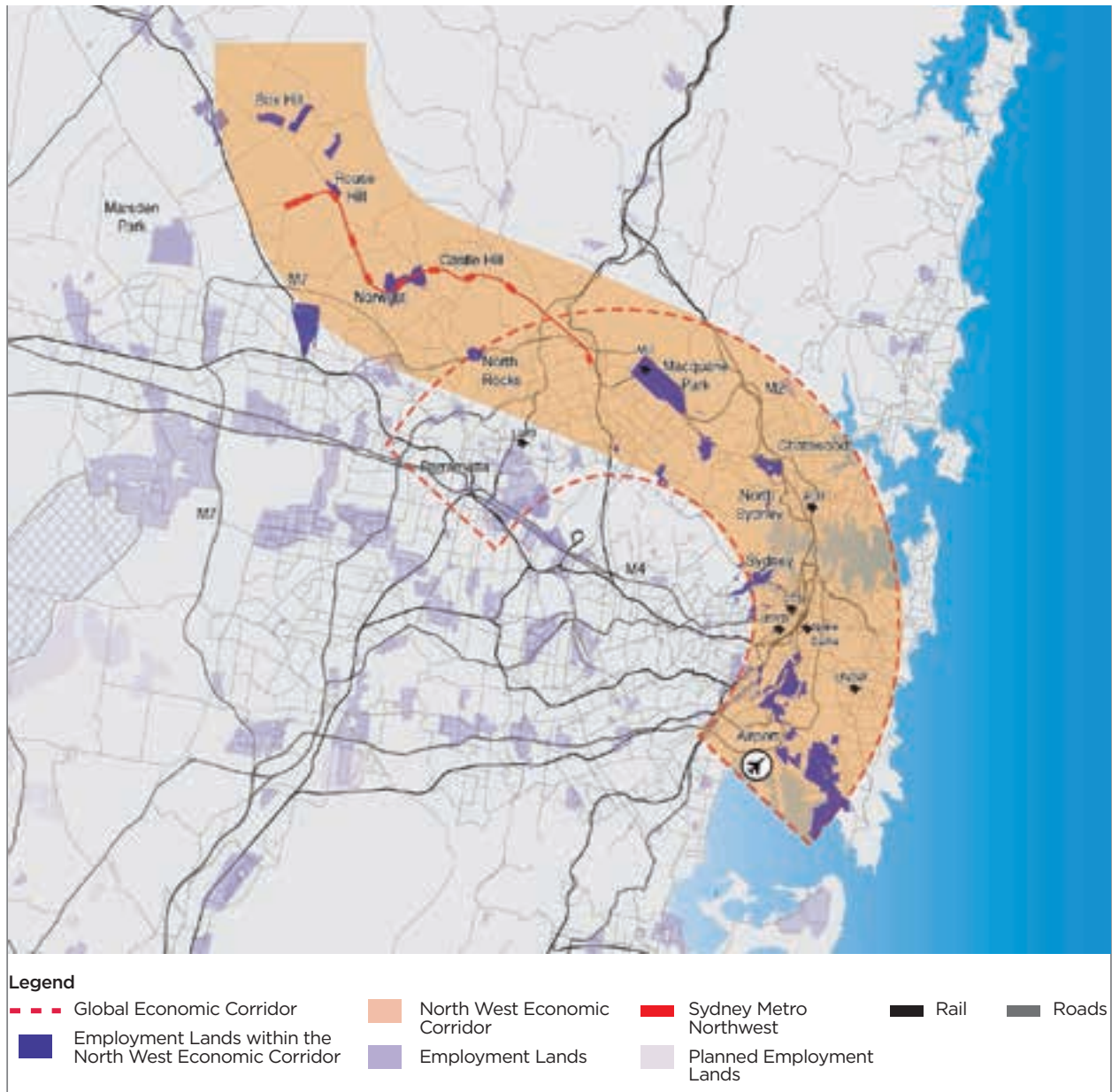


Figure 5: The North West region in the context of the Global Economic Corridor.

Source: Sydney Metro Northwest *Corridor Strategy*, NSW Department of Planning and Environment.

