



Platform structure taking shape in the Victoria Cross Station cavern.

## New contractor at Victoria Cross Station

**Major work to build the new Victoria Cross Station has started, with construction work transforming the site.**

In January 2021, Lendlease commenced onsite construction work for the Victoria Cross integrated station development. During this time, the project team has completed site establishment work including mobilising equipment to the sites, implementing various safety controls such as traffic and pedestrian management and installing overhead protective hoardings around the sites to ensure safe access for pedestrians.

Lendlease will construct the station interior and the northern and southern station entrance buildings, in time for the opening of Sydney Metro City & Southwest in 2024. This work continues on from the tunnelling and excavation work completed by John Holland CPB Ghella (JHCPBG).

Sydney Metro is Australia's biggest public transport project. Services started in May 2019 in the city's North West with a train every four minutes in the peak.

Metro rail will be extended into the CBD and beyond to Bankstown in 2024. There will be new CBD metro railway stations at Martin Place, Pitt Street and Barangaroo and new metro platforms at Central.

In 2024, Sydney will have 31 metro railway stations and a 66-kilometre standalone metro railway system. There will be ultimate capacity for a metro train every two minutes in each direction under the Sydney city centre.



## Station cavern taking shape

Since the arrival of Lendlease, there has been great advancement at both north and south sites. In addition to this, the underground cavern has had a significant transformation.

Major progress has been made on completing concrete structural works for the plant and services areas at both ends of the platform and on the central mezzanine. This will allow access to the platform from the southern concourse and pedestrian tunnels. The platform has also made significant progress with precast concrete sections being loaded into the cavern and placed in their final position. High level services are underway, allowing the ceiling finishes to commence.

The upcoming months will see completion of platform installation, steel installation and further ceiling work.



Above: waterproofing in the Victoria Cross South site. Bottom left: station platform structure in the Victoria Cross Station cavern. Bottom right: Victoria Cross North site shaft.



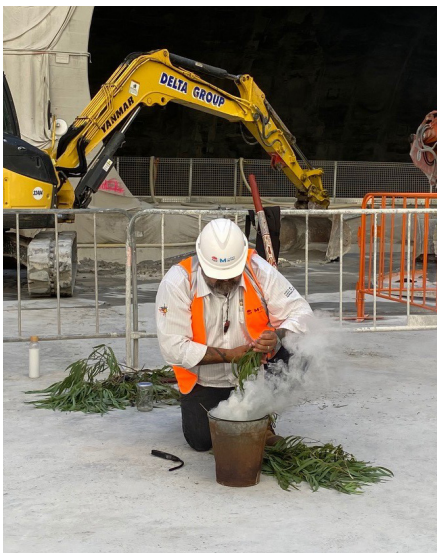
## Welcome to Country for our site opening

The integrated station development team celebrated the commencement of construction with a Welcome to Country and smoking ceremony at the Victoria Cross Station site.

Over 50 employees participated in a traditional Aboriginal smoking ceremony conducted by Uncle Brendan Kerin from the Metropolitan Local Aboriginal Land Council. He shared personal stories of his childhood and experiences as an Aboriginal child growing up in the 1970s and then played a traditional song.

The team were then invited to connect to country during the smoking ceremony by washing in the smoke to bring each person a safe and positive connection with the area.

Ashes from the smoking ceremony were buried onsite and some will be used for future project smoking ceremonies.



Uncle Brendan Kerin preparing traditional smoking ceremony and sharing personal stories with the project team.



## Reaching new heights

Four tower cranes will be used during the construction of Victoria Cross Station. One will be on the north site, and the other three will be at the south site. The cranes will allow materials to be efficiently and safely lifted in and around the construction site.

Each crane at the south site will service different parts of the build. One will service the station and the office building above. The second will service the carpark and the new retail area. Meanwhile, the third is an internal tower crane, which will climb up as the office building rises.

The one crane at the North site will service the station cavern and station building.

## Name the Crane competition

Running for more than a decade on Lendlease projects across Australia, the Name the Crane competition invites school aged children to participate in the naming the tower cranes being used across different projects.

At the end of the second school term of 2021, students from Shore Preparatory School, St Aloysius' College Junior School, St Mary's Catholic Primary School and Wenona Junior School were asked to submit a suggested name for the tower cranes at Victoria Cross, accompanied by a rationale for their name. The winners of the competition will be announced in term three.

Each winner will have their crane name displayed on the construction site and attend an naming ceremony. Keep an eye out in the next update the winning names.

### Did you know?

Biodiesel is a renewable fuel which produces less greenhouse gas emissions, less hydrocarbon emissions and less particulate matter than petroleum diesel. In Australia it is made from recycled cooking oil and tallow. Victoria Cross is using a B5 biodiesel blend in plant and equipment. This means that 5% of the diesel used is biodiesel, resulting in a greenhouse gas emissions reduction of roughly 2110kg of CO2 to date.

### Have you noticed?

The five temporary solar lights along Miller Street have been allowing us to capture the sun's energy during the day to illuminate the street at night, saving roughly 300 kg of greenhouse gas emissions to date.



North site crane delivery.

### North site tower crane facts

- The north crane reaches 50m in all directions.
- The north crane has the capacity to lift 32 tonnes (more than five African Elephants).

## Community Day supports youth crisis accommodation

The Victoria Cross integrated station project team has supported the Lendlease Future Steps' partner and not for profit Taldumande Youth Services by repainting one home and renovating the garden of another to improve the accommodation for youth at risk of homelessness.

Taldumande Youth Services supports vulnerable young people aged 12 to 21 years by providing a pathway, from homelessness to independence.

"We cannot thank the kind and generous souls from Lendlease enough for the absolutely wonderful paint job they did. The house looks incredible, it has added a whole new brightness, lightness and freshness that has been such a mood-lifter for the kids and the staff here!" said Lisa from the Taldumande Youth Services.



The Victoria Cross integrated station project team at the community day.

## Tunnel fitout work on track

Track construction in the twin tunnels to the north and south of Victoria Cross Station is nearing completion. More than seven kilometres of track has been laid between Crows Nest and Barangaroo using more than 10,000 sleepers.

The sleepers were lowered to the floor of the tunnels at Crows Nest and Blues Point, along with the specialised equipment needed to construct the track. Tracks were then laid towards Victoria Cross from each direction, stopping at either side of the station site. This section of track will be laid once the station construction progresses.

Completion of the track between the stations means that the mechanical and electrical fit-out of the twin tunnels needed to operate the driverless metro train system can now proceed using specially equipped trucks and trailers designed to safely move personnel and equipment through the tunnels.

In addition to installation of the track, fit-out of the dual tunnels includes fire mains, walkways, cable trays and brackets supporting many kilometres of high and low power voltage cables and communications wires. This work is scheduled for completion around mid-next year.



Sleepers being delivered for track construction between Victoria Cross and Crows Nest Stations.

## Construction look a head

Activity	September	October	November	December
Hoarding adjustments and graphic installation	●			
Temporary pedestrian changes and diversions	●	●	●	●
Delivering and removing materials, machinery, spoil and equipment	● ●	● ●	● ●	● ●
Excavation materials and rock reinforcement	● ●	● ●	● ●	● ●
Concrete pours including formwork and reinforcement installation	● ●	● ●	● ●	● ●
Crane use	● ●	● ●	● ●	● ●
Station fit out	● ●	● ●	● ●	● ●
Denison Street stormwater upgrade	●	●	●	●

Victoria Cross South site ● Victoria Cross North and cavern sites ●

## Extended work hours





On 25 March, the NSW Government extended the prescribed period for implementing changes to standard working hours, due to COVID-19, until 31 March 2022. This allows construction sites to continue to operate on weekends and public holidays from 7am to 6pm. The extended work hours are part of the NSW Government's efforts to support the State's economic recovery, protect the health and safety of the community and ensure businesses can adapt and respond to changing needs.

Extended hours were implemented at both Victoria Cross sites from Saturday 1 May 2021 until 31 March 2022 from 7am to 6pm on Saturdays and Sundays.

## Want to stay up to date?

Register today for community email updates at [victoriacrossmetro@transport.nsw.gov.au](mailto:victoriacrossmetro@transport.nsw.gov.au)

## Contact us

-  **1800 171 386** Community information line open 24 hours
-  **[sydneymetro@transport.nsw.gov.au](mailto:sydneymetro@transport.nsw.gov.au)**
-  **Sydney Metro City & Southwest**, PO Box K659, Haymarket NSW 1240
-  If you need an interpreter, contact TIS National on **131 450** and ask them to call **1800 171 386**