

Notification – St Marys

28 July 2020

Sydney Metro is Australia's biggest public transport project

Sydney Metro – Western Sydney Airport is the new metro railway line which will service Greater Western Sydney and the new Western Sydney International (Nancy-Bird Walton) Airport.

The railway will service the new airport and airport business park, the Western Sydney Aerotropolis, Luddenham, Orchard Hills and St Marys – here customers can connect to the existing Sydney Trains suburban T1 Western Line. The NSW and Australian governments have a shared objective of having Sydney Metro - Western Sydney Airport operational when the airport opens for passenger services.

World-class metro rail means better access to more places, faster travel times, less congestion on roads and a reduced reliance on cars. Metro services now connect the city's North West between Rouse Hill and Chatswood and will be extended into the Sydney CBD and beyond to Bankstown in 2024. Construction on Sydney Metro West will start later this year – the project will connect Greater Parramatta with the Sydney CBD, linking communities to rail services along the way.

Site survey – St Marys

Non-intrusive utility location and survey work will be undertaken in local streets around St Marys, near your area, to assist with planning and design for the Sydney Metro – Western Sydney Airport project. See map overleaf.

Work is expected to commence on **Tuesday 4 August 2020** and continue for up to **five weeks** (weather and site conditions permitting).

Work will include:

- Visual inspection of utility covers
- Tracing of underground services and surveying using hand held instruments, utility detection equipment and tripod mounted equipment.

What to expect:

- Noise from these activities is expected to be minimal
- Access to pathways and buildings will be maintained at all times
- Minor traffic disruptions
- Bus services will not be affected by these works.

Work will be completed during standard construction hours 7am to 6pm Monday to Friday and 8am to 1pm Saturday. If work is required outside these hours, notification will be provided in advance.

Sydney Metro will continue to undertake work across its projects in accordance with current Government COVID-19 advice, implementing physical distancing, travel and hygiene measures to protect employees and the community.

 **1800 717 703** Community information line open 24 hours

 **sydneymetrowsa@transport.nsw.gov.au**

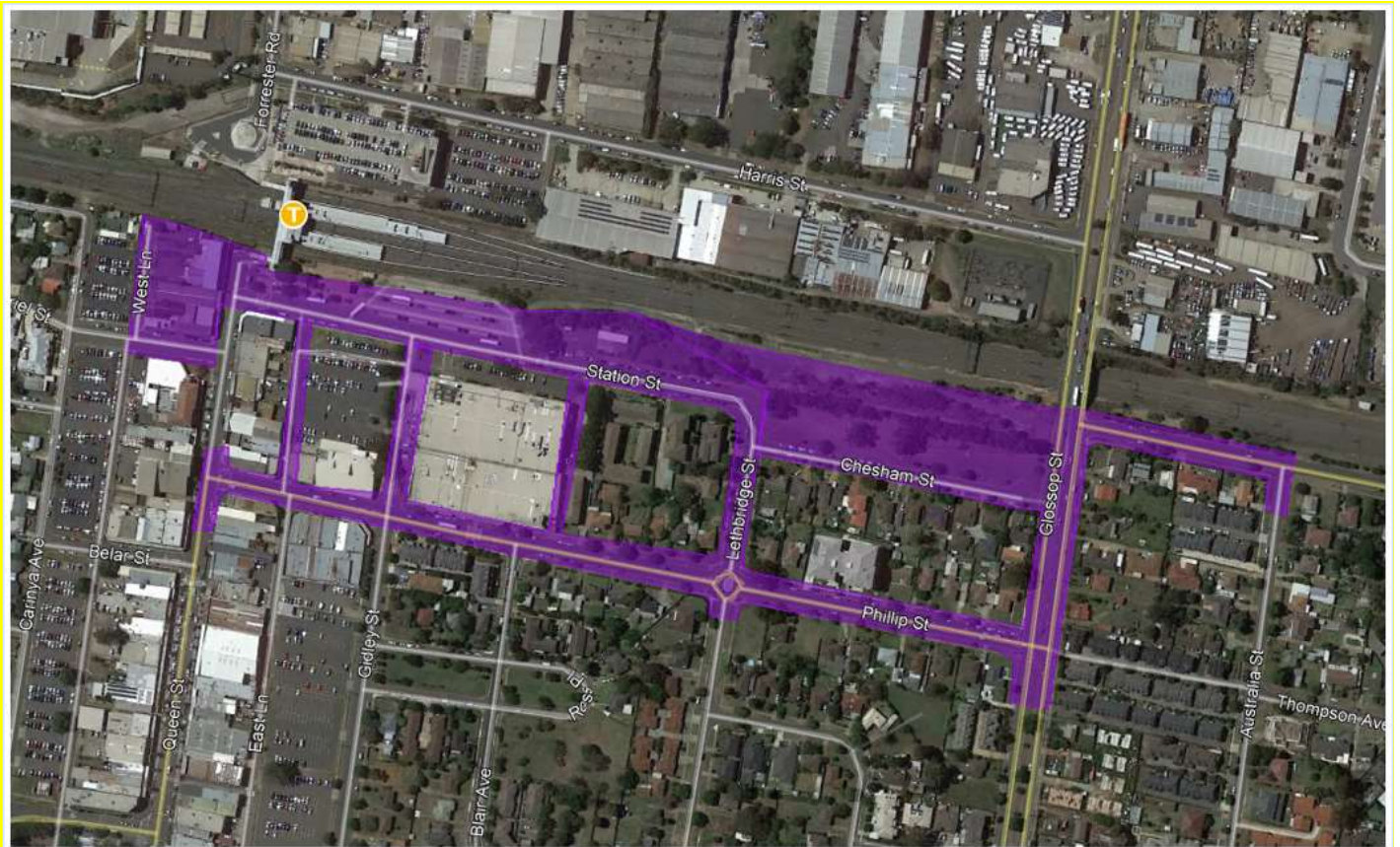
 Sydney Metro – Western Sydney Airport, PO Box K659, Haymarket NSW 1240

 If you need an interpreter, contact TIS National on **131 450** and ask them to call **1800 171 386**

Thank you for your cooperation while we complete this essential work.

If you require further information, please contact Sydney Metro – Western Sydney Airport on 1800 717 703 or email sydneymetrowsa@transport.nsw.gov.au

Investigation work areas – St Marys



 **Work area**

Note: Diagram not to scale,
indicative only and subject to change