



City & Southwest

Martin Place Community and Business Forum

Macquarie Group is delivering the new Sydney Metro Martin Place integrated station development and has appointed Lendlease as its design and construction contractor.

Systems Connect (an unincorporated joint venture between CPB Contractors and UGL Limited) is delivering the Line-wide works to turn the excavated tunnels into a working railway between Chatswood and Sydenham.

You are invited to meet the Lendlease, Macquarie and Systems Connect community teams, who can answer your questions and provide you with a construction update over a free coffee and cake.

Please RSVP [here](#) by Tuesday 15 November 2022.

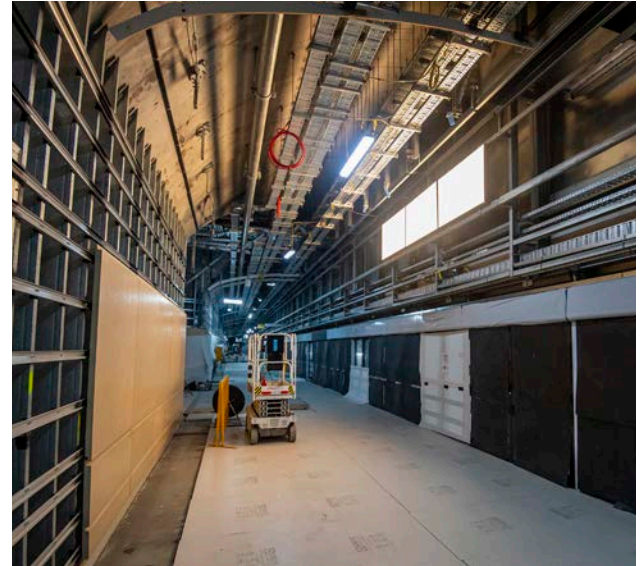
Where: The Naked Duck Cafe, 9 Castlereagh Street, Sydney

When: Thursday 17 November 2022

Time: Drop-in anytime between 2pm and 4pm



Artist's impression of Martin Place looking West from Elizabeth Street.



Work taking place on the new Martin Place metro station platform.

Contact us



1800 171 386 Community information line open 24 hours



martinplacemetro@transport.nsw.gov.au



Sydney Metro City & Southwest, PO Box K659, Haymarket NSW 1240



If you need an interpreter, contact TIS National on 131 450 and ask them to call 1800 171 386