

2 January 2017

SYDNEY METRO NORTHWEST – OPERATIONS, TRAINS AND SYSTEMS
Sydney Metro Trains Facility/Cudgegong Road Station
Out-of-hours oversized equipment delivery and/or removal

The \$8.3 billion Sydney Metro Northwest is the first stage of Sydney Metro – Australia's biggest public transport project. The Northwest Rapid Transit Consortium (NRT) is delivering eight new railway stations, 23km of new track, 4,000 commuter parking spaces and Sydney's new generation of safe, reliable and fully automated metro trains. NRT will deliver this critical infrastructure and operate and maintain it for 15 years.

Different types of oversized equipment will be required at various times throughout construction of the Sydney Metro Northwest at the Sydney Metro Trains Facility and Cudgegong Road Station.

From **Monday 9 January**, the delivery and/or removal of oversized equipment to the site will occur intermittently between **Monday and Friday** over the coming months.

Due to Roads and Maritime Services restriction on the movement of oversized vehicles, delivery and/or removal will take place out-of-hours between **6pm** and **7am** in order to minimise impact on the road network.

Trucks will enter the construction site through either gates located on Tallawong Road, via Schofields Road and/or Cudgegong Road. (See map overleaf)

The trucks will be parked onsite before being loaded or unloaded during normal construction hours (**7am-6pm**) with the assistance of traffic controllers. You may hear noises from heavy vehicle movements. We will endeavour to keep the noise generated by non-tonal reversing beepers to a minimum.

Equipment being delivered and/or removed:

- Oversized steel and machinery

What to expect:

- Construction vehicle movements including non-tonal reversing beepers
- Temporary lighting
- Flashing vehicle lights.

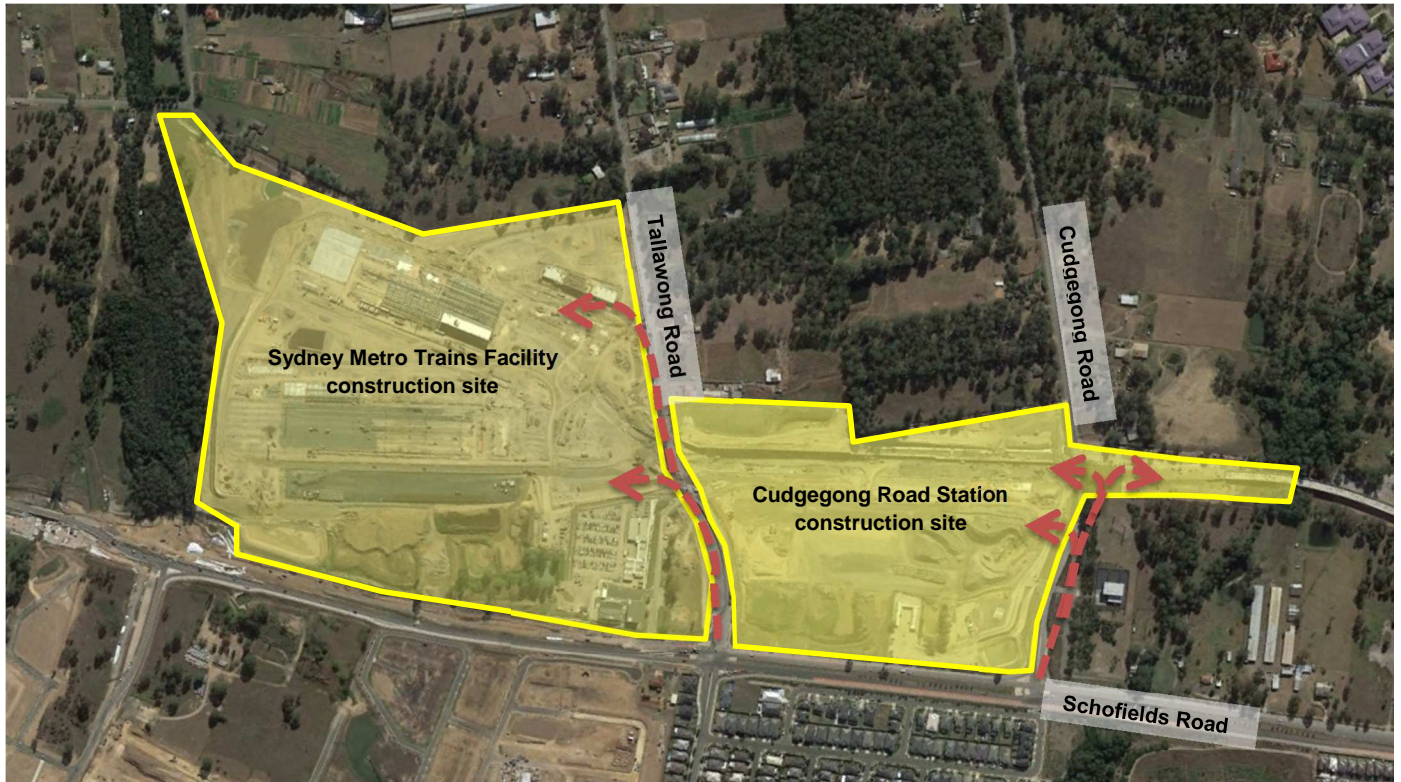
What we will do to minimise impacts:

- Postpone the loading or unloading of equipment until normal construction hours
- Minimise the need for vehicles to reverse
- Position lighting to face away from residential properties.

To make a complaint, register for email updates or for more information phone **1800 019 989** (operating 24 hours a day, 7 days a week), email us at trains@metronorthwest.com.au, or visit www.sydneymetro.info.

Thank you for your patience and cooperation while we carry out this important work.

Sydney Metro Trains Facility and Cudgegong Road Station construction sites



ABOUT THE PROJECT

- The Sydney Metro Northwest will be delivered as part of Sydney's Rail Future — a customer-focused plan to modernise our trains. Over the coming decades, an extra 200,000 people will move into the region, taking its population above 600,000.
- New automated single deck trains will deliver a fast, safe and reliable service.
- There will be no need for a timetable - customers will just turn up and go, with a train every four minutes in the peak.
- The project includes 15km of tunnels between Bella Vista and Epping, a 4km skytrain viaduct section and the conversion of the existing Epping to Chatswood rail link to the new metro system.

ABOUT THE OPERATIONS, TRAINS AND SYSTEMS WORKS

- Northwest Rapid Transit (NRT) is delivering eight new railway stations, 4,000 commuter parking spaces and Sydney's new generation of metro trains and will operate and maintain the Sydney Metro Northwest
- The works will include:
 - Building eight new railway stations and 4,000 commuter car parking spaces
 - Delivering Sydney's new generation of metro trains
 - Building and operating the stabling and maintenance facility
 - Installing 23 kms of new track and rail systems
 - Converting the existing 13 km Epping and Chatswood line to metro status
 - The operation and maintenance of the Sydney Metro Northwest

Translating and Interpreting Services

If you need an interpreter, please call the Translating and Interpreting Service (TIS National) on 131 450 and ask them to call the Sydney Metro Northwest information line on 1800 019 989.

Korean

통역사가 필요하시면 통번역 서비스 (TIS National)에 131 450으로 연락하신 후 이들에게 Sydney Metro Northwest 프로젝트 정보 라인 1800 019 989 로 전화하도록 요청하십시오.

Mandarin

如您需要传译员, 请拨打全国翻译服务(TIS National)号码 131 450, 并要求他们致电西北铁路工程信息热线: 1800 019 989.

Cantonese

如您需要傳譯員, 請致電全國翻譯服務(TIS National), 號碼 131 450, 並要求他們致電西北鐵路工程資訊熱線: 1800 019 989.