

24 October 2016

## **SYDNEY METRO NORTHWEST – OPERATIONS, TRAINS AND SYSTEMS**

### **Kellyville pedestrian footbridge – Design investigations including out-of-hours work**

The \$8.3 billion Sydney Metro Northwest is the first stage of Sydney Metro – Australia's biggest public transport project. The Northwest Rapid Transit Consortium (NRT) is delivering eight new railway stations, 23km of new track, 4,000 commuter parking spaces and Sydney's new generation of safe, reliable and fully automated metro trains. NRT will deliver this critical infrastructure and operate and maintain it for 15 years.

As part of construction for the future Kellyville Station pedestrian footbridge, design investigations are required to provide essential data and information to assist with planning. (See location map and program overleaf).

On **Wednesday 2 and Thursday 3 November 2016**, NRT will undertake out-of-hours work as part of these investigations including identifying ground conditions on Old Windsor Road. This work will be undertaken between **9pm** and **5am**. During this work, temporary lane closures on Old Windsor Road will be required for excavation and restoration before the lane is re-opened to traffic.

Due to Road and Maritime Services restrictions, this work must be undertaken out-of-hours to minimise impacts to the road network and wider community.

On **Monday 31 October, Tuesday 1 November and Friday 4 November 2016**, work will be undertaken between **10am** and **3pm** to understand the ground conditions at the corner of Old Windsor Road / Newbury Avenue and near the Riley T-Way. During this work the footpath will be excavated before being reinstated. Pedestrian detours will be in place during this work.

In the event of wet weather, machinery breakdown or other unforeseen circumstances, work will continue on the next available night/s and/or day/s.

#### **What to expect during night works:**

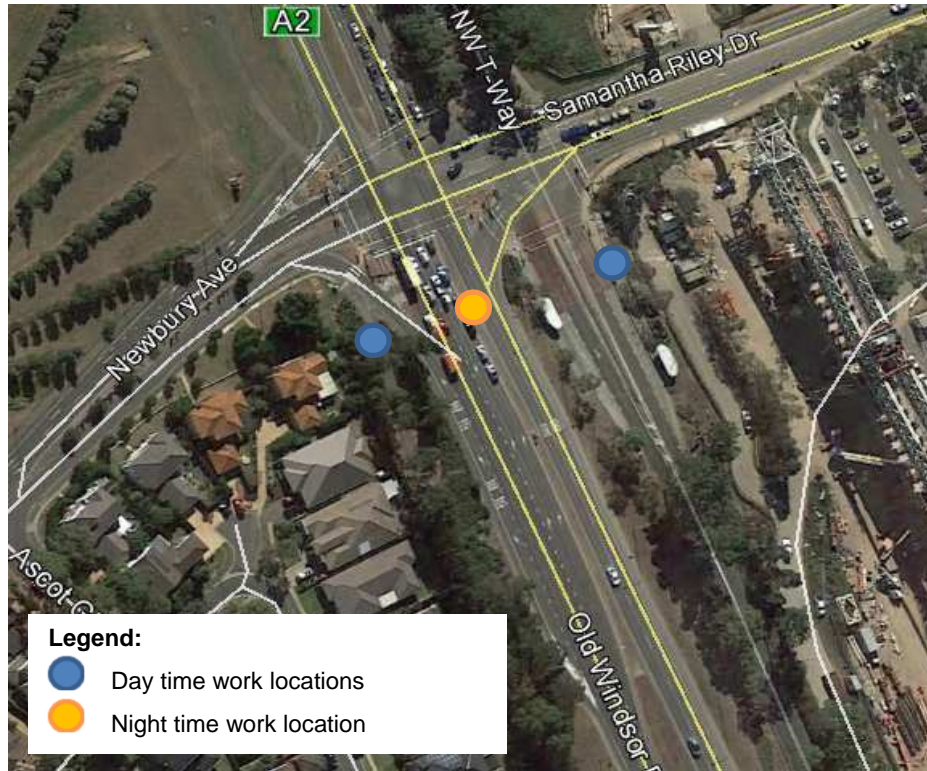
- Temporary lighting, including generators
- Flashing vehicle lights and reversing alarms
- Traffic and pedestrian management including lane closures, reduced speed limits and traffic controllers
- Construction noise from a vacuum truck, saw cutter, bobcat and vibrating roller.

#### **What to expect during day works:**

- Flashing vehicle lights and reversing alarms
- Traffic and pedestrian management including lane closures, reduced speed limits and traffic controllers
- Construction noise from a vacuum truck, saw cutter, bobcat and vibrating roller.

## What we will do to minimise impacts:

- Position lighting to face away from residences
- Minimise the need for reversing construction vehicles
- Start work after the main Higher School Certificate exam period
- Stage work so the noisiest activities are undertaken prior to midnight, where possible.



## Work program:

Monday	Tuesday	Wednesday	Thursday	Friday	Sat/Sun
31 Oct	1 Nov	2 Nov	3 Nov	4 Nov	5 / 6 Nov
		●		●	No works

To make a complaint, register for email updates or for more information phone **1800 019 989** (operating 24 hours a day, 7 days a week), email us at [trains@metronorthwest.com.au](mailto:trains@metronorthwest.com.au), or visit [www.sydneymetro.info](http://www.sydneymetro.info).

Thank you for your patience and cooperation while we carry out this important work.

### ABOUT THE PROJECT

- The Sydney Metro Northwest will be delivered as part of Sydney's Rail Future – a customer-focused plan to modernise our trains. Over the coming decades, an extra 200,000 people will move into the region, taking its population above 600,000.
- New automated single deck trains will deliver a fast, safe and reliable service.
- There will be no need for a timetable – customers will just turn up and go, with a train every four minutes in the peak.
- The project includes 15km of tunnels between Bella Vista and Epping, a 4km skytrain viaduct section and the conversion of the existing Epping to Chatswood rail link to the new metro system.

### ABOUT THE OPERATIONS, TRAINS AND SYSTEMS WORKS

- Northwest Rapid Transit (NRT) is delivering eight new railway stations, 4,000 commuter parking spaces and Sydney's new generation of metro trains and will operate and maintain the Sydney Metro Northwest
- The works will include:
  - Building eight new railway stations and 4,000 commuter car parking spaces
  - Delivering Sydney's new generation of metro trains
  - Building and operating the stabling and maintenance facility
  - Installing 23 kms of new track and rail systems
  - Converting the existing 13 km Epping and Chatswood line to metro status
  - The operation and maintenance of the Sydney Metro Northwest

## Translating and Interpreting Services

If you need an interpreter, please call the Translating and Interpreting Service (TIS National) on 131 450 and ask them to call the Sydney Metro Northwest information line on 1800 019 989.

### Korean

통역사가 필요하시면 통번역 서비스 (TIS National)에 131 450으로 연락하신 후 이들에게 Sydney Metro Northwest 프로젝트 정보 라인 1800 019 989 로전화하도록 요청하십시오.

### Mandarin

如您需要传译员, 请拨打全国翻译服务(TIS National) 号码 131 450, 并要求他们致电西北铁路工程信息热线: 1800 019 989.

### Cantonese

如您需要傳譯員, 請致電全國翻譯服務(TIS National), 號碼 131 450, 並要求他們致電西北鐵路工程資訊熱線: 1800 019 989.