

Project update

April 2021

Sydney Metro is Australia's biggest public transport project.

Services started in May 2019 in the city's North West with a train every four minutes in the peak. Metro rail will be extended into the CBD and beyond to Bankstown in 2024. There will be new CBD metro railway stations at Martin Place, Pitt Street and Barangaroo and new metro platforms at Central.

In 2024, Sydney will have 31 metro railway stations and a 66 kilometre standalone metro railway system. There will be ultimate capacity for a metro train every two minutes in each direction under the Sydney city centre.

Macquarie Group is delivering the new Sydney Metro Martin Place integrated station development and has appointed Lendlease as its design and construction contractor.

Systems Connect (an unincorporated joint venture between CPB Contractors and UGL Limited) is delivering line-wide work which includes installing metro rail track, power systems, communications, signalling systems and infrastructure to turn the excavated tunnels into a working railway between Chatswood and Sydenham.

Upcoming work – Martin Place Station

At the Martin Place North site, waterproofing, shotcreting, perimeter wall and suspended slab construction continues as part of the permanent structure for the integrated station development. Internal hoarding modifications, including relocation of site access and removal of site sheds will be required. The building's core continues to come together. The load-out platform will be removed throughout April to allow construction to progress. Concrete breaking will also take place in the underground adits out of hours between 6pm to 6am during the month of April.

At the Martin Place South site hoarding graphics installation and temporary site shed accommodation installation continues on Elizabeth and Castlereagh streets. Waterproofing continues and concrete pours for suspended slab and perimeter wall construction has commenced. Tunnelling under 50 Martin Place continues 24-hours a day for the underground pedestrian link.

In the underground adits directly under 50 Martin Place, installation of conduits and concrete pours for the ground slab and structure continue. In the underground caverns directly under Elizabeth and Castlereagh streets structural work including temporary steel structure installation continues. Concrete pumping in the Bligh Street compound also continues.

Utility work and investigations, including cleaning pits, CCTV investigations, and coring of pavement will take place along Elizabeth, Hunter, Castlereagh, Bligh and O'Connell streets. Plant and equipment, machinery, spoil and materials will be delivered and removed from all three sites.

Fit out work inside the tunnels by Systems Connect will continue to take place 24 hours a day, 7 days a week, with access for materials and equipment delivery via the Bligh Street site.

Work hours

Standard work hours have been extended at the Martin Place North, South and Bligh Street sites:

- Martin Place North and Bligh Street sites: Monday to Saturday, 5am to 10pm and Sunday 7am to 6pm
- Martin Place South site: Monday to Saturday, 6am to 10pm and Sunday 7am to 6pm

Location	Work during standard (extended) hours
Bligh Street site, adits and caverns	<ul style="list-style-type: none"> • General construction • Delivering and removing equipment, machinery and materials • Delivering and pumping concrete • Dewatering and ventilation • Waterproofing • Structure works • Temporary steel structure installation • Distributing railway sleepers in the tunnels • Cleaning the tunnels in preparation for sleeper distribution
Martin Place South site	<ul style="list-style-type: none"> • General construction • Delivering and removing equipment, machinery, spoil and materials • Waterproofing • Concrete pouring of building basement structure • Site accommodation installation • 24-hour tunnelling of underground pedestrian link using a road header • Dewatering and ventilation
Martin Place North site	<ul style="list-style-type: none"> • General construction • Delivering and removing equipment, machinery, spoil and materials • Waterproofing • Perimeter wall and suspended slab construction • Hoarding adjustments, including relocation of site access • Building core establishment • Removal of load out platform • Dewatering and ventilation
Location	Out of hours work
Bligh Street site, adits and caverns	<ul style="list-style-type: none"> • Delivering and removing equipment, machinery, spoil and materials • Dewatering and ventilation • Concrete breaking within the adits • Delivering railway sleepers
Martin Place South site	<ul style="list-style-type: none"> • Delivering and removing equipment, machinery, spoil and materials • Hoarding graphic installation on Elizabeth and Castlereagh streets • Site accommodation installation • Utility work and investigations • 24-hour tunnelling of underground pedestrian link using a road header • Dewatering and ventilation
Martin Place North site	<ul style="list-style-type: none"> • Delivering and removing equipment, machinery, spoil and materials • Utility work and geotechnical investigations, including core holes and trenching • Jumpform deliveries and installation • Waterproofing • Dewatering and ventilation

What to expect

- Some activities will be noisy. The project team will limit these impacts wherever possible.
- Equipment used will include, excavators, road header, jackhammers, concrete pumps, concrete and haulage trucks, cranes, bobcats, forklifts, elevated work platforms, vacuum trucks, street sweepers, saw cutters and hand tools.
- Non-tonal reversing beepers will be used and workers will be instructed to keep noise to a minimum.
- Temporary traffic changes including shoulder and parking lane closures and short-term traffic lane closures may be required.
- Access to buildings and driveways will be maintained at all times.
- Pedestrian footpaths may be closed or narrowed for short periods with diversions in place.
- There will be increased light vehicle and truck movements in and out of sites.
- Traffic control and directional signage will be in place for the safety of workers and the community.
- Temporary lighting towers required during night work will be directed away from properties where possible.

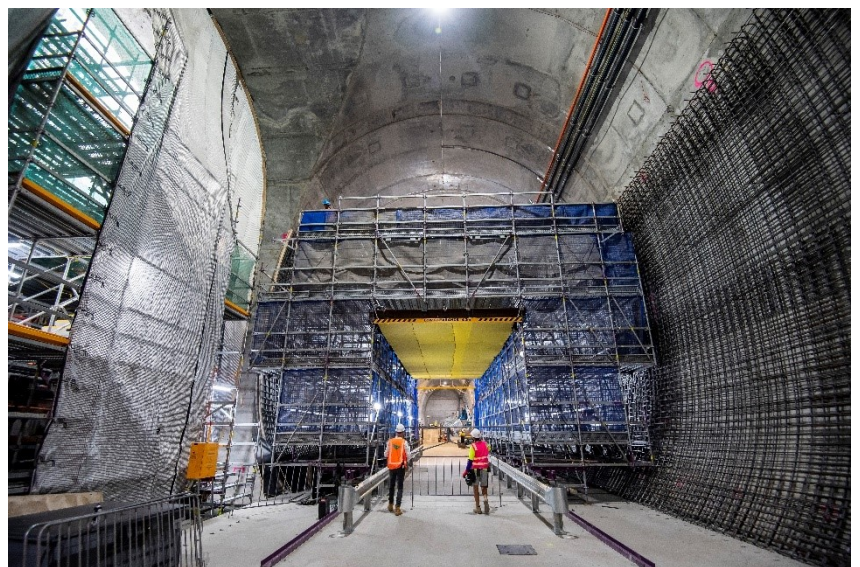
Thank you for your cooperation and understanding while we complete this essential work.

If you have any questions about the Martin Place integrated station development, please contact Natalie Dickson or Leanna Kerins on **1800 171 386** (24-hour community information line) or email martinplacemetro@transport.nsw.gov.au

For questions about the tunnel fit-out work, please contact Tahneal on 1800 171 386 or email linewidemetro@transport.nsw.gov.au

Activity (subject to change)	April 2021	May 2021	June 2021
Temporary pedestrian changes and diversions	■ ■ ■	■ ■ ■	■ ■ ■
Delivering and removing materials, machinery, spoil and equipment	■ ■ ■	■ ■ ■	■ ■ ■
Excavation activities, demolition and rock treatment	■ ■ ■	■ ■ ■	■ ■ ■
Concrete pours including formwork and reinforcement installation	■ ■ ■ ■	■ ■ ■ ■	■ ■ ■ ■
Crane use	■ ■	■ ■	■ ■
Hoarding graphic installation	■		
Driveway and parking zone changes	■ ■	■ ■	■ ■
Utility work and geotechnical investigations	■ ■ ■	■ ■ ■	■ ■ ■
24-hour tunnelling of underground pedestrian link	■	■	■
Conduit and structural work in the underground adits and caverns	■	■	■
Removal of load-out platform	■	■	
Survey monitoring	■ ■	■ ■	■ ■
Steel structure installation	■	■	■

Martin Place Station sites



Wall reinforcement work through the use of a travelling scaffold in the cavern under Elizabeth Street.

- 📞 **1800 171 386** Community information line open 24 hours
- ✉️ **martinplacemetro@transport.nsw.gov.au**
- 📄 Sydney Metro City & Southwest, PO Box K659, Haymarket NSW 1240
- 🗣️ If you need an interpreter, contact TIS National on **131 450** and ask them to call **1800 171 386**