

Notification – Iron Cove Bay

7 December 2020

Sydney Metro is Australia's biggest public transport project.

New metro rail will become the fastest, easiest and most reliable journey between the Sydney and Parramatta CBDs. Sydney Metro West will service the key precincts of Greater Parramatta, Sydney Olympic Park, The Bays and the Sydney CBD.

Metro services started in 2019 in the city's North West with a train every four minutes in the peak. Metro rail will be extended into the CBD and beyond to Bankstown in 2024. Sydney Metro includes new underground CBD stations at Barangaroo, Martin Place and Pitt Street with new metro platforms under Central.

In 2024, Sydney Metro will have 31 stations on a new 66km standalone metro rail system – the biggest urban rail project in Australian history with ultimate capacity for a metro train every two minutes in each direction under the Sydney city centre.

Marine Investigations: Iron Cove Bay

Essential geotechnical investigations are being undertaken within Iron Cove Bay to assist with early planning and design work for Sydney Metro West. These investigations are required to determine the ground conditions including strength of the underlying rock. Geotechnical work is expected to commence on **Monday 14 December 2020** for up to two weeks (weather and site conditions permitting) and then recommence on **6 January 2021** for up to three weeks (weather and site conditions permitting).

During this time three boreholes will be completed. Please see map overleaf for the work location.

Work will involve:

- Mooring a barge in the Bay and setting up the rig site including installation of temporary lighting
- Securing the legs of the barge in the seabed below the water surface
- Elevating the barge above the water surface to provide a safe platform that is unaffected by tides, currents or water movements
- Vertical boring to recover core samples below the harbour floor for testing and analysis.

Liaison with the Sydney Harbour Master and other relevant authorities has been undertaken to ensure the investigations will not affect water-based activities. A comprehensive environmental management plan will be implemented during the activities. The noise impact from these activities is expected to be minimal.

Work will be undertaken during the following hours to help minimise the duration of work in the Bay:

- Monday to Friday 7am-6pm
- Saturday 8am-6pm

 **1800 612 173** Community information line open 24 hours

 **sydneymetrowest@transport.nsw.gov.au**

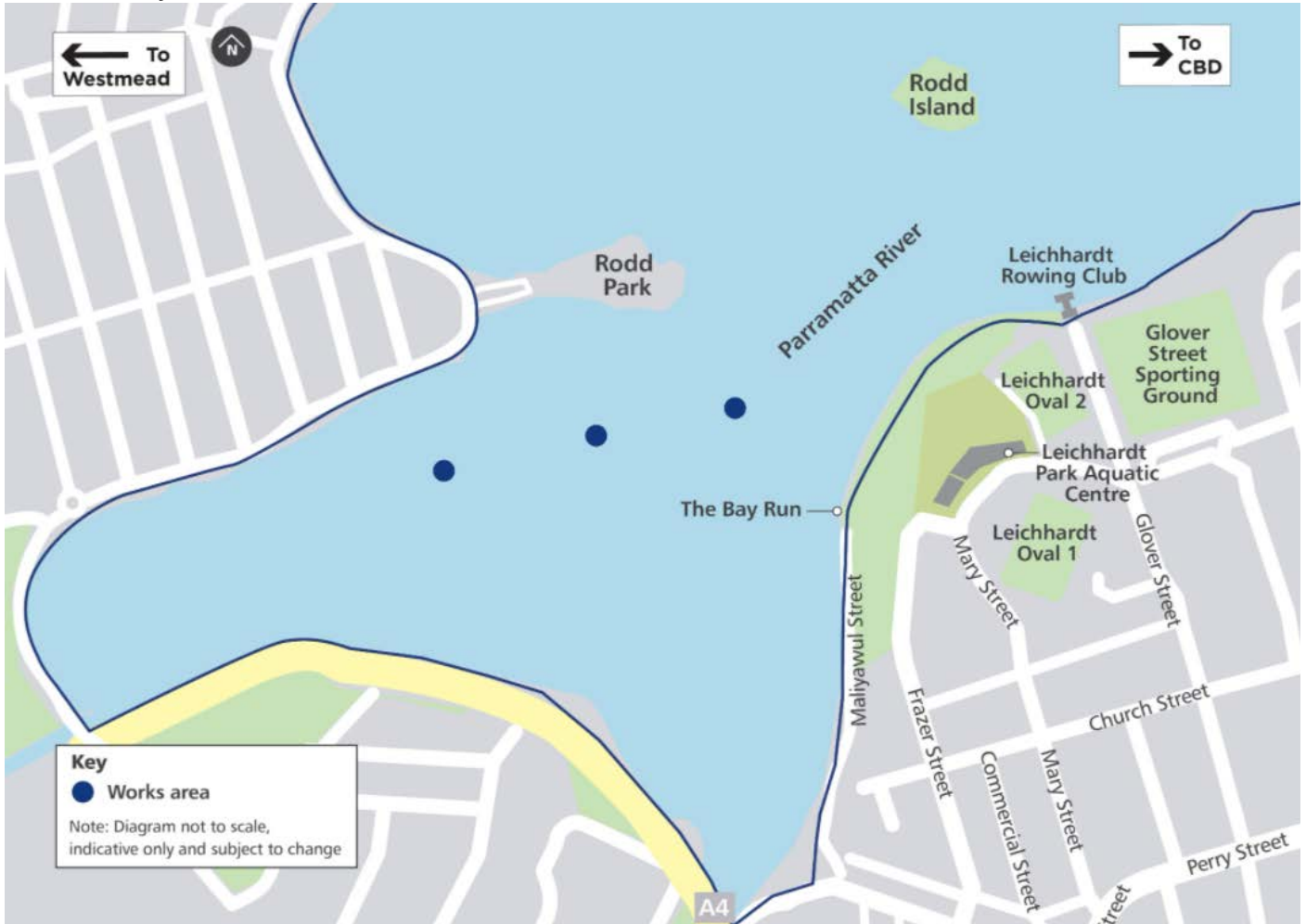
 Sydney Metro West, PO Box K659, Haymarket NSW 1240

 If you need an interpreter, contact TIS National on **131 450** and ask them to call **1800 171 386**

Equipment used:

Equipment use for these works will include but is not limited to; a barge, drill rig, hand held tools and measurement apparatus.

Iron Cove Bay work area



Contact us:

Your local Place Manager for Sydney Metro West is Scott Gumley. Scott will be your main contact for questions and enquires regarding the project and can be contacted on 1800 612 173. If you'd prefer to further receive updates by email, please contact Scott Gumley who can add you to the distribution list. Our email is: sydneymetrowest@transport.nsw.gov.au.

Thank you for your cooperation while we complete these essential works.

-  **1800 612 173** Community information line open 24 hours
-  [**sydneymetrowest@transport.nsw.gov.au**](mailto:sydneymetrowest@transport.nsw.gov.au)
-  Sydney Metro West, PO Box K659, Haymarket NSW 1240
-  If you need an interpreter, contact TIS National on **131 450** and ask them to call **1800 171 386**