

Sydney Metro is Australia's biggest public transport project.

Services started in May 2019 in the city's North West with a train every four minutes in the peak. Metro rail will be extended into the CBD and beyond to Bankstown in 2024. There will be new CBD metro railway stations at Martin Place, Pitt Street and Barangaroo and new metro platforms at Central.

In 2024, Sydney will have 31 metro railway stations and a 66 km standalone metro railway system. There will be ultimate capacity for a metro train every two minutes in each direction under the Sydney city centre.

John Holland CPB Ghella (JHCPBG) is building the 15.5 kilometre long twin railway tunnels between Chatswood and Sydenham and excavating six new metro stations.

## Tunnelling – Barangaroo

Two tunnel boring machines (TBMs) are excavating twin tunnels between Marrickville and Barangaroo, at an average depth of 35 metres below ground. They were launched in late 2018 and will be arriving at the new Barangaroo Station site later this year.

The first TBM is expected to pass under or near your property in the **Barangaroo area** in November and the second TBM will arrive about two weeks later. The TBMs travel about 120 metres a week, depending on ground conditions. A map showing the tunnel alignment is provided over the page. The tunnels will be about 30 metres below ground in this area.

## Tunnelling activities

- Excavating rock and installing the permanent lining of the tunnel.
- Safely removing excavated material via conveyor belts through the tunnels back to the Marrickville dive site, then transporting it away from the site via a dedicated truck route.
- Excavating cross passages located approximately every 240 metres along the alignment. Cross passages are an important safety feature linking the twin tunnels. After the TBMs have passed, excavators create the passages between the tunnels, which are then waterproofed and sealed with a concrete lining.

## What to expect

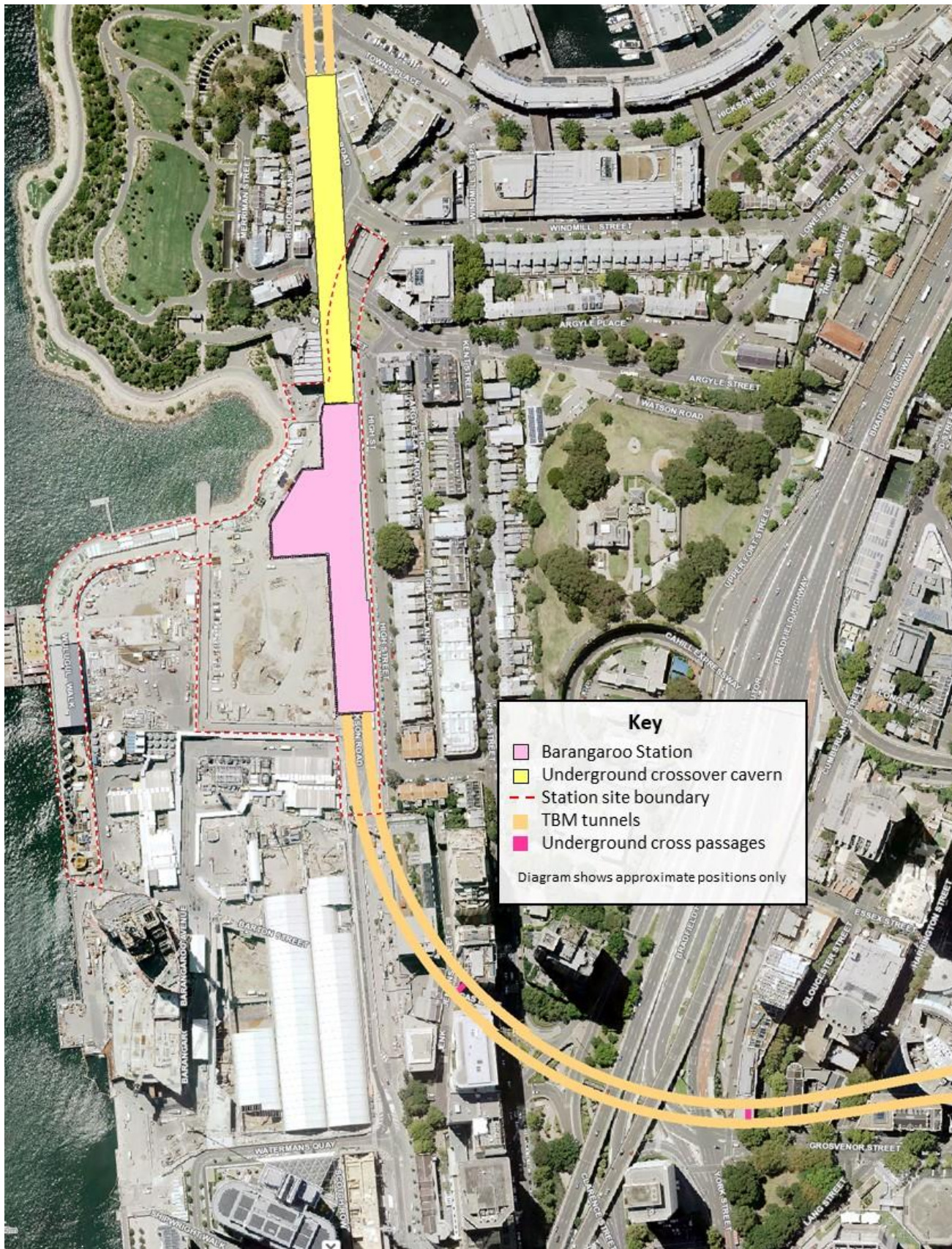
- Tunnelling will take place 24 hours a day, seven days a week.
- Some vibration and ground borne noise may be experienced for up to three days as the TBMs travel beneath or near your location.
- The noise is less noticeable during the day when traffic, household or office noise levels are higher. The vibration levels are low and will not cause property damage.
- Tunnelling surveyors will continue to collect information from surveying devices previously installed on roadways, footpaths and buildings.

If you have any questions or would like to sign up for email alerts, please contact the Community Relations Team on **1800 171 386** (24-hour community information line) or [tunnels@transport.nsw.gov.au](mailto:tunnels@transport.nsw.gov.au).

To stay up to date on the progress of the TBMs visit the tunnel boring machine tracker at [www.sydneymetro.info/tunnelling](http://www.sydneymetro.info/tunnelling) or subscribe for email updates: [tunnels@transport.nsw.gov.au](mailto:tunnels@transport.nsw.gov.au).

**Thank you for your understanding while we complete this essential work.**

## Location of Sydney Metro tunnel alignment



SMCSWTSE-JCG-TUS-SH-NFS-030698