

Sydney Metro is Australia's biggest public transport project.

Services started in May 2019 in the city's north west with a train every four minutes in the peak. Metro rail will be extended from Chatswood, under the Sydney Harbour, into the CBD and beyond to Bankstown in 2024 – when Sydney will have 31 metro stations and 66km of new metro rail.

Sydney Metro includes new CBD railway stations underground at Martin Place, Pitt Street and Barangaroo and new metro platforms under Central Station.

Sydney Metro will have ultimate capacity for a train every two minutes in each direction under the CBD.

John Holland CPB Ghella (JHCPBG) has been awarded the \$2.81 billion contract to build the twin railway tunnels from Chatswood to Sydenham and to excavate six new Sydney Metro stations.

Continuation of cross passage work near your property

Cross passages are connection tunnels between the two main metro tunnels and are located every 240 metres along the tunnel alignment. The cross passage in your area will be approximately 5.5 metres wide, 6 metres high and 11 metres long. The location is shown on the map overleaf.

Construction of the cross passage near your property will continue through June 2019. The work will be carried out **24 hours a day, seven days a week** and is expected to be completed by end of June 2019, depending on ground conditions.

Work will involve:

- installing steel support frames on both sides of the metro tunnels involving steel work, drilling and saw cutting
- excavating the cross passage using a rock hammer
- installing steel mesh, concrete, and a waterproof concrete lining in the cross passages and surrounding area.

What to expect

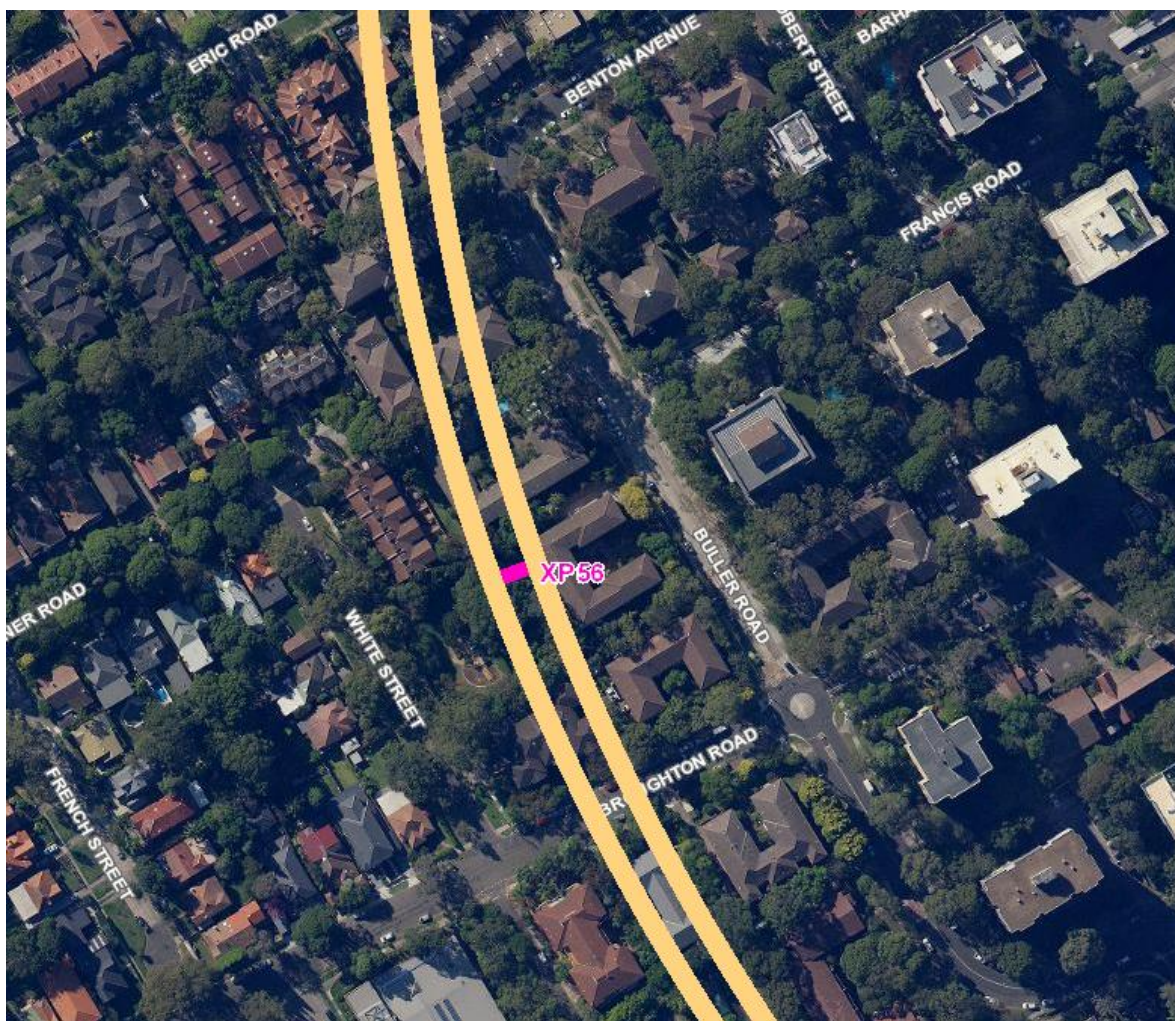
- Excavation of a cross passage using a rock hammer. Rock hammers will only be used between 7am and 10pm to minimise noise impacts at night.
- Ground-borne noise and vibration may be experienced in some buildings near a cross passage.
- Drilling for rock bolts may continue 24/7 on alternate nights until excavation is completed.
- All material and rock excavated from the cross passages will be removed by truck from the Chatswood dive site.

If you experience any disturbance from these works, please do not hesitate to contact our 24-hour community information line listed below.

Thank you for your understanding while we complete this essential work.

If you have any questions please contact **Community Relations Team** on **1800 171 386** (24 hour community information line) or sydneymetro@transport.nsw.gov.au.

Location of cross passage (XP56)



Cross passages are excavated using rock hammers like the one pictured above.

SMCSWTSE-JCG-TUN-SH-NFS-030576

