

10 October 2018

SYDNEY METRO NORTHWEST – OPERATIONS, TRAINS AND SYSTEMS

Epping to Chatswood Rail Line conversion works **Epping Station – Out-of-hours possession work**

The \$8.3 billion Sydney Metro Northwest is the first stage of Sydney Metro – Australia's biggest public transport project. The Northwest Rapid Transit Consortium (NRT) is delivering eight new railway stations, 23km of new track, 4,000 commuter parking spaces and Sydney's new generation of safe, reliable and fully automated metro trains. NRT will deliver this critical infrastructure and operate and maintain it for 15 years.

As part of the Epping to Chatswood Rail Line conversion, NRT will be required to conduct 24/7 out-of-hours work during the weekend possession from **Friday 12 to Sunday 14 October 2018**.

This work will be located within the Epping Station tunnels and within Epping rail corridor (see map overleaf).

Activities to be undertaken during this time:

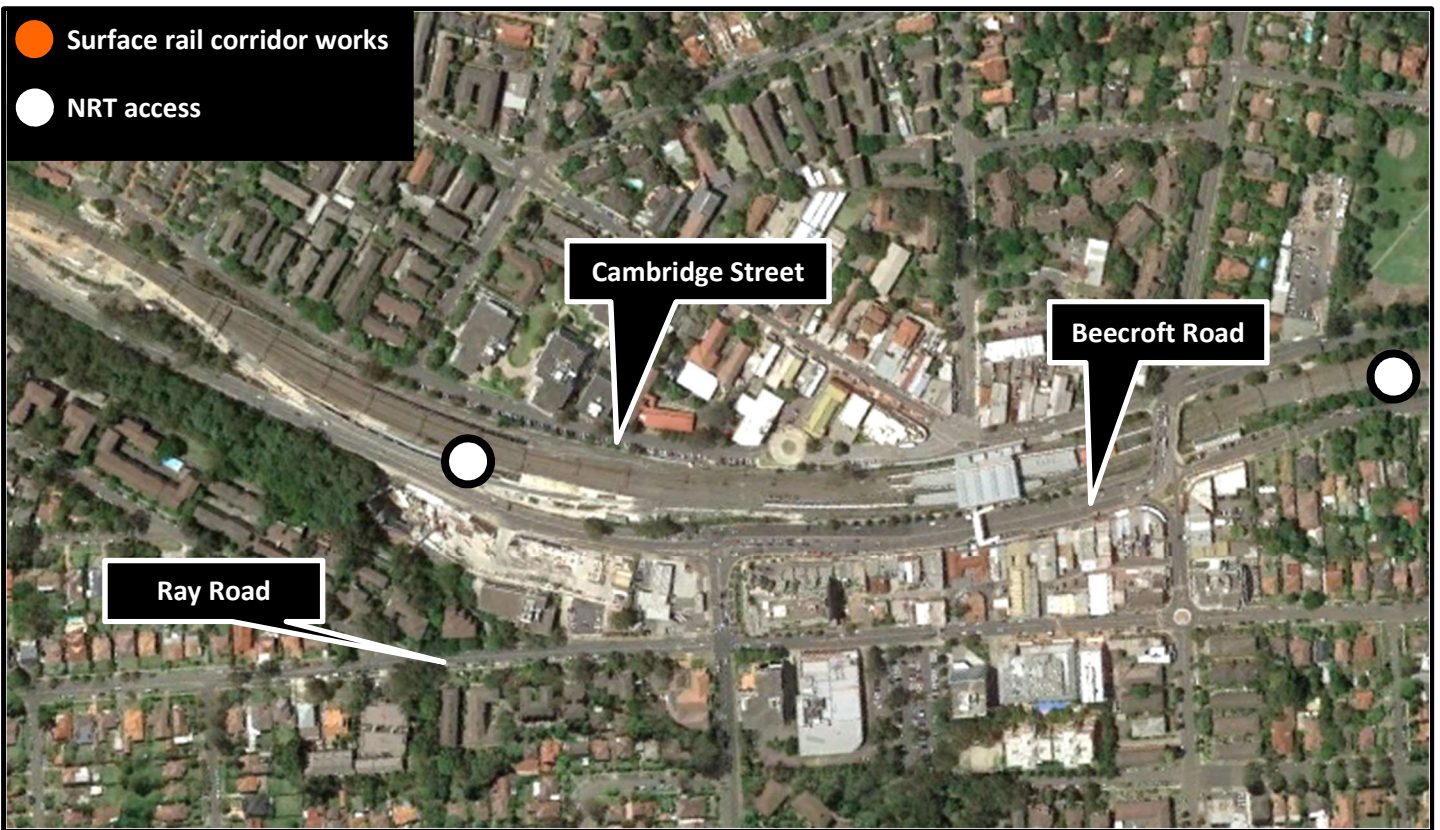
- Removal of existing track and installation of new track
- Signal modification and installation
- Intermittent out-of-hours deliveries and removal of machinery and equipment
- Storage and stockpiling of materials
- Construction machinery operating within the compound
- Other general construction activities
- Delivery and mobilisation of a crane on Cambridge Street.

What to expect during these works:

- The use of construction vehicles and equipment including excavators and track machinery
- Intermittent changes to parking conditions
- NRT vehicles accessing the rail corridor via Beecroft Road and High Street, Epping
- Construction noise associated with this work.

What we will do to minimise impacts:

- Minimise the need for vehicles to reverse and the use of non-tonal alarms
- Ensure vehicles promptly pull into designated areas when accessing site
- Undertake noise monitoring by an Environmental Coordinator.



To make a complaint, register for email updates or for more information phone 1800 019 989 (operating 24 hours a day, 7 days a week), email us at trains@metronorthwest.com.au, or visit www.sydneymetro.info.

Register your email at www.sydneymetro.info to get the latest project news and invitations to upcoming community events.

Thank you for your patience and cooperation while we carry out this important work.

ABOUT THE PROJECT

- The Sydney Metro Northwest will be delivered as part of Sydney's Rail Future — a customer-focused plan to modernise our trains. Over the coming decades, an extra 200,000 people will move into the region, taking its population above 600,000.
- New automated single deck trains will deliver a fast, safe and reliable service.
- There will be no need for a timetable – customers will just turn up and go, with a train every four minutes in the peak.
- The project includes 15km of tunnels between Bella Vista and Epping, a 4km skytrain viaduct section and the conversion of the existing Epping to Chatswood rail link to the new metro system.

ABOUT THE OPERATIONS, TRAINS AND SYSTEMS WORKS

- Northwest Rapid Transit (NRT) is delivering eight new railway stations, 4,000 commuter parking spaces and Sydney's new generation of metro trains and will operate and maintain the Sydney Metro Northwest
- The works will include:
 - Building eight new railway stations and 4,000 commuter car parking spaces
 - Delivering Sydney's new generation of metro trains
 - Building and operating the stabling and maintenance facility
 - Installing 23 kms of new track and rail systems
 - Converting the existing 13 km Epping and Chatswood line to metro status
 - The operation and maintenance of the Sydney Metro Northwest

Translating and Interpreting Services

If you need an interpreter, please call the Translating and Interpreting Service (TIS National) on 131 450 and ask them to call the Sydney Metro Northwest information line on 1800 019 989.

Korean

통역사가 필요하시면 통번역 서비스 (TIS National)에 131 450으로 연락하신 후 이들에게 Sydney Metro Northwest 프로젝트 정보 라인 1800 019 989 로전화하도록 요청하십시오.

Mandarin

如您需要传译员, 请拨打全国翻译服务(TIS National)号码 131 450, 并要求他们致电西北铁路工程信息热线:1800 019 989.

Cantonese

如您需要傳譯員, 請致電全國翻譯服務(TIS National), 號碼 131 450, 並要求他們致電西北鐵路工程資訊熱線: 1800 019 989.