

9 November 2018

## SYDNEY METRO NORTHWEST – OPERATIONS, TRAINS AND SYSTEMS

### Epping to Chatswood Line conversion works – Waratah Street - Building Delivery

The \$8.3 billion Sydney Metro Northwest is the first stage of Sydney Metro – Australia’s biggest public transport project. The Northwest Rapid Transit Consortium (NRT) is delivering eight new railway stations, 23km of new track, 4,000 commuter parking spaces and Sydney’s new generation of safe, reliable and fully automated metro trains. NRT will deliver this critical infrastructure and operate and maintain it for 15 years.

As part of the Epping to Chatswood Rail Line conversion works NRT will be delivering a switch room building via Waratah Street to the rail corridor. The switch room building will then be lifted by crane onto the Chatswood North substation. The switch room will provide power to the new Epping to Chatswood Rail Line upon completion of the works.

#### WARATAH STREET, ROSEVILLE

- From **6am Friday 16 November** NRT will commence site establishment activities that will include: tree trimming, barrier installation and temporary removal of power lines and street parking on Mowbray Road, Archer Street and Waratah Street.
- From **4am on Saturday 17 November** an oversized crane and switch room delivery will mobilise on the corner of Waratah Street and Gibson Avenue near the rail corridor (see map overleaf). Delivery will be via Mowbray Road, Archer Street and Waratah Street under police escort.
- From **12pm on Saturday 17 November** the switch room will be lifted from Waratah Street into the rail corridor.
- Once the switch room has been lifted into place, demobilisation of the crane, machinery and associated site area will commence. Reinstatement of parking and power lines will occur on **Sunday 18 November**.

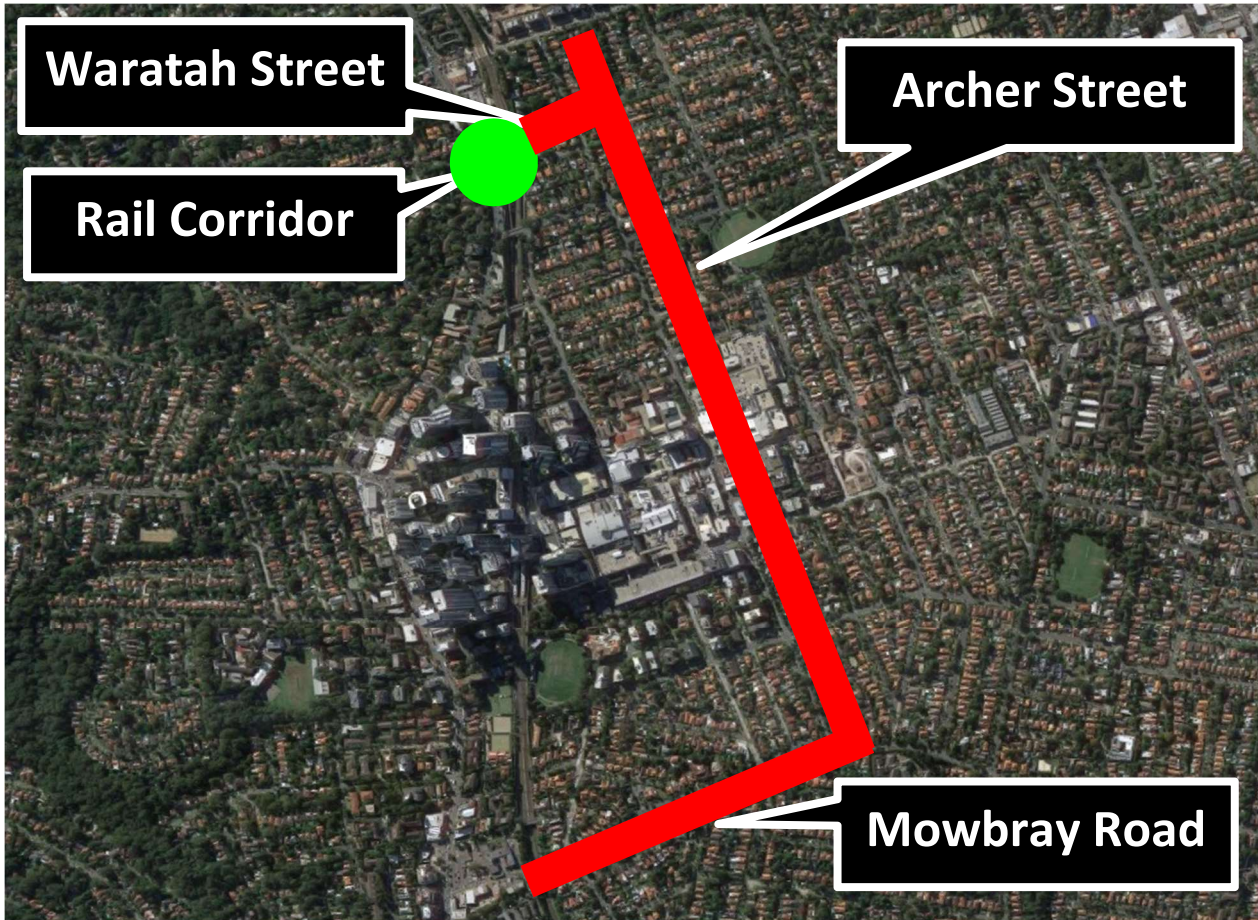
#### What to expect during this work –

- Temporary removal of street parking and restricted pedestrian access
- NRT vehicles, equipment and machinery accessing the work areas
- During the works on Waratah Street between Archer Street and Gibson Avenue access to residents’ driveways and pedestrian access will be maintained by traffic control.
- Power to residential properties to be maintained at all times during works unless notified by Ausgrid
- Lighting towers to be mobilised and construction noise associated with this work.

#### What we will do to minimise impacts –

- Offer alternate accommodation to residents directly impacted by noise or access
- Minimise the need for vehicles to reverse and the use of non-tonal alarms
- Facing of lighting towers away from residential properties

- Undertake noise monitoring during the day and night in accordance with Environment Protection Authority license conditions.



To make a complaint, register for email updates or for more information phone 1800 019 989 (operating 24 hours a day, 7 days a week), email us at [trains@metronorthwest.com.au](mailto:trains@metronorthwest.com.au), or visit [www.sydneymetro.info](http://www.sydneymetro.info).

Thank you for your patience and cooperation while we carry out this important work.

#### ABOUT THE PROJECT

- The Sydney Metro Northwest will be delivered as part of Sydney's Rail Future — a customer-focused plan to modernise our trains. Over the coming decades, an extra 200,000 people will move into the region, taking its population above 600,000.
- New automated single deck trains will deliver a fast, safe and reliable service.
- There will be no need for a timetable – customers will just turn up and go, with a train every four minutes in the peak.
- The project includes 15km of tunnels between Bella Vista and Epping, a 4km skytrain viaduct section and the conversion of the existing Epping to Chatswood rail link to the new metro system.

#### ABOUT THE OPERATIONS, TRAINS AND SYSTEMS WORKS

- Northwest Rapid Transit (NRT) is delivering eight new railway stations, 4,000 commuter parking spaces and Sydney's new generation of metro trains and will operate and maintain the Sydney Metro Northwest
- The works will include:
  - Building eight new railway stations and 4,000 commuter car parking spaces
  - Delivering Sydney's new generation of metro trains
  - Building and operating the stabling and maintenance facility
  - Installing 23 kms of new track and rail systems
  - Converting the existing 13 km Epping and Chatswood line to metro status
  - The operation and maintenance of the Sydney Metro Northwest

#### Translating and Interpreting Services

If you need an interpreter, please call the Translating and Interpreting Service (TIS National) on 131 450 and ask them to call the Sydney Metro Northwest information line on 1800 019 989.

##### Korean

통역사가 필요하시면 통번역 서비스 (TIS National)에 131 450으로 연락하신 후 이들에게 Sydney Metro Northwest 프로젝트 정보 라인 1800 019 989 로전화하도록 요청하십시오.

##### Mandarin

如您需要传译员, 请拨打全国翻译服务(TIS National) 号码 131 450, 并要求他们致电西北铁路工程信息热线: 1800 019 989.

##### Cantonese

如您需要傳譯員, 請致電全國翻譯服務(TIS National), 號碼 131 450, 並要求他們致電西北鐵路工程資訊熱線: 1800 019 989.