

5 November 2018

SYDNEY METRO NORTHWEST – OPERATIONS, TRAINS AND SYSTEMS UPDATE: Kellyville - out-of-hours pedestrian footbridge installation including Old Windsor Road temporary closure

The \$8.3 billion Sydney Metro Northwest is the first stage of Sydney Metro – Australia’s biggest public transport project. The Northwest Rapid Transit Consortium (NRT) is delivering eight new railway stations, 23km of new track, 4,000 commuter parking spaces and Sydney’s new generation of safe, reliable and fully automated metro trains. NRT will deliver this critical infrastructure and operate and maintain it for 15 years.

PEDESTRIAN FOOTBRIDGE WORKS – TEMPORARY CLOSURE OF OLD WINDSOR ROAD AND SAMANTHA RILEY DRIVE

On **Friday 9 November** and **Saturday 10 November** between **10pm and 6am** out-of-hours work will occur to deliver and install a pedestrian footbridge in two stages over Old Windsor Road. Old Windsor Road will be temporarily closed each night and reopen to traffic throughout the day.

To safely enable the oversized delivery, crane mobilisation and installation of the truss sections, NRT will implement the following traffic conditions between **10pm and 6am** –

- **Friday 9 November – A full closure of Old Windsor Road between Windsor Road and the intersection at Sunnyholt Road and Memorial Avenue**
- **Saturday 10 November – A full closure of the Riley T-way and partial closure of Old Windsor and Samantha Riley Drive.**

Detours will be in place and drivers should allow for extended travel times, follow directions of traffic controllers, adhere to reduced speed limits and follow traffic signs.

Traffic changes will include:

- Detours for motorists travelling on Old Windsor Road via Windsor Road to Memorial Avenue
- For local traffic and emergency services, limited access will be available between the Windsor Road and Old Windsor Road intersection to Newbury Avenue

Construction during this time will include:

- Establish the work area including the placement of crane, temporary lighting towers and concrete barriers
- Delivery and installation of footbridge
- Removal of crane, lighting towers and concrete barriers.

What to expect during this activity:

- Construction vehicle movements including flashing lights and reversing beepers for the safety of workers
- Delivery and removal of plant and equipment
- Movement of traffic management vehicles
- Construction noise associated with these works within prescribed limits
- Temporary crane structure and movements
- Temporary lighting towers

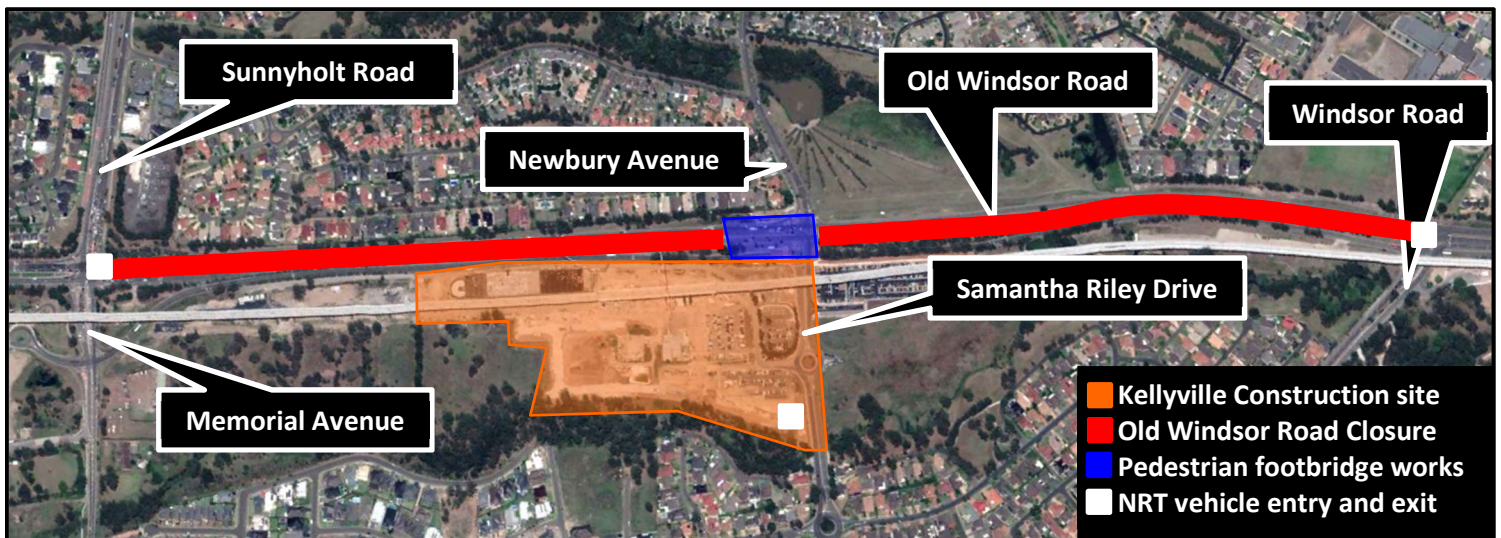
- Pedestrian and traffic diversions in line with road occupancy approvals.

We will manage these impacts by implementing the following:

- Use of non-tonal reversing alarms on equipment
- Minimise the need for vehicles to reverse
- Position lights to face away from neighbouring properties
- Implement traffic and pedestrian controls in line with road authorities.

In the event of unforeseen circumstances, machinery breakdown or poor weather conditions, work may be undertaken on the next night.

Traffic detours will be in place and drivers should allow for extended travel times, follow directions of traffic controllers, adhere to reduced speed limits and follow traffic signs.



To make a complaint, register for email updates or for more information phone 1800 019 989 (operating 24 hours a day, 7 days a week), email us at trains@metronorthwest.com.au, or visit www.sydneymetro.info.

Register your email at www.sydneymetro.info to get the latest project news and invitations to upcoming community events.

Thank you for your patience and cooperation while we carry out this important work.

ABOUT THE PROJECT

- The Sydney Metro Northwest will be delivered as part of Sydney's Rail Future — a customer-focused plan to modernise our trains. Over the coming decades, an extra 200,000 people will move into the region, taking its population above 600,000.
- New automated single deck trains will deliver a fast, safe and reliable service.
- There will be no need for a timetable – customers will just turn up and go, with a train every four minutes in the peak.
- The project includes 15km of tunnels between Bella Vista and Epping, a 4km skytrain viaduct section and the conversion of the existing Epping to Chatswood rail link to the new metro system.

ABOUT THE OPERATIONS, TRAINS AND SYSTEMS WORKS

- Northwest Rapid Transit (NRT) is delivering eight new railway stations, 4,000 commuter parking spaces and Sydney's new generation of metro trains and will operate and maintain the Sydney Metro Northwest
- The works will include:
 - Building eight new railway stations and 4,000 commuter car parking spaces
 - Delivering Sydney's new generation of metro trains
 - Building and operating the stabling and maintenance facility
 - Installing 23 kms of new track and rail systems
 - Converting the existing 13 km Epping and Chatswood line to metro status
 - The operation and maintenance of the Sydney Metro Northwest

Translating and Interpreting Services

If you need an interpreter, please call the Translating and Interpreting Service (TIS National) on 131 450 and ask them to call the Sydney Metro Northwest information line on 1800 019 989.

Korean
 통역사가 필요하시면 통번역 서비스 (TIS National)에 131 450으로 연락하신 후 이들에게 Sydney Metro Northwest 프로젝트 정보 라인 1800 019 989 로전화하도록 요청하십시오.

Mandarin
 如您需要传译员, 请拨打全国翻译服务(TIS National)号码 131 450, 并要求他们致电西北铁路工程信息热线: 1800 019 989.

Cantonese
 如您需要傳譯員, 請致電全國翻譯服務(TIS National), 號碼 131 450, 並要求他們致電西北鐵路工程資訊熱線: 1800 019 989.