

**16 November 2018**

## **SYDNEY METRO NORTHWEST – OPERATIONS, TRAINS AND SYSTEMS** **Kellyville Station – Out-of-hours concrete pours**

The \$8.3 billion Sydney Metro Northwest is the first stage of Sydney Metro – Australia’s biggest public transport project. The Northwest Rapid Transit Consortium (NRT) is delivering eight new railway stations, 23km of new track, 4,000 commuter parking spaces and Sydney’s new generation of safe, reliable and fully automated metro trains. NRT will deliver this critical infrastructure and operate and maintain it for 15 years.

Commencing **Monday 19 November**, NRT will undertake intermittent out-of-hours concrete pours within the station precinct between **5:30am to 7pm Monday to Friday** and **7am to 6pm Saturday** for approximately **three months** (see map overleaf).

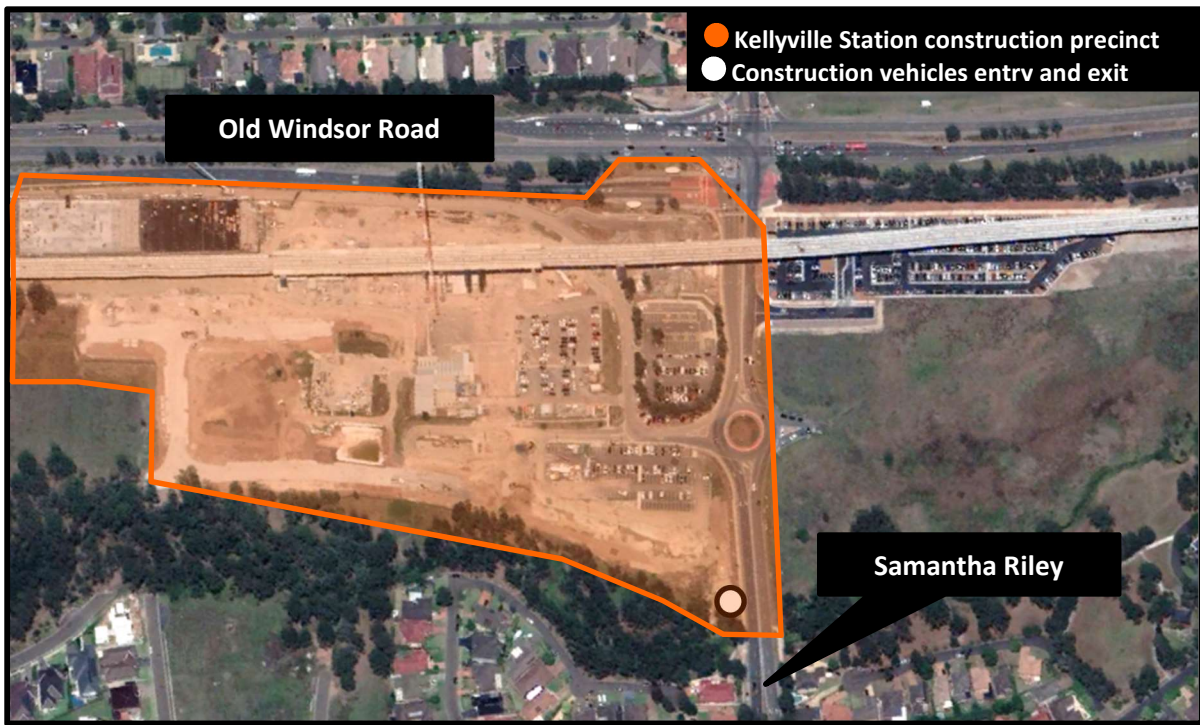
The concrete pours will form the foundations for paths, kerbs, guttering and road pavements. **Please note:** work will only be undertaken out of hours when weather conditions are predicted to arise, this will allow a quality finish on the concrete surface.

### **What to expect during these activities:**

- Equipment and machinery in use such as concrete truck, pump and vibrator
- Pedestrian and traffic diversions, detours and lane closures in line with road authorities
- Heavy machinery and equipment entering and exiting site from Samantha Riley Drive
- Street sweepers and water carts wetting down areas and sweeping the roads
- Construction noise associated with these works.

### **What we will do to minimise impacts:**

- Implement pedestrian and traffic control measures including directional signage
- Ensure vehicles pull promptly into designated work areas
- Use of water carts to manage dust.



To make a complaint, register for email updates or for more information phone **1800 019 989** (operating 24 hours a day, 7 days a week), email us at [trains@metronorthwest.com.au](mailto:trains@metronorthwest.com.au) or visit [www.sydneymetro.info](http://www.sydneymetro.info).

Thank you for your patience and cooperation while we carry out this important work.

#### ABOUT THE PROJECT

- The Sydney Metro Northwest will be delivered as part of Sydney's Rail Future — a customer-focused plan to modernise our trains. Over the coming decades, an extra 200,000 people will move into the region, taking its population above 600,000.
- New automated single deck trains will deliver a fast, safe and reliable service.
- There will be no need for a timetable – customers will just turn up and go, with a train every four minutes in the peak.
- The project includes 15km of tunnels between Bella Vista and Epping, a 4km skytrain viaduct section and the conversion of the existing Epping to Chatswood rail link to the new metro system.

#### ABOUT THE OPERATIONS, TRAINS AND SYSTEMS WORKS

- Northwest Rapid Transit (NRT) is delivering eight new railway stations, 4,000 commuter parking spaces and Sydney's new generation of metro trains and will operate and maintain the Sydney Metro Northwest
- The works will include:
  - Building eight new railway stations and 4,000 commuter car parking spaces
  - Delivering Sydney's new generation of metro trains
  - Building and operating the stabling and maintenance facility
  - Installing 23 kms of new track and rail systems
  - Converting the existing 13 km Epping and Chatswood line to metro status
  - The operation and maintenance of the Sydney Metro Northwest

### Translating and Interpreting Services

If you need an interpreter, please call the Translating and Interpreting Service (TIS National) on **131 450** and ask them to call the Sydney Metro Northwest information line on **1800 019 989**.

#### Korean

통역사가 필요하시면 통번역 서비스 (TIS National)에 131 450으로 연락하신 후 이들에게 Sydney Metro Northwest 프로젝트 정보 라인 1800 019 989 로전화하도록 요청하십시오.

#### Mandarin

如您需要传译员, 请拨打全国翻译服务(TIS National) 号码 131 450, 并要求他们致电西北铁路工程信息热线: 1800 019 989.

#### Cantonese

如您需要传译员, 请致电全国翻译服务(TIS National), 号码 131 450, 并要求他们致电西北铁路工程资讯热线: 1800 019 989.