

16 August 2018

SYDNEY METRO NORTHWEST – OPERATIONS, TRAINS AND SYSTEMS

Samantha Riley Drive out-of-hours road works/ access changes to commuter overflow car park

The \$8.3 billion Sydney Metro Northwest is the first stage of Sydney Metro – Australia's biggest public transport project. The Northwest Rapid Transit Consortium (NRT) is delivering eight new railway stations, 23km of new track, 4,000 commuter parking spaces and Sydney's new generation of safe, reliable and fully automated metro trains. NRT will deliver this critical infrastructure and operate and maintain it for 15 years.

From **Friday 24 August** vehicle access to the commuter car park on the south side of Samantha Riley Drive will be relocated. Vehicle access will be via the new precinct street, adjacent to the creek, and access will be **left in/left out** only (see map overleaf).

These changes are required to allow removal of the existing roundabout as part of the final design for Kellyville Station. Upon completion of the project, access to the new multi storey car park on the south side of Samantha Riley Drive will be available via a new signalised intersection.

Access to the commuter car park on the northern side of Samantha Riley Drive will remain left in/left out from Samantha Riley Drive, however the existing roundabout will no longer be available for turning movements out of the car park.

To assist with these changes, out-of-hours work on Samantha Riley Drive will occur on **Thursday 23 August** between **7pm** and **7am**. In the event of poor weather conditions or unforeseen circumstances, line marking and access changes may occur in the following week.

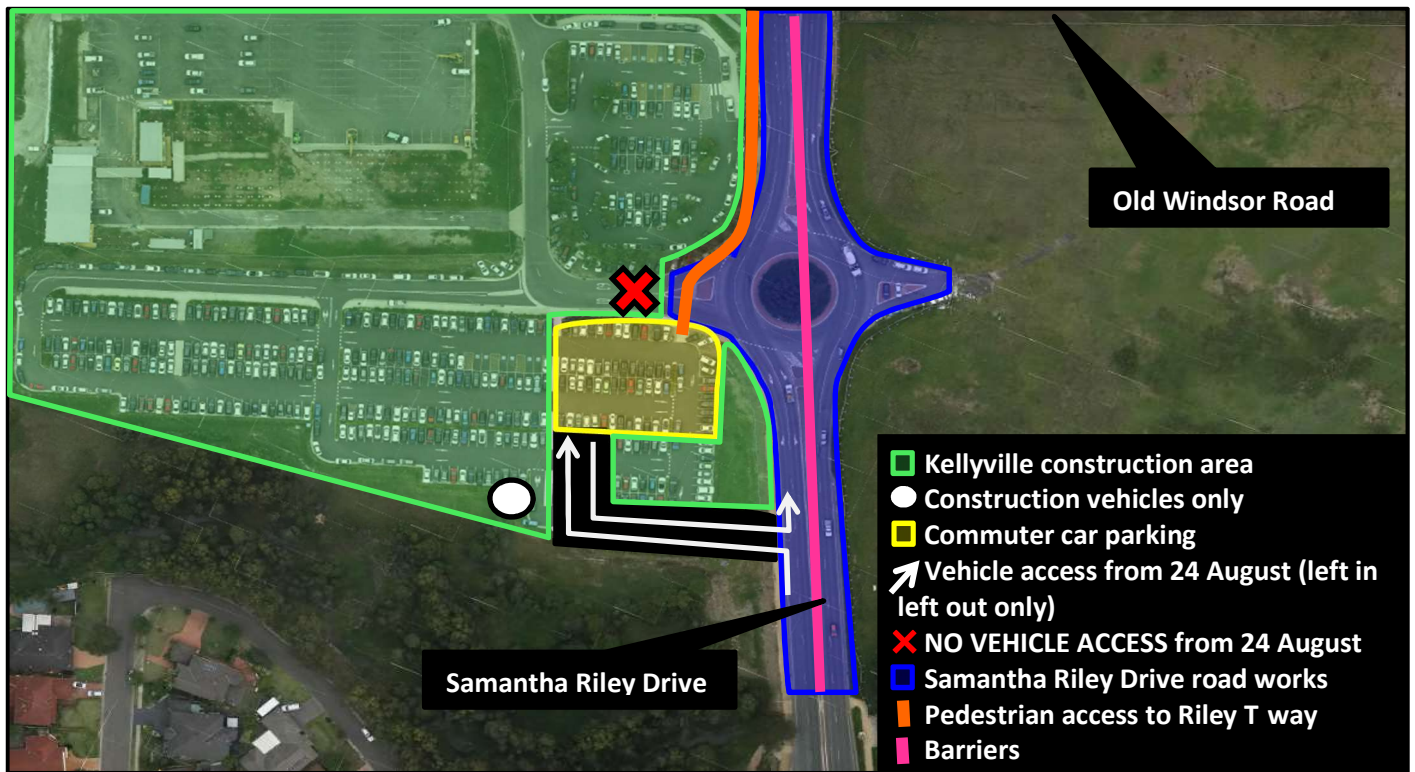
There will be construction noise associated with these works and temporary lane closures will be required. Drivers should follow traffic controls and drive with caution.

What to expect during this activity:

- Relocation and removal of concrete and water filled barriers
- Removal and reinstatement of line marking
- Construction vehicle movements including flashing vehicle lights and non-tonal reversing beepers for the safety of workers
- Traffic diversions and lane closures as required and in line with road authorities
- Establishment of lighting towers
- Construction noise associated with these works.

What we will do to minimise impacts:

- Implement traffic and pedestrian control measures
- Construction vehicles promptly pulling into designated work areas
- Position lighting to face away from neighbouring properties
- Verification of construction noise via noise monitoring.



To make a complaint, register for email updates or for more information phone **1800 019 989** (operating 24 hours a day, 7 days a week), email us at trains@metronorthwest.com.au or visit www.sydneymetro.info.

Thank you for your patience and cooperation while we carry out this critical work.

ABOUT THE PROJECT

- The Sydney Metro Northwest will be delivered as part of Sydney's Rail Future — a customer-focused plan to modernise our trains. Over the coming decades, an extra 200,000 people will move into the region, taking its population above 600,000.
- New automated single deck trains will deliver a fast, safe and reliable service.
- There will be no need for a timetable – customers will just turn up and go, with a train every four minutes in the peak.
- The project includes 15km of tunnels between Bella Vista and Epping, a 4km skytrain viaduct section and the conversion of the existing Epping to Chatswood rail link to the new metro system.

ABOUT THE OPERATIONS, TRAINS AND SYSTEMS WORKS

- Northwest Rapid Transit (NRT) is delivering eight new railway stations, 4,000 commuter parking spaces and Sydney's new generation of metro trains and will operate and maintain the Sydney Metro Northwest
- The works will include:
 - Building eight new railway stations and 4,000 commuter car parking spaces
 - Delivering Sydney's new generation of metro trains
 - Building and operating the stabling and maintenance facility
 - Installing 23 kms of new track and rail systems
 - Converting the existing 13 km Epping and Chatswood line to metro status
 - The operation and maintenance of the Sydney Metro Northwest

Translating and Interpreting Services

If you need an interpreter, please call the Translating and Interpreting Service (TIS National) on 131 450 and ask them to call the Sydney Metro Northwest information line on 1800 019 989.

Korean

통역사가 필요하시면 통번역 서비스 (TIS National)에 131 450으로 연락하신 후 이들에게 Sydney Metro Northwest 프로젝트 정보 라인 1800 019 989 로전화하도록 요청하십시오.

Mandarin

如您需要传译员, 请拨打全国翻译服务(TIS National) 号码 131 450, 并要求他们致电西北铁路工程信息热线: 1800 019 989.

Cantonese

如您需要傳譯員, 請致電全國翻譯服務(TIS National), 號碼 131 450, 並要求他們致電西北鐵路工程資訊熱線: 1800 019 989.