

1 August 2018

SYDNEY METRO NORTHWEST – OPERATIONS, TRAINS AND SYSTEMS **UPDATE: Rouse Hill Drive, Windsor Road and Tempus Street – out-of-hours roadworks**

The \$8.3 billion Sydney Metro Northwest is the first stage of Sydney Metro – Australia’s biggest public transport project. The Northwest Rapid Transit Consortium (NRT) is delivering eight new railway stations, 23km of new track, 4,000 commuter parking spaces and Sydney’s new generation of safe, reliable and fully automated metro trains. NRT will deliver this critical infrastructure and operate and maintain it for 15 years.

A program of intermittent out-of-hours work is being undertaken on Rouse Hill Drive and the associated intersections; Tempus Street, Windsor Road and Schofields Road between **7pm Mondays to 5am Saturdays**. This work commenced in mid-June and will take approximately **eight months** to complete (see map overleaf).

These works are required to modify the existing intersections at Windsor Road, Schofields Road and Tempus Street and Rouse Hill Drive, connect essential utilities to the station site, and to accommodate Rouse Hill Station, the new T-way and future growth in the area.

During these works, NRT will endeavour to maintain access to Rouse Hill Drive, however further information will be provided in the event temporary road closures are required.

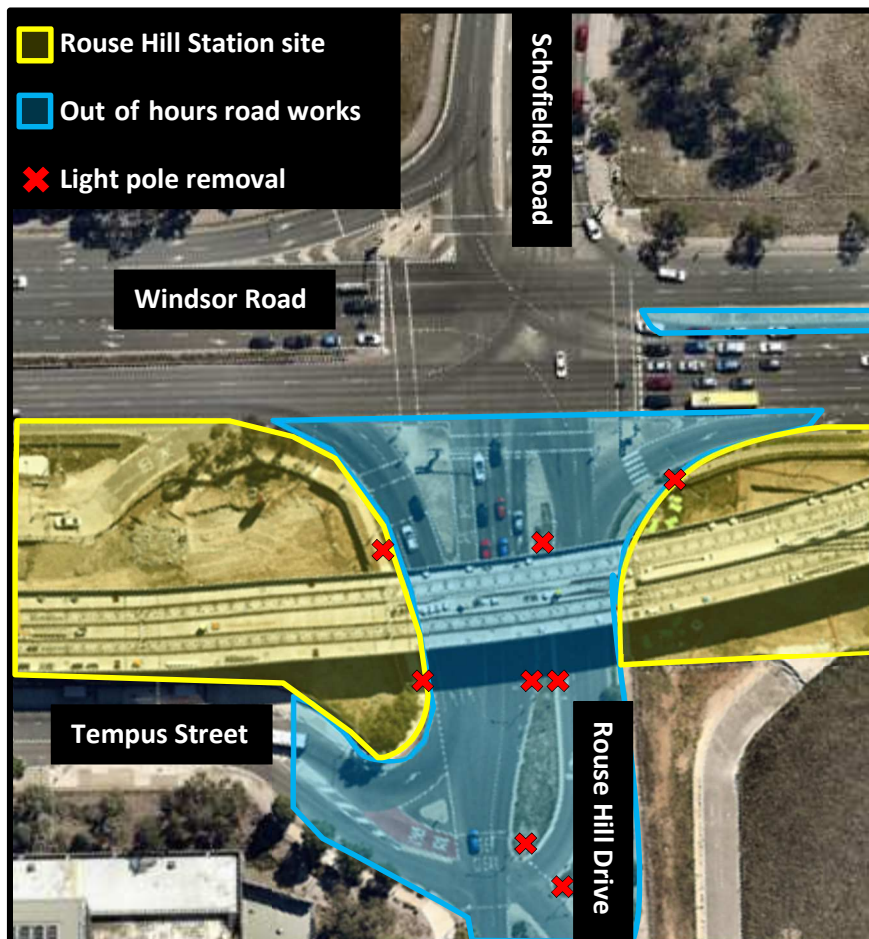
What to expect during these works:

- Removal of median islands and light poles on Rouse Hill Drive and Windsor Road
- Installation of temporary lighting, concrete barriers and fencing to secure work areas
- Construction vehicle movements including flashing lights and non-tonal reversing beepers
- Plant and machinery operating on the road, including excavators and road saws
- Excavation of road pavement and service installation
- Asphaltting, line marking and signage installation
- Pedestrian/ cyclists and motorists traffic diversions and temporary speed restrictions in line with road occupancy approvals
- Construction works will be audible to nearby residents.

We will manage these impacts by implementing the following:

- Notifying residents and businesses of key activities and major stages of construction
- Use of non-tonal reversing alarms on equipment
- Minimising the need for vehicles to reverse
- Position lighting to face away from neighbouring properties
- Implement traffic and pedestrian controls and signage in line with road authority requirements
- Ensure construction vehicles promptly pull into designated areas when accessing work area.

Drivers should allow for extended travel times, adhere to reduced speed limits, drive carefully through work zones and follow the direction of traffic controllers and signage.



To make a complaint, register for email updates or for more information phone **1800 019 989** (operating 24 hours a day, 7 days a week), email us at trains@metronorthwest.com.au or visit www.sydneymetro.info.

Thank you for your patience and cooperation while we carry out this important work.

ABOUT THE PROJECT

- The Sydney Metro Northwest will be delivered as part of Sydney's Rail Future — a customer-focused plan to modernise our trains. Over the coming decades, an extra 200,000 people will move into the region, taking its population above 600,000.
- New automated single deck trains will deliver a fast, safe and reliable service.
- There will be no need for a timetable - customers will just turn up and go, with a train every four minutes in the peak.
- The project includes 15km of tunnels between Bella Vista and Epping, a 4km skytrain viaduct section and the conversion of the existing Epping to Chatswood rail link to the new metro system.

ABOUT THE OPERATIONS, TRAINS AND SYSTEMS WORKS

- Northwest Rapid Transit (NRT) is delivering eight new railway stations, 4,000 commuter parking spaces and Sydney's new generation of metro trains and will operate and maintain the Sydney Metro Northwest
- The works will include:
 - Building eight new railway stations and 4,000 commuter car parking spaces
 - Delivering Sydney's new generation of metro trains
 - Building and operating the stabling and maintenance facility
 - Installing 23 kms of new track and rail systems
 - Converting the existing 13 km Epping and Chatswood line to metro status
 - The operation and maintenance of the Sydney Metro Northwest

Translating and Interpreting Services

If you need an interpreter, please call the Translating and Interpreting Service (TIS National) on 131 450 and ask them to call the Sydney Metro Northwest information line on 1800 019 989.

Korean

통역사가 필요하시면 통번역 서비스 (TIS National)에 131 450으로 연락하신 후 이들에게 Sydney Metro Northwest 프로젝트 정보 라인 1800 019 989 로전화하도록 요청하십시오.

Mandarin

如您需要传译员, 请拨打全国翻译服务(TIS National) 号码 131 450, 并要求他们致电西北铁路工程信息热线: 1800 019 989.

Cantonese

如您需要傳譯員, 請致電全國翻譯服務(TIS National), 號碼 131 450, 並要求他們致電西北鐵路工程資訊熱線: 1800 019 989.