

17 July 2018

## **SYDNEY METRO NORTHWEST – OPERATIONS, TRAINS AND SYSTEMS Epping Services Facility – Construction Update July to September 2018**

The \$8.3 billion Sydney Metro Northwest is the first stage of Sydney Metro – Australia’s biggest public transport project. The Northwest Rapid Transit Consortium (NRT) is delivering eight new railway stations, 23km of new track, 4,000 commuter parking spaces and Sydney’s new generation of safe, reliable and fully automated metro trains. NRT will deliver this critical infrastructure and operate and maintain it for 15 years.

Construction of the Epping Services Facility is advancing with the concrete structure almost complete, the installation of the storm water system and other services continuing and building and traction substation finishing works commencing in the coming weeks.

For the next **three months**, construction activities at the Epping Services Facility will include:

- Service building and traction substation finishing works such as façade installation
- Civil works including the installation of services such as water main, storm water and sewer and kerb and gutter works on Beecroft Road
- Traction substation energisation works to enable the commencement of service facility commissioning
- Pavement construction works for the service facility car park
- Landscaping
- Installation of permanent fencing for the service facility.

### **What to expect:**

- Trucks and other vehicles accessing the construction site via Beecroft Road and Ray Road (see map overleaf)
- Construction machinery and equipment operating on site including cranes, trucks, excavators and vacuum excavation trucks
- Construction noise associated with these works
- Street sweepers and water carts sweeping roads and wetting down areas to assist with dust control, as required
- Deliveries of large plant and equipment with some out-of-hours, as required by road authorities
- Routine vegetation and weed management within the site boundaries.

### **What we will do to minimise the impacts:**

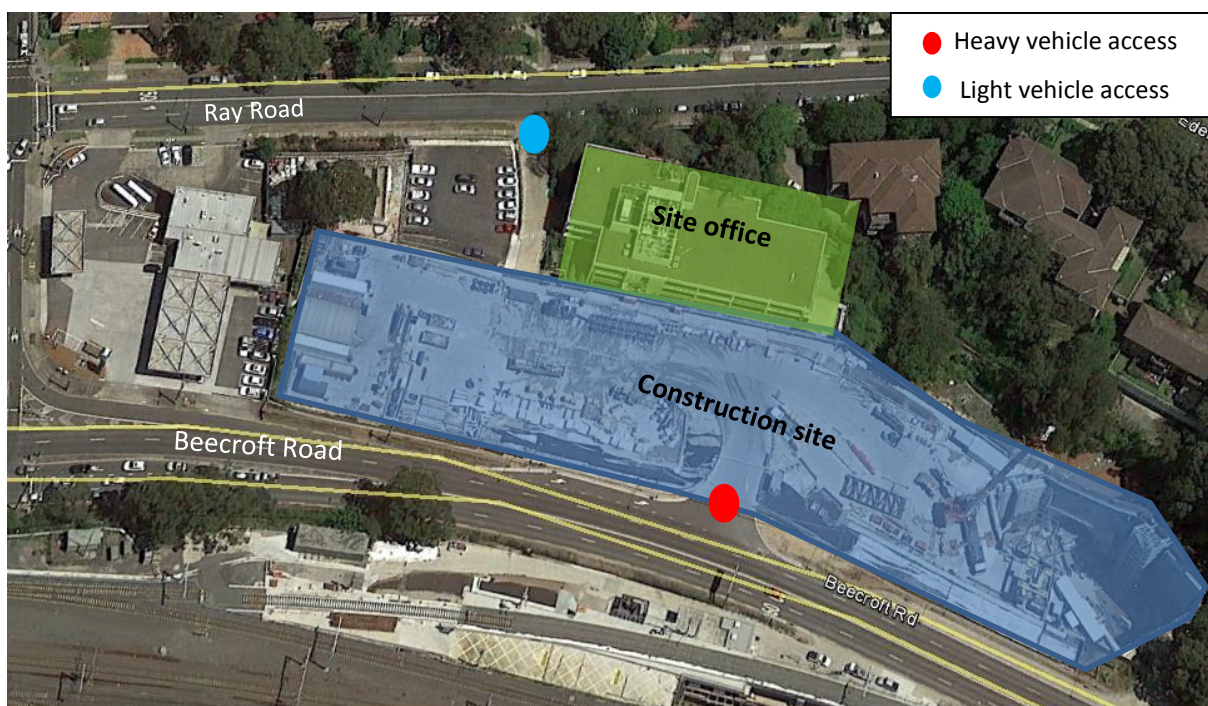
- Minimise the need for reversing and the use of non-tonal alarms on vehicles and equipment where possible
- Ensure vehicles are able to promptly pull into designated areas when accessing the site
- Notify residents and businesses of key activities including any out-of-hours work
- Use water carts and street sweepers in proximity to site to minimise dust as required.

Works will generally occur between **7am to 6pm Monday to Friday** and **8am to 1pm on Saturdays**. Low impact activities such as minor finishing works, refuelling of machinery, crane operations and managing environmental controls may occur outside of these hours.

Residents and businesses will continue to be notified in advance of ongoing construction activities, changes to traffic conditions and out-of-hours work.

For more information, register for email updates or to make a complaint phone **1800 019 989** (operating 24 hours a day, 7 days a week), email us at [trains@metronorthwest.com.au](mailto:trains@metronorthwest.com.au), or visit [www.sydneymetro.info/northwest](http://www.sydneymetro.info/northwest).

Thank you for your patience and cooperation while we carry out this important work.



## ABOUT THE PROJECT

- The Sydney Metro Northwest will be delivered as part of Sydney's Rail Future — a customer-focused plan to modernise our trains. Over the coming decades, an extra 200,000 people will move into the region, taking its population above 600,000.
- New automated single deck trains will deliver a fast, safe and reliable service.
- There will be no need for a timetable – customers will just turn up and go, with a train every four minutes in the peak.
- The project includes 15km of tunnels between Bella Vista and Epping, a 4km skytrain viaduct section and the conversion of the existing Epping to Chatswood rail link to the new metro system.

## ABOUT THE OPERATIONS, TRAINS AND SYSTEMS WORKS

- Northwest Rapid Transit (NRT) is delivering eight new railway stations, 4,000 commuter parking spaces and Sydney's new generation of metro trains and will operate and maintain the Sydney Metro Northwest
- The works will include:
  - Building eight new railway stations and 4,000 commuter car parking spaces
  - Delivering Sydney's new generation of metro trains
  - Building and operating the stabling and maintenance facility
  - Installing 23 kms of new track and rail systems
  - Converting the existing 13 km Epping and Chatswood line to metro status
  - The operation and maintenance of the Sydney Metro Northwest

## Translating and Interpreting Services

If you need an interpreter, please call the Translating and Interpreting Service (TIS National) on 131 450 and ask them to call the Sydney Metro Northwest information line on 1800 019 989.

### Korean

통역사가 필요하시면 통번역 서비스 (TIS National)에 131 450으로 연락하신 후 이들에게 Sydney Metro Northwest 프로젝트 정보 라인 1800 019 989 로전화하도록 요청하십시오.

### Mandarin

如您需要传译员, 请拨打全国翻译服务(TIS National)号码 131 450, 并要求他们致电西北铁路工程信息热线: 1800 019 989.

### Cantonese

如您需要傳譯員, 請致電全國翻譯服務(TIS National), 號碼 131 450, 並要求他們致電西北鐵路工程資訊熱線: 1800 019 989.