

1 March 2018

SYDNEY METRO NORTHWEST – OPERATIONS, TRAINS AND SYSTEMS **Viaduct & corridor update – Cudgegong Road to Windsor Road including** **out-of-hours work – March, April and May**

The \$8.3 billion Sydney Metro Northwest is the first stage of Sydney Metro – Australia's biggest public transport project. The Northwest Rapid Transit Consortium (NRT) is delivering eight new railway stations, 23km of new track, 4,000 commuter parking spaces and Sydney's new generation of safe, reliable and fully automated metro trains. NRT will deliver this critical infrastructure and operate and maintain it for 15 years.

Work is continuing along the viaduct including rail installation, noise panel installation and pouring track slabs across the Windsor Road Bridge. Noise wall construction and permanent site fencing continues to be installed along the corridor from Windsor Road Bridge to Cudgegong Road.

Other activities during March and April will include:

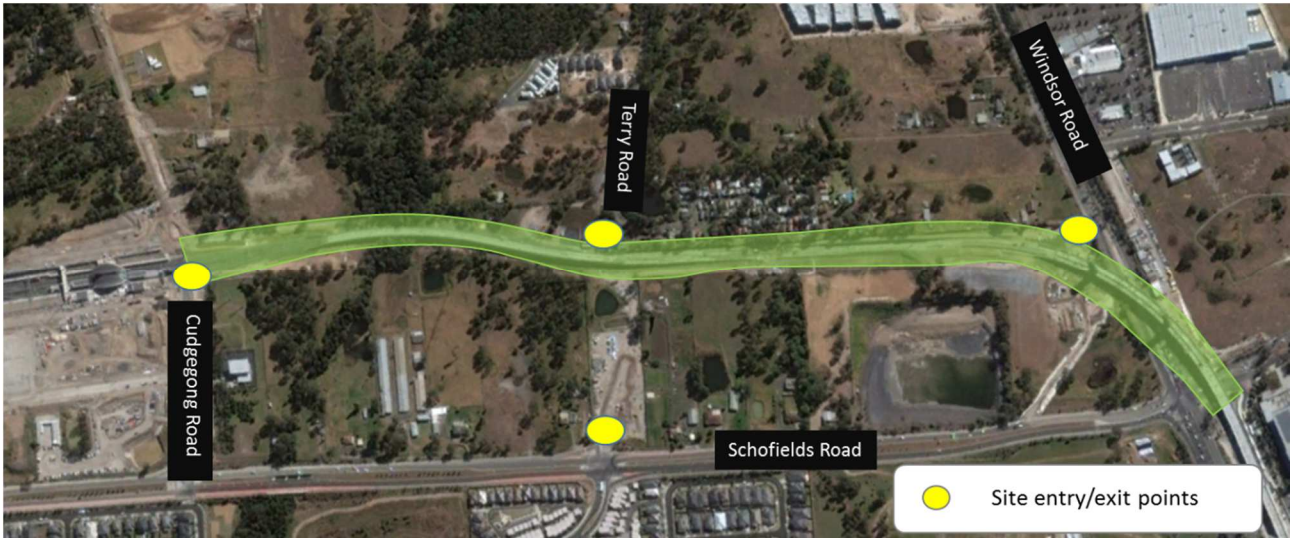
- Earthworks and removal of surplus material
- Piling and lifting operations
- Welding and grinding works
- Concrete and steel works including track laying and rail pulling
- Survey work within the site area
- Grass cutting and clearing of vegetation within the site.
- Continue installation of noise wall

What to expect

- Trucks and other vehicles entering and exiting site from Cudgegong Road, Terry Road and 97 Schofields Road. Cudgegong Road remains closed to through traffic between Schofields Road and Rouse Road.
- Delivery of materials and equipment to site, including out-of-hours deliveries for oversized materials
- Construction noise including welding and metal scraping against metal during rail pulling
- Clearing of vegetation in line with environmental approvals

We will manage the impacts of these works by undertaking the following:

- Implement traffic and pedestrian control measures where required
- Wetting down areas and use of water carts to manage dust as required
- Notify neighbouring residents of any out-of-hours work and/or deliveries of equipment
- Position lights to face away from neighbouring properties



- Use of measures to minimise the impacts of noise such as non-tonal reversing beepers
- Respite periods for high noise activities

Works will generally be carried out between **7am and 6pm, Monday to Friday and 8am to 1pm on Saturday**. Low impact activities including: general finishing works, levelling wet concrete, application of grout on tracks, surveying and managing environmental controls have been approved to occur outside of these hours.

To make a complaint, register for email updates or for more information phone **1800 019 989** (operating 24 hours a day, 7 days a week), email us at trains@metronorthwest.com.au, or visit www.sydneymetro.info.

Thank you for your patience and cooperation while we carry out this important work.

ABOUT THE PROJECT

- The Sydney Metro Northwest will be delivered as part of Sydney's Rail Future — a customer-focused plan to modernise our trains. Over the coming decades, an extra 200,000 people will move into the region, taking its population above 600,000.
- New automated single deck trains will deliver a fast, safe and reliable service.
- There will be no need for a timetable - customers will just turn up and go, with a train every four minutes in the peak.
- The project includes 15km of tunnels between Bella Vista and Epping, a 4km skytrain viaduct section and the conversion of the existing Epping to Chatswood rail link to the new metro system.

ABOUT THE OPERATIONS, TRAINS AND SYSTEMS WORKS

- Northwest Rapid Transit (NRT) is delivering eight new railway stations, 4,000 commuter parking spaces and Sydney's new generation of metro trains and will operate and maintain the Sydney Metro Northwest
- The works will include:
 - Building eight new railway stations and 4,000 commuter car parking spaces
 - Delivering Sydney's new generation of metro trains
 - Building and operating the stabling and maintenance facility
 - Installing 23 kms of new track and rail systems
 - Converting the existing 13 km Epping and Chatswood line to metro status
 - The operation and maintenance of the Sydney Metro Northwest

Translating and Interpreting Services

If you need an interpreter, please call the Translating and Interpreting Service (TIS National) on 131 450 and ask them to call the Sydney Metro Northwest information line on 1800 019 989.

Korean

통역사가 필요하시면 통번역 서비스 (TIS National)에 131 450으로 연락하신 후 이들에게 Sydney Metro Northwest 프로젝트 정보 라인 1800 019 989 로 전화하도록 요청하십시오.

Mandarin

如您需要传译员, 请拨打全国翻译服务(TIS National)号码 131 450, 并要求他们致电西北铁路工程信息热线: 1800 019 989.

Cantonese

如您需要传译员, 请致电全国翻译服务(TIS National), 号码 131 450, 并要求他们致电西北铁路工程资讯热线: 1800 019 989.