

28 February 2018

SYDNEY METRO NORTHWEST – OPERATIONS, TRAINS AND SYSTEMS

Norwest construction update including out-of-hours work - March and April

The \$8.3 billion Sydney Metro Northwest is the first stage of Sydney Metro – Australia's biggest public transport project. The Northwest Rapid Transit Consortium (NRT) is delivering eight new railway stations, 23km of new track, 4,000 commuter parking spaces and Sydney's new generation of safe, reliable and fully automated metro trains. NRT will deliver this critical infrastructure and operate and maintain it for 15 years.

Works occurring during March and April include:

STATION BOX

- Installation of steelwork and precast concrete elements for above ground service buildings
- Façade works including architectural precast cladding panels and aluminum cladding
- Waterproofing and construction of concrete planter boxes, skylight walls, ramps and stairs on top of the station box
- Continue with internal building services and finishes
- Demolition of capping beam and anchor de-stressing of the redundant bridge structure under Brookhollow Avenue
- Crane usage, until 10pm each weeknight
- Work within the tunnels will continue **24 hours a day, 7 days a week.**

PEDESTRIAN LINK

- Continue pedestrian link tunneling and breakthrough into the station box
- Commence shaft structure works

NORWEST BOULEVARDE

- Relocation of existing services on Brookhollow Avenue at the intersection with Norwest Boulevard
- Backfilling and road pavement construction on Brookhollow Avenue

Upcoming out-of-hours works will include ongoing communications cutovers as advised by utility authorities, pavement surveys, and a traffic switch in late April.

Most work will generally be carried out between **7am and 6pm Monday to Friday** and **8am and 1pm on Saturday**. Low impact activities including general finishing works, pouring concrete, refuelling of machinery and managing environment controls have been approved to occur outside of these hours.

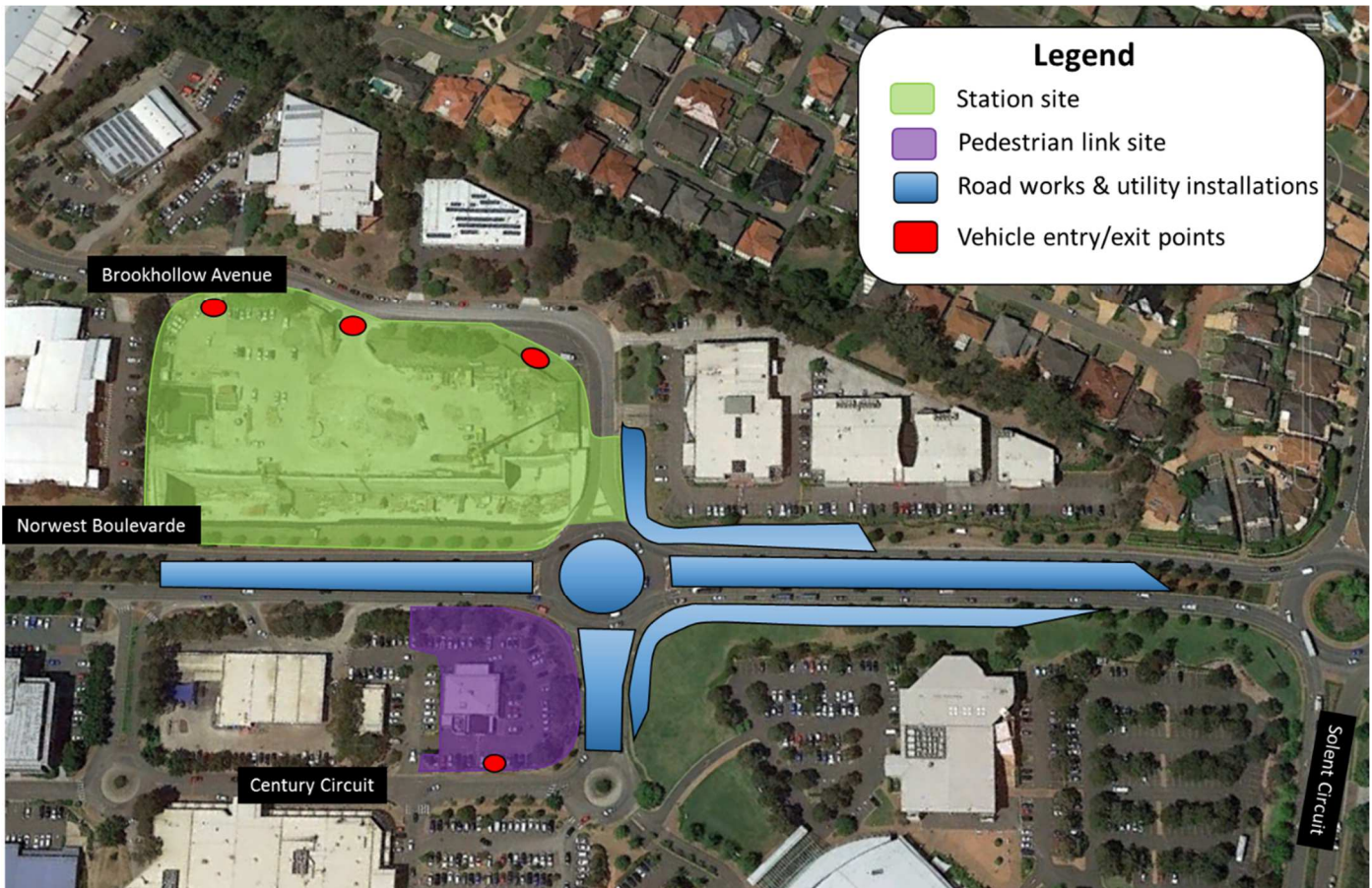
What to expect during these activities:

- Construction noise associated with these works
- High impact works such as jack hammering
- Heavy machinery including excavators and haulage trucks entering and exiting site
- Delivery of materials and equipment to site, including out-of-hours deliveries for oversized materials
- Pedestrian and traffic diversions as required in line with road occupancy approvals.

We will manage the impacts of these works by undertaking the following:

- Implement traffic and pedestrian control measures where required
- Wetting down areas and use of water carts to manage dust as required

- Notify neighbouring residents of any out-of-hours work and/or deliveries of equipment
- Use of measures to minimise the impacts of noise such as non-tonal reversing beepers
- Respite periods for high impact activities such as jack hammering.



To make a complaint, register for email updates or for more information phone **1800 019 989** (operating 24 hours a day, 7 days a week), email us at trains@metronorthwest.com.au, or visit www.sydneymetro.info.

Thank you for your patience and cooperation while we carry out this important work.

ABOUT THE PROJECT

- The Sydney Metro Northwest will be delivered as part of Sydney's Rail Future — a customer-focused plan to modernise our trains. Over the coming decades, an extra 200,000 people will move into the region, taking its population above 600,000.
- New automated single deck trains will deliver a fast, safe and reliable service.
- There will be no need for a timetable - customers will just turn up and go, with a train every four minutes in the peak.
- The project includes 15km of tunnels between Bella Vista and Epping, a 4km skytrain viaduct section and the conversion of the existing Epping to Chatswood rail link to the new metro system.

ABOUT THE OPERATIONS, TRAINS AND SYSTEMS WORKS

- Northwest Rapid Transit (NRT) is delivering eight new railway stations, 4,000 commuter parking spaces and Sydney's new generation of metro trains and will operate and maintain the Sydney Metro Northwest
- The works will include:
 - Building eight new railway stations and 4,000 commuter car parking spaces
 - Delivering Sydney's new generation of metro trains
 - Building and operating the stabling and maintenance facility
 - Installing 23 kms of new track and rail systems
 - Converting the existing 13 km Epping and Chatswood line to metro status
 - The operation and maintenance of the Sydney Metro Northwest

Translating and Interpreting Services

If you need an interpreter, please call the Translating and Interpreting Service (TIS National) on 131 450 and ask them to call the Sydney Metro Northwest information line on 1800 019 989.

Korean

통역사가 필요하시면 통번역 서비스 (TIS National)에 131 450으로 연락하신 후 이들에게 Sydney Metro Northwest 프로젝트 정보 라인 1800 019 989 로전화하도록 요청하십시오.

Mandarin

如您需要传译员, 请拨打全国翻译服务(TIS National) 号码 131 450, 并要求他们致电西北铁路工程信息热线: 1800 019 989.

Cantonese

如您需要傳譯員, 請致電全國翻譯服務(TIS National), 號碼 131 450, 並要求他們致電西北鐵路工程資訊熱線: 1800 019 989.