

15 January 2018

SYDNEY METRO NORTHWEST – OPERATIONS, TRAINS AND SYSTEMS **Willoughby to North Chatswood - 33kV Underground Cabling Work**

The \$8.3 billion Sydney Metro Northwest is the first stage of Sydney Metro – Australia’s biggest public transport project. The Northwest Rapid Transit Consortium (NRT) is delivering eight new railway stations, 23km of new track, 4,000 commuter parking spaces and Sydney’s new generation of safe, reliable and fully automated metro trains. NRT will deliver this critical infrastructure and operate and maintain it for 15 years.

As part of Sydney Metro Northwest, NRT is required to install a new power supply for the operation of the project from Ausgrid’s Willoughby Subtransmission Substation to Transport for NSW’s North Chatswood Traction Substation.

Following the completion of trenching, NRT will soon commence installation of cables between each joint bay location along the alignment.

From **Monday 22 January 2018**, NRT will set up cable equipment at joint bay locations on Gibson Avenue, Anderson Street and Nicholson Street in Chatswood (see map overleaf). Gibson Avenue, between Quinn Lane and Ashley Street, will be temporarily closed to enable the additional trenching work required for the installation of the 33kV cables. The cables will be pulled through the conduits and connected at each joint bay. This work will be undertaken **between 7am and 6pm, Monday to Friday, and 8am to 5.30pm on Saturdays** for approximately **four weeks**, weather permitting.

A small work zone of approximately 20m will be established to create a clear working area at each location. During the construction, traffic flow on local streets will be fully maintained. Traffic control will be put in place to safely direct pedestrians and motorists.

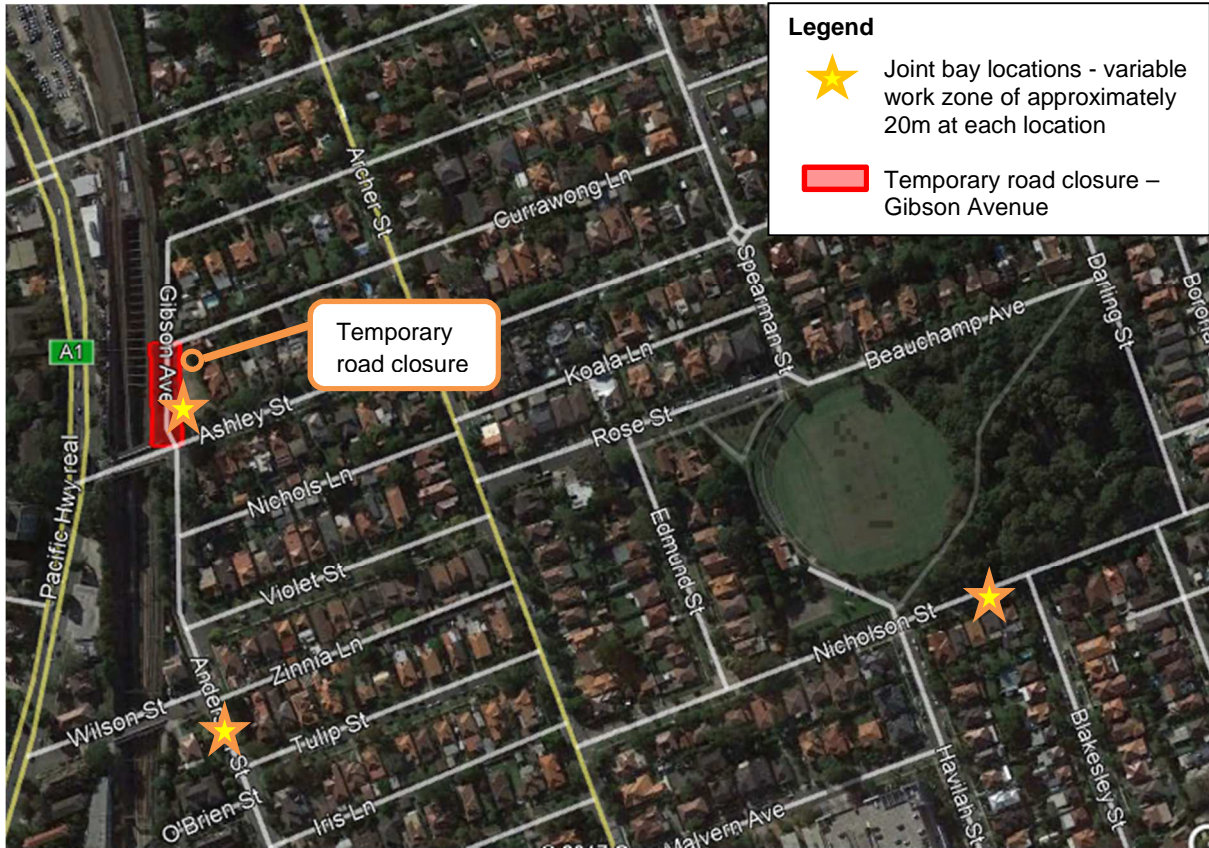
Residents and businesses in close proximity to the work area will be doorknocked prior to the work commencing.

What to expect during these works:



- Installation of concrete barriers and fencing to safely secure the work zones
- Construction equipment including: excavators, trucks, compactors and a small crane
- Excavation of joint bay pits and temporary reinstatement
- Construction noise from a vacuum truck, and other construction equipment
- Temporary traffic control and pedestrian detours
- Construction vehicle movements including flashing vehicle lights and non-tonal reversing beepers for the safety of workers
- Temporary removal of on-road parking spaces along local streets as the work progresses. A maximum of five parking spaces will be taken within each work zone. Disabled parking and loading zones affected by the work zone will be relocated to an immediate available area. This will be clearly sign posted. Vehicle access to individual properties will be maintained

We will manage the impacts of these works by undertaking the following:

- Schedule respite periods for high noise activities
- Minimise the disruption to parking within the local area by bussing in workers
- Notify local residents and businesses of key activities including any out-of-hours work
- Use water carts and sweep roads in proximity to the work area to minimise dust as required
- Ensure construction vehicles are able to promptly pull into designated areas when accessing the work area
- Minimise the need for vehicles to reverse



Legend

-  Joint bay locations - variable work zone of approximately 20m at each location
-  Temporary road closure – Gibson Avenue

To make a complaint, register for email updates or for more information phone **1800 019 989** (operating 24 hours a day, 7 days a week), email us at trains@metronorthwest.com.au or visit www.sydneymetro.info.

Thank you for your patience and cooperation while we carry out this important work.

ABOUT THE PROJECT

- The Sydney Metro Northwest will be delivered as part of Sydney’s Rail Future – a customer-focused plan to modernise our trains. Over the coming decades, an extra 200,000 people will move into the region, taking its population above 600,000.
- New automated single deck trains will deliver a fast, safe and reliable service.
- There will be no need for a timetable - customers will just turn up and go, with a train every four minutes in the peak.
- The project includes 15km of tunnels between Bella Vista and Epping, a 4km skytrain viaduct section and the conversion of the existing Epping to Chatswood rail link to the new metro system.

ABOUT THE OPERATIONS, TRAINS AND SYSTEMS WORKS

- Northwest Rapid Transit (NRT) is delivering eight new railway stations, 4,000 commuter parking spaces and Sydney’s new generation of metro trains and will operate and maintain the Sydney Metro Northwest
- The works will include:
 - Building eight new railway stations and 4,000 commuter car parking spaces
 - Delivering Sydney’s new generation of metro trains
 - Building and operating the stabling and maintenance facility
 - Installing 23 kms of new track and rail systems
 - Converting the existing 13 km Epping and Chatswood line to metro status
 - The operation and maintenance of the Sydney Metro Northwest

Translating and Interpreting Services 

If you need an interpreter, please call the Translating and Interpreting Service (TIS National) on 131 450 and ask them to call the Sydney Metro Northwest information line on 1800 019 989.

Korean
 통역사가 필요하시면 통번역 서비스 (TIS National)에 131 450으로 연락하신 후 이들에게 Sydney Metro Northwest 프로젝트 정보 라인 1800 019 989 로전화하도록 요청하십시오.

Mandarin
 如您需要传译员, 请拨打全国翻译服务(TIS National) 号码 131 450, 并要求他们致电西北铁路工程信息热线: 1800 019 989.

Cantonese
 如您需要傳譯員, 請致電全國翻譯服務(TIS National), 號碼 131 450, 並要求他們致電西北鐵路工程資訊熱線: 1800 019 989.