

3 November 2017

## **SYDNEY METRO NORTHWEST – OPERATIONS, TRAINS AND SYSTEMS**

### **Sydney Metro Trains Facility and Cudgegong Road Station**

### **Construction Update November – December**

The \$8.3 billion Sydney Metro Northwest is the first stage of the Sydney Metro project – Australia’s biggest public transport project. The Northwest Rapid Transit Consortium (NRT) is delivering eight new railway stations, 23km of new track, 4,000 commuter parking spaces and Sydney’s new generation of safe, reliable and fully automated metro trains. NRT will deliver this critical infrastructure and operate and maintain it for 15 years.

At the Sydney Metro Trains Facility finishing works are continuing with the upcoming focus on completing Tallawong Road. Cudgegong Road Station is taking shape and asphaltting of the commuter car park is soon to commence upon completion of earthworks.

#### **Activities on site in November and December will include:**

- Utility installation and bulk earth works
- Cudgegong Road bridge construction and delivery and installation of support beams
- Construction of reinforced walls and precinct streets
- Construction of commuter car park, internal roads and installation of traffic signals
- Works including concreting, steel works, footpath construction, asphaltting and line marking
- Installation of signage, landscaping, outdoor furnishes, fencing, light poles, guard rails, barriers, glazing and paving
- Removal of vegetation, telecommunication lines and power poles on Tallawong Road for future utility relocation
- Site energisation with high and low voltage power
- Commissioning works throughout both sites and commencement of site demobilisation.

#### **What to expect:**

- Heavy vehicle movements including reversing beepers and flashing vehicle lights
- Traffic control on local roads, minor delays and temporary road, lane and footpath closures as required
- Continued closure of the southern end of Cudgegong Road
- No pedestrian access on Tallawong Road or Cudgegong Road through the worksite areas
- Trucks and other vehicles will enter and exit the construction site via Schofields Road, Tallawong Road, Cudgegong Road and Oak Street
- Surveyors around site vicinity and construction noise associated with these works.

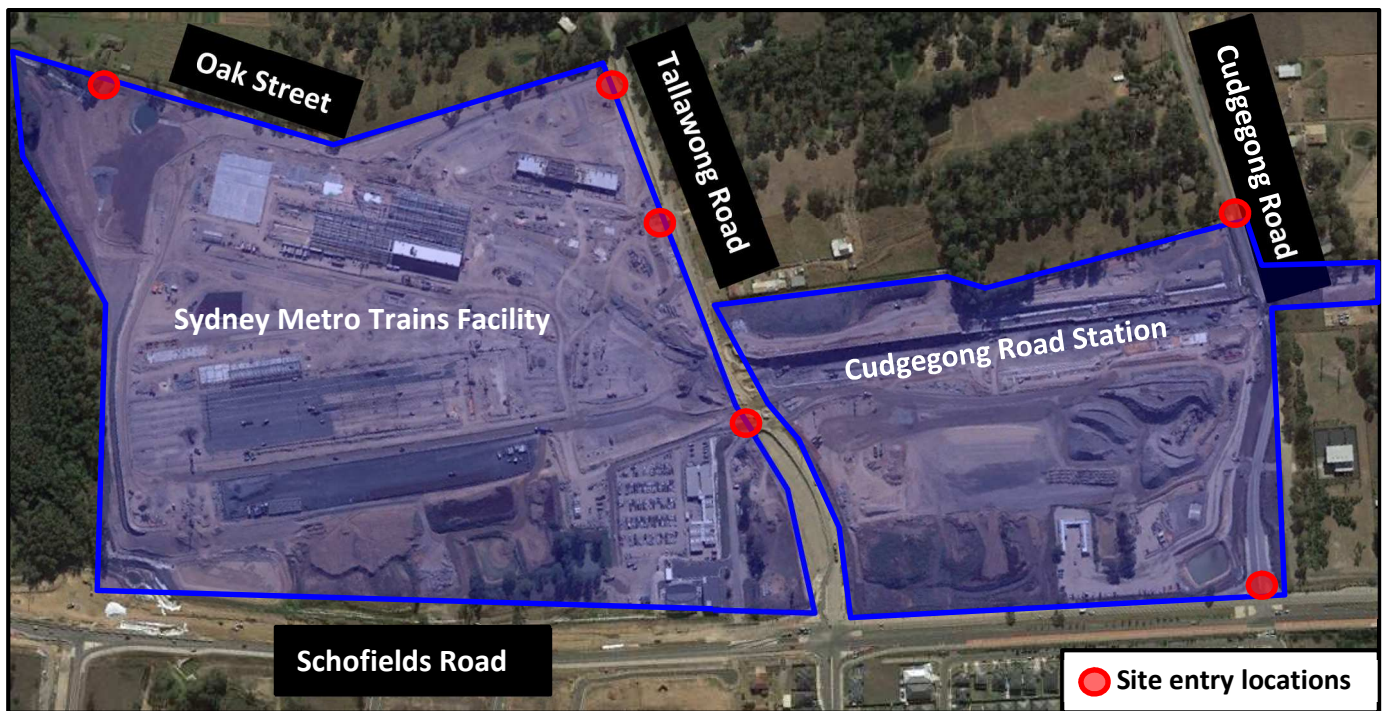
#### **What we will do to minimise impacts:**

- Traffic controls will be in place to assist motorists with temporary road and lane closures
- Positioning lighting to face away from residential properties
- Implement traffic and pedestrian control measures where required
- Street sweepers and water carts to assist with dust control as required
- Minimise the need for reversing and use non-tonal alarms on vehicles and equipment where possible.

Works will generally occur between **7am and 6pm, Monday to Friday** and **8am and 1pm on Saturday**. Low impact activities such as surveying, concrete finishing works, refueling of machinery, environmental controls and running of generators and pumps may occur outside of these hours where required.

To make a complaint, register for email updates or for more information phone 1800 019 989 (operating 24 hours a day, 7 days a week), email us at [trains@metronorthwest.com.au](mailto:trains@metronorthwest.com.au) or visit [www.sydneymetro.info](http://www.sydneymetro.info).

Thank you for your patience and cooperation while we carry out this important work.



### ABOUT THE PROJECT

- The Sydney Metro Northwest will be delivered as part of Sydney's Rail Future – a customer-focused plan to modernise our trains. Over the coming decades, an extra 200,000 people will move into the region, taking its population above 600,000.
- New automated single deck trains will deliver a fast, safe and reliable service.
- There will be no need for a timetable – customers will just turn up and go, with a train every four minutes in the peak.
- The project includes 15km of tunnels between Bella Vista and Epping, a 4km skytrain viaduct section and the conversion of the existing Epping to Chatswood rail link to the new metro system.

### ABOUT THE OPERATIONS, TRAINS AND SYSTEMS WORKS

- Northwest Rapid Transit (NRT) is delivering eight new railway stations, 4,000 commuter parking spaces and Sydney's new generation of metro trains and will operate and maintain the Sydney Metro Northwest
- The works will include:
  - Building eight new railway stations and 4,000 commuter car parking spaces
  - Delivering Sydney's new generation of metro trains
  - Building and operating the stabling and maintenance facility
  - Installing 23 kms of new track and rail systems
  - Converting the existing 13 km Epping and Chatswood line to metro status
  - The operation and maintenance of the Sydney Metro Northwest

## Translating and Interpreting Services

If you need an interpreter, please call the Translating and Interpreting Service (TIS National) on 131 450 and ask them to call the Sydney Metro Northwest information line on 1800 019 989.

#### Korean

통역사가 필요하시면 통번역 서비스 (TIS National)에 131 450으로 연락하신 후 이들에게 Sydney Metro Northwest 프로젝트 정보 라인 1800 019 989 로 전화하도록 요청하십시오.

#### Mandarin

如您需要传译员, 请拨打全国翻译服务(TIS National) 号码 131 450, 并要求他们致电西北铁路工程信息热线: 1800 019 989.

#### Cantonese

如您需要传译员, 请致电全国翻译服务(TIS National), 号码 131 450, 并要求他们致电西北铁路工程资讯热线: 1800 019 989.