

Mr Rob Sherry
Team Leader Compliance – Government Projects
Department of Planning, Housing and Infrastructure
Locked Bag 5022
PARRAMATTA NSW 2124

7 March 2024

Ref:201208-ER_DPHI-February 2024

Dear Rob

RE: Sydney Metro - Sydney Metro West SSI - ER Monthly Report for February 2024

Healthy Buildings International (HBI) submits this report to the Secretary in accordance with:

- Condition A30 (k) of the Sydney Metro West, Concept and Stage 1 SSI 10038 Approval (11 March 2021), and associated modifications (MOD 1 - 28 July 2021, MOD 2 - 3 June 2022, MOD3 – 4 July 2022, MOD 4 - 23 December 2022 and MOD 5 – 20 September 2023); and
- Condition A32(k) of the Sydney Metro West – The Bays to Sydney CBD SSI 19238057 Approval (24 August 2022).

The attached summary details the key activities undertaken by Environmental Representatives for Sydney Metro – Sydney Metro West for the month of February 2024.

Yours sincerely



Greg Byrnes
Environmental Representative

Cc:

DPHI: Major Projects Portal

Sydney Metro: Matthew Marrinan, John Ieroklis, Andrew Hendy, Cath Snelgrove, Ari Stypel, Ben Armstrong, Sarah Kemp, Syed Shah, Valerie Lebon

Contractors: Jared Lipton (AFJV), Steph Mifsud (GLC), Sally Reynolds (JCG), Tom St Vincent Welch (Quickway)



Table of Contents

1	Phase B - Central Tunnelling Package	4
1.1	Key Construction Activities During the Period	4
1.2	Key Construction Activities Look Ahead	5
1.3	ER Inspections	5
1.3.1	Photos	6
1.4	Endorsed Document/s	7
1.5	Complaints	7
1.6	Compliance	7
1.6.1	Incidents	7
1.6.2	Non-compliance and Potential Non Compliance	8
1.6.3	Audits	8
1.7	Looking Forward – Core Focus Areas	8
2	Phase F – Western Tunnelling Package	9
2.1	Key Construction Activities During the Period	9
2.2	Key Construction Activities Look Ahead	10
2.3	ER Inspections	10
2.3.1	Photos	11
2.4	Endorsed Documents	13
2.5	Complaints	13
2.6	Compliance	13
2.6.1	Incidents	13
2.6.2	Non-compliance	13
2.6.3	Audits	13
2.7	Looking Forward – Core Focus Areas	14
3	Phase G - Eastern Tunnel Package	15
3.1	Key Construction Related Activities During the Period	15
3.2	Key Construction Activities Look Ahead	16
3.3	ER Inspections	16
3.3.1	Photos	17
3.4	Endorsed document/s	18
3.5	Complaints	18
3.6	Compliance	18
3.6.1	Incidents	18
3.6.2	Non-compliance	18
3.6.3	Audits	19



3.7	Looking Forward – Core Focus Areas	19
4	PHASE H - Westmead Utility Relocation	20
4.1	Key Construction Related Activities During the Period	20
4.1	Key Construction Activities Look Ahead.....	20
4.2	ER Inspections	20
4.2.1	Photos	20
4.3	Endorsed Document/s.....	20
4.4	Complaints	21
4.1	Compliance.....	21
4.1.1	Incidents.....	21
4.1.2	Non-compliance	21
4.1.3	Audits	21
4.2	Looking Forward – Core Focus Areas	21
5	Sydney Metro Retained Obligations and Other Activity	22
5.1	Key Construction Activities During the Period	22
5.2	Key Construction Activities Look Ahead.....	22
5.3	ER Inspections	22
5.3.1	Photos	22
5.4	Endorsed Document/s.....	22
5.5	Complaints	22
5.6	Compliance.....	22
5.6.1	Incidents.....	22
5.6.2	Non-compliance	22
5.6.3	Audits	22
6	Statement of Limitations.....	23
7	Appendix A – ER Document Endorsement Records (ETP only).....	24



1 PHASE B - CENTRAL TUNNELLING PACKAGE

The Environmental Representatives for Phase B of Sydney Metro West are:

- Michael Woolley
- Greg Byrnes
- Jo Robertson

Phase B – Central Tunnelling Package (CTP) is being delivered by Acciona Ferroviol Joint Venture (AFJV). Phase B of Sydney Metro West has been further broken into:

- Phase B1: Civil works
- Phase B2: Tunnelling works

The AFJV hold EPL 21610 for this Phase of works. Activities defined as Phase B2-Tunneling Works in the Staging Report for Metro West commenced during the November 2022 reporting period at Burwood North.

1.1 Key Construction Activities During the Period

The Bays

- Ongoing support activities for the two TBMs which recommenced tunnelling during early February from the Five Dock western cavern. These activities included delivery of segments, operation of the grout plant and operation of ventilation systems.
- Ongoing construction of cross passages between the Bays and Five Dock.
- Storage of spoil in the shed and load out of trucks.
- Ongoing operation of the Construction Water Treatment Plant; site office facilities; and works shops.

Five Dock

- West shaft: Commencement of TBM tunnelling for both TBMs early in February. Removal of the concrete plinths used for the TBM traverse by rock hammer during day time hours. Installation of a truck turntable in the southern access. Northern access to be used for light vehicle parking.
- East Shaft: Removal of concrete TBM traverse plinths by excavator using a rock hammer and load out via the acoustic shed. Use of an excavator to load trucks after the kibble deposits concrete wastes on the floor of the shed due to risk of reinforcement bars protruding the trays of trucks.
- Ongoing use of a house on Waterview Street adjacent the eastern shaft for project offices.
- Cessation of the operation of the Water Treatment Plant at the east site with water being directed to the Bays WTP for treatment.
- Planned re-surfacing of Second Ave delayed due to rain.

Burwood North

- FRP for plinths for the TBM to traverse the station box.
- Completion of hardstand in the area between the station box and Parramatta Road.
- Hoarding installed along the edge of Parramatta Road adjacent the new hardstand.
- OOHVs relating to driveways and utilities in various areas around the site.
- Upgrade of the Water Treatment Plant to improve treatment processes. WTP was not discharging to stormwater.
- South Shaft: Works complete. Area planned to be used for light vehicle parking.



North Strathfield

- Ongoing load out of remaining spoil from service trenching using one excavator via the slip lane alongside Queen Street. Ongoing detailed profiling of the base of the walls and floor. FRP for base slabs, separate from the TBM plinths. Excavation of services trenches. Ongoing water profiling and FRP lining of the Nozzles at each end of the station box.
- Ongoing OOHWs for Utilities in Queen Street and other local roads.

Sydney Olympic Park

- Ongoing waterproofing of the Nozzles at the eastern end of the station box and preparation for concrete FRP works to line the Nozzles. Much reduced activities at the surface.
- Project Office Operating.

1.2 Key Construction Activities Look Ahead

- Ongoing activities as described above.
- Various OOHWs (conducted under the EPL).
- TBM tunnelling from Five Dock towards Burwood North.

1.3 ER Inspections

There were five ER inspections conducted on each Thursday during February. Sites were inspected on an alternating basis, except for Five Dock which was inspected weekly. The following actions were raised:

The Bays:

- Replenish spill kit north of the spoil shed and remove rubbish from the spill kit bin.
- Remove coloured water from the hardstand north of the spoil shed and treat appropriately.

Five Dock:

- Relocate the Real Time Noise Monitor (RTM) at Five Dock West Shaft to a new location in consultation with the Acoustic Advisor. The real time monitoring data for the period of the TBM traverse had been impacted by noise from an on-site source.

Burwood North:

- Review and update ERSED controls around stormwater pits in new hardstand areas.
- Isolate the new drain at the exit to the acoustic shed at Burwood North.

North Strathfield

- Control of weeds on the site.
- Need for hardstand where trucks were leaving the site to the west and driving over a section of unsealed kerb.
- Ensure secondary containment is provided to the IBC at the concreted area to the west of the station box.

Sydney Olympic Park

- One action raised related to waste segregation.



AFJV have been prompt in closing out actions raised during inspections.

1.3.1 Photos



Figure 1 1 The western end of the station box (The Bays).



Figure 1 2 TBMs not visible in the Western Shaft (Five Dock).



Figure 1 3 Truck turntable installed in the south entry of the Western Shaft (Five Dock).



Figure 1 4 TBM traverse plinths and modules in place (Burwood North).



Figure 1 5 South Shaft completed (Burwood North).



Figure 1 6 Pedestrian Tunnel (Burwood North).



Figure 1.7 Excavation of service trenches (North Strathfield)



Figure 1.8 Assembly of formwork structure for lining of the nozzles (SOP).

1.4 Endorsed Document/s

The following Plans were approved or endorsed by the ER during the reporting period:

- Soil and Water Management Plan (Rev 7);
- Construction Environmental Management Plan (CEMP Rev 7); and
- Waste Management Plan (Rev 5)

All documents had been reviewed and updated as part of an annual review of Management Plans.

1.5 Complaints

Based on the Sydney Metro Complaint Register for February 2024, there were 17 complaints reported during the month.

Ten complaints related to tunnelling activities along the TBM alignment including ground borne noise from the TBM (7); GBN and vibration from cross passage excavation (2) and one complaint related to the location of a specific cross passage. AFJV have reported they conduct weekly modelling to ascertain what locations are above criteria which are provided offers of Alternative Accommodation.

Four complaints were related to Five Dock all from the one resident. Complaints related to: OOHWs noise (2); property damage and lack of notification after works were postponed.

Three complaints were received at Burwood North relating to: noise from the water treatment plant; light spill; and a vacuum truck blocking drive (see Section 1.6.2).

1.6 Compliance

1.6.1 Incidents

No Incidents as defined in the Infrastructure Approval were reported by AFJV or Sydney Metro during the reporting period. Two incidents were reported under the Sydney Metro Incident Reporting procedure relating to: a minor spill of a chemical at Burwood North when a drum leaked in a storage bin; and water leaving site at North Strathfield with an oil sheen from a small oil leak from a Vacuum Truck.



During the period the Acoustic Advisor notified of an environmental event relating to noise levels at the Five Dock shaft exceeding predicted levels as presented in the DNVIS during OOHs after nighttime noise monitoring. The impact on the real time noise monitoring data was also raised as an event. It is understood that these events are being considered under the Sydney Metro Incident Reporting Procedure and Noise Monitoring Program requirements.

1.6.2 Non-compliance and Potential Non Compliance

One Non-Compliance Report was provided to the ER during the reporting period relating to a truck blocking a drive near the Burwood North site on 5th of February. The NC was identified after the project received a complaint from the property owner.

1.6.3 Audits

The fourth Independent Environmental Audit on the Sydney Metro West, Concept and Stage 1 SSI 10038 Approval commenced late February 2024.

1.7 Looking Forward – Core Focus Areas

- Dust generation at all sites during dry weather.
- Noise and Vibration management at Five Dock and Burwood North, including 24 hour operation of the TBMs from Five Dock.
- Review of noise monitoring by AFJV to verify compliance with DNVIS predictions
- Management of Ground Borne Noise from TBM operations and cross passage excavation.



2 PHASE F – WESTERN TUNNELLING PACKAGE

The Environmental Representatives for Phase F of Sydney Metro West are:

- Greg Byrnes
- Swathi Gowda
- Mike Woolley
- Maulik Bapodara

Phase F – Western Tunnelling Package (WTP) is being delivered by Gamuda Australia Laing O’Rourke Consortium (GLC).

GLC are constructing this Phase of Sydney metro West under EPL 21676.

2.1 Key Construction Activities During the Period

During February 2024, construction activities continued at all WTP sites. The following activities were undertaken at the Sydney Olympic Park (SOP), Westmead, Parramatta and the Clyde stabling and maintenance facility which includes the Rosehill, Clyde Dive and Clyde MSF construction sites:

SOP

- Form Reinforcement and concrete pour (FRP) Nozzle invert
- Caverns waterproof membrane installation

Westmead

- Station box excavation, including rock bolts and shotcreting
- Water Treatment Plant is now operational. Discharge was on hold due to high Nitrogen concentrations.
- Road Header excavation of eastern cavern of the box (24hrs/5days)
- Road header excavation of the tunnel stub in the western end of the box
- Station box excavation, rock bolts and shotcrete.
- Removal of spoil from the Station Box, tunnel stub and cavern excavation via kibble and gantry crane inside the acoustic shed.

Parramatta

- Diaphragm wall excavation with two cutters and one Grab continuing at western end of station
- Bentonite Plant operation with De sander waste material being transferred to MSF
- Water Treatment Plant commissioning
- Eastern station box excavation is continuing and steel strut installation
- Spoil being loaded straight off site to Clyde MSF west

Clyde Dive

- Horizontal tunnelling of arrival and departure tunnels with road header. Spoil transferred to MSF.
- Horizontal tunnelling with road Header between the shaft and dive excavation with Spoil transfer to MSF
- Clyde dive excavation has been completed
- The water drainage sump FRP within the Clyde Dive excavation
- Clyde Dive concrete slab base FRP.



Rosehill

- TBM 1 and 2 continue to excavate tunnel with spoil being transferred to the spoil shed via conveyor
- Ongoing operations of grout plant
- Ongoing tunnel segment delivery and storage
- Water Treatment Plant operation, though discharge is on hold due to criteria exceedances.

Clyde MSF

- Unwin Street over bridge and diversion works and spoil abutment construction
- Rail bridge works, including piling, pylon and bridge deck construction over Duck and A'Becketts Creeks
- Duck Creek and A 'Becketts Creek low flow channel excavation and rock placement ongoing.
- Water main and utilities retaining wall foundation excavation and FRH
- Water main and utilities trenching adjacent to the M4 and along Duck Creek
- Spoil storage and Management from Parramatta and Clyde Dive including Acid Sulfate Soil treatment.
- Treated soil being reused on site.
- Fill material placement
- Fuel depot UST removal and remediation

2.2 Key Construction Activities Look Ahead

The key construction activities planned for March 2024 are similar to those listed in Section 3.1 With the addition of the following:

- At SOP future concrete pours may exceed standard construction hours. A DNVIS is being prepared by GLC.
- Existing Duck Creek high flow excavation works commencing in March. This includes coffer dams creek dewatering and creek vegetation removal
- Design and construction of temporary crossing of A'Becketts Creek

2.3 ER Inspections

Four ER inspections were conducted in February 2024 (7/2/2024, 14/2/2024, 21/2/2024 and 28/2/2024). Currently, the sites are divided into two groups and visited fortnightly. The two groups are:

- Parramatta, Westmead and SOP
- Clyde Dive, Clyde MSF and Rosehill

In total of 76.4 mm (Parramatta BOM) of rain fell during February 2024, compared to a monthly average of 96.2mm. Heavy rainfall was recorded on the 5 and 21 February 2024, with 27mm and 18.4mm falling, respectively. In total five actions were raised across the WTP in February. The actions and key issues raised at the inspections were:

- **Rosehill** – The Rosehill site is being managed well with focus on tunnel excavation and spoil management. Two actions were raised during February. One for poor chemical storage practices and one for spoil haulage trucks queuing on Unwin Street outside the Rosehill site.
- **Clyde MSF** - This site currently presents the highest environmental risk for GLC with sediment controls and spoil management being the key focus area for this site. During an ER inspection, one action was raised for inadequate concrete waste management. Opportunities for improvement were raised for sediment control maintenance on Unwin, Kay and Wentworth Streets.
- **Parramatta** – The Parramatta site is being managed well with no actions raised. The excavation of the station box and the transfer of spoil to the Clyde MSF site within and outside standard construction hours presents an elevated risk for GLC and should be a key focus area for the contractor.



- **Westmead** – The Westmead site is being managed well with a focus on Station Box and tunnel excavation and spoil management. One action was raised during February for Spoil Haulage Trucks queuing outside the Westmead site on Alexandra Avenue and Park Parade during an ER Inspection.
- **Clyde Dive** – This site is being managed well with a focus on completing the dive excavation. One action was raised in February for inadequate dust suppression during the rock hammering of the dive portal.
- **SOP** – The SOP site is being managed well with no actions raised.

2.3.1 Photos



Figure 2.1: Westmead Site –Station Box excavation



Figure 2.2: Westmead site – Air compressors with noise attenuation



Figure 2.3: Parramatta Site – Station Box excavation



Figure 2.4: Parramatta site – D-Wall grab unloading spoil

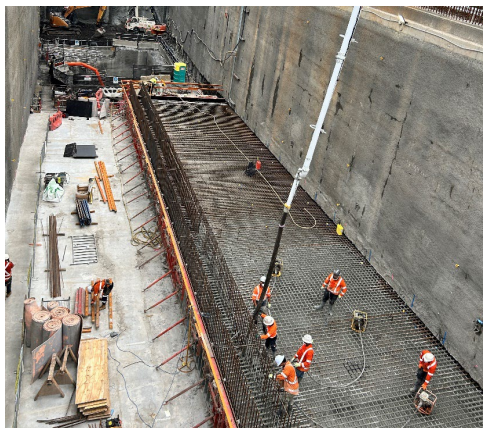


Figure 2.5: Clyde Dive site – Dive Concrete base pour



Figure 2.6: Clyde Dive site – Dive portals with water sump



Figure 2.7: Rosehill Site – Water Treatment Plant operation



Figure 2.10: Rosehill Site – TBM Spoil shed



Figure 2.11: Clyde MSF Site – Parramatta Station box spoil storage at Clyde MSF



Figure 2.12 – Clyde MSF Site – A'Becketts Creek low flow construction



Figure 2.13: Clyde MSF Site – Utilities retaining wall construction



Figure 2.14: Clyde MSF Site – Wheel wash with hose cleaning tyres

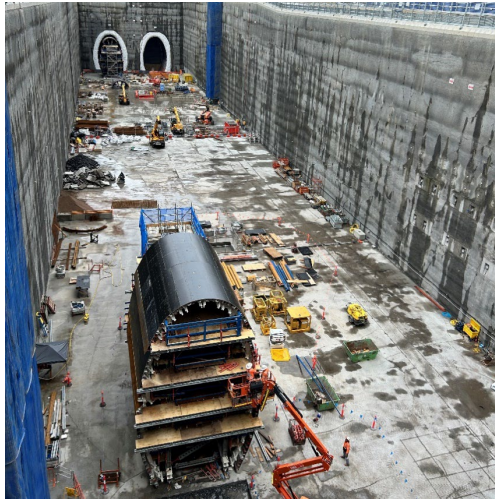


Figure 2.15: SOP Site – tunnel portal formwork construction

2.4 Endorsed Documents

There were no documents approved or endorsed during the reporting period.

2.5 Complaints

Three complaints were provided to the ER for February 2024. Following an investigation, one of these complaints was not related to the Sydney Metro project. The remaining complaints are summarised below:

- **Clyde Dive** – One complaint: The (29/2/2024) complaint was related to an increase in noise levels at night. Following an investigation the noise source was a water pump within the dive structure. The pump was required to keep the sump excavation dry for concrete works. In response to the complaint GLC place noise blankets around the pump. The ER has requested noise monitoring results for the pump operation.
- **WTP Tunnelling** – One complaint: The (15/2/2024) complaint related to a business in Silverwater complaining about the duration of the ground born noise from TBM 1 and 2. The business was updated on the TBM movements and was satisfied with the response.

2.6 Compliance

2.6.1 Incidents

No incidents considered to represent incidents as defined under the Project Approval were reported to or observed by the ER during the reporting period.

2.6.2 Non-compliance

No Non-Compliance Reports were provided to the ER or raised by the ER during the reporting period.

2.6.3 Audits

The fourth Independent Environmental Audit on the Sydney Metro West, Concept and Stage 1 SSI 10038 Approval commenced late February 2024.



2.7 Looking Forward – Core Focus Areas

GLC are managing their environmental risk and compliance adequately. Currently, the Clyde MSF site presents the highest environmental risk due to its spoil management, creek works and multiple site access points.

The core focus areas for the coming month are:

- The diversion of Duck and A'Becketts Creek is continuing. This work involves creating a new low flow channel linked with rock and backfilling the original creek alignment to create the high flow channel.
- The Rosehill Water Treatment Plant is currently unable to discharge off site, with treated water being reused by the TBMs. This presents a risk to the project if heavy rain is experienced by the project, however, the contractor has contingency plans in place.



3 PHASE G - EASTERN TUNNEL PACKAGE

The Sydney Metro West Eastern Tunnel Package is Stage 2 of the Sydney Metro West CSSI and is described as major civil construction works between The Bays and Sydney CBD, including station excavation at Pyrmont and Hunter Street and tunnel excavation between the Bays and Hunter Street. Stage 2 (SSI 19238057) was approved on the 24 August 2022.

The Environmental Representatives for the Sydney Metro West Eastern Tunnel Package are:

- Michael Woolley
- Maulik Bapodara
- Greg Byrnes
- Jo Robertson

The Eastern Tunnelling Package (ETP) is being delivered by John Holland CPB Ghella Joint Venture (JCG) with the contract being awarded in November 2022. Sydney Metro notified DPHI that the date of commencement of construction was 17 March 2023. JCG have received Environmental Protection Licence (EPL 21784) for the project.

3.1 Key Construction Related Activities During the Period

Works conducted during the reporting period included:

Project Wide:

- Pre-Construction Surveys
- Drilling of monitoring and geotechnical investigation boreholes
- CCTV investigations of sewer lines.

Pyrmont East:

- Segregation and load out of spoil/wastes.
- Use of the diesel-powered tower crane established on site during a previous reporting period
- Ongoing construction of boundary retaining walls
- Ongoing construction of the steel platform on top of the steel columns
- Excavation of some areas as required for works such as the eastern end of the capping beam along Union Street
- Pile cap removal of many piles along the Union Street Boundary.
- Operation of the ancillary facility in the parking lane on the south side of Union Street for site sheds.
- Installation of the sub-station in the eastern end of the site including FRP for concrete base
- Management of water accumulated on site after frequent rain events including use of sucker trucks.

Pyrmont West:

- Excavation; anchoring and FRP activities for footings for the acoustic shed.
- Ongoing construction of the retaining walls along Paternoster Row and Pyrmont Bridge Road.
- Load out of spoil wastes.
- Deliveries to the hardstand area on the driveway access to Pyrmont Bridge Road
- Management of water accumulated on site after frequent rain events including use of sucker trucks parked outside the site on Pyrmont Street.

Hunter Street West:

- Hazardous Materials assessments and removal
- Commencement of hard demolition of 9 Hunter Street (over 20 storeys). Waste delivered to load out zone through lift shafts.
- Investigations into the boundary wall between Skinners Hotel and 300 George Street
- Ongoing installation of scaffolding for various buildings
- Ongoing use of the basement load out zone for loading trucks and removal of demolition wastes through driveway to Hunter Street.

Hunter Street East:



- Activities inside the Bligh Street acoustic shed including ongoing excavation of the station cavern and various adits, turnback's, declines and ventilation shafts; stockpiling and load out of spoil. Use of air ventilation systems and other tunnelling support activities.
- Hazardous Materials assessments and removal
- Ongoing installation of scaffolding
- Completion of works to support planned hard demolition activities including construction of columns to support some building elements
- Use of the load out area at 28 O'Connell Street
- Commencement of some hard demolition works at plant rooms at the top of the buildings. Use of drop chute for removal of spoil to ground level and load out.

The Bays:

- Ongoing use of site offices
- Water treatment using the temporary WTP
- Ongoing works for the assembly of the Construction WTP
- Completion of cladding of the Segment Shed building
- Various earthworks to establish site levels, particularly within the former WCX areas
- FRP works for the slurry plant; haul road and laydown areas
- Works within the station box to prepare for launch of the TBMs including niche excavation and pours; and FRP for tunnelling launch supports. Delivery and storage on site of TBM launch supports.
- Construction of a new sump in the base of the station box. Construction of footings for a tower crane in the base of the station box.

3.2 Key Construction Activities Look Ahead

The following works are planned in March 2024:

- Ongoing activities as described above
- Utility investigations and relocations
- Further site establishment works at all sites
- Occasional rock hammering at the Pymont shaft sites
- Hard demolition to continue at 9 Hunter Street and may commence in full at Hunter Street East.

3.3 ER Inspections

Four ER inspections were conducted during the reporting period on each Tuesday of February. The following actions were raised during the month:

- Action relating to noise mitigation at 9 Hunter Street at the level of demolition. Discussions with the AA and JCG about these controls have continued.
- Provision of additional ERSED controls at the Bays near the WBPS drain area, noting that a number of controls were already in place.
- Cleaning of hardstand and review of ERSED controls near the slurry treatment plant
- Install noise mats to fill the gaps in the northern side of Level 19 of 9 Hunter Street facing Hunter Street.

Good practice was observed during pile break back works at Pymont East with noise blankets used to provide effective noise mitigation for the activity.

JCG were observed to be responsive to ER feedback during inspections. Some meetings were held with Sydney Metro and JCG to discuss the extent and use of noise mitigation at demolition sites in Hunter Street.



3.3.1 Photos



Figure 3.1 Pyrmont East: Ongoing installation of the steel platform.



Figure 3.2 Pyrmont East: Pile caps broken back on the piles along Union Street boundary



Figure 3.3 Pyrmont West: Anchor installation. Wall supports in place.



Figure 3.4 Pyrmont West: Construction of retaining wall along Paternoster Row and Pyrmont Bridge Road.



Figure 3.5 Hunter St West: Demolition of the core of building on Level 19



Figure 3.6 Hunter Street East: Loading zone at 28 O'Connell Street.



Figure 3.7 The Bays: Ongoing construction of the Slurry Treatment Plant



Figure 3.8 The Bays: TBM launch support structures being constructed in the base of the station box. Niches concreted.

3.4 Endorsed document/s

There were no documents approved or endorsed during the reporting period.

In accordance with CoA A32(d)iii the written statements endorsing documents identified in A14, A21, C1, C5 and C14 are provided in Appendix A (if relevant).

3.5 Complaints

Four complaints related to ETP were reported in a summary of complaints for February 2024 for Metro West. Two complaints were for Pymont and related to an increase in fumes from Pymont East; and impacts on general health. Two complaints were reported for Hunter Street and related to dust generated at Hunter Street West; and complaints of noise from tenants at Hunter Street East.

3.6 Compliance

3.6.1 Incidents

No incidents considered to represent Incidents as defined under the Project Approval were reported to or observed by the ER during the reporting period.

One Incident was reported by JCG under the John Holland Incident reporting system relating to works to investigate the nature of the shared wall between 300 George Street and the Skinners Hotel, a State heritage listed building. A small hole was made in the brickwork wall from 300 George Street. The other side of the wall was observed to be the Skinners Hotel, indicating the wall was a shared wall between the two buildings. Some damage was made to the wall of the Skinners Hotel building through the investigation. It was understood that heritage architects for JCG were reviewing the damage to determine its nature and extent, in order to classify the event under Conditions D4 and D8 of the Infrastructure Approval. This report had not been received by the end of the reporting period. JCG are further reviewing demolition approaches in light of this outcome.

3.6.2 Non-compliance

JCG reported a Non Compliance with Condition D73 after some trucks were reported to have not followed approved haulage routes as had already been reported to DPPI in the CPAS 6 Monthly Monitoring Report issued in December 2023. The detail of the reporting in the CPAS is considered to be proactive by JCG, with clear responses taken to address the issues raised as defined in the report.



3.6.3 Audits

The second IEA commenced during the reporting period and continued in early March.

3.7 Looking Forward – Core Focus Areas

In the next reporting period, the ER Team will be focused on:

- General monitoring of construction activities; including site establishment works at the Bays
- Noise and dust associated with the ongoing hard demolition activities at Pymont West; Pymont East and Hunter Street West
- Noise associated with excavation of the shafts at the Pymont sites
- Potential for tracking of dirt at the various demolition sites and at the Bays



4 PHASE H - WESTMEAD UTILITY RELOCATION

The Sydney Metro West Phase H – Westmead Telstra and Jemena Gas Relocation involves the installation of new utility services around the new Sydney Metro Station at Westmead via Hawkesbury, Bailey and Hassell Streets.

The Environmental Representatives for the Sydney Metro West Eastern Tunnel Package are:

- Greg Byrnes
- Michael Woolley
- Maulik Bapodara

The Sydney Metro West Phase H – Westmead Telstra and Jemena Gas Relocation is being delivered by Quickway with the contract being awarded in August 2023.

No EPL will be required for this phase of Sydney metro West.

4.1 Key Construction Related Activities During the Period

The majority of works undertaken in February were completed outside standard construction hours due to ROL requirements. Construction works included:

- Trenching and conduit install on Bailey and Hassell streets
- Silverwater Compound operation
- Traffic diversions

4.1 Key Construction Activities Look Ahead

Trenching and conduit installation, including associated traffic changes.

4.2 ER Inspections

One ER inspections was completed during the reporting period. One action was raised for the segregation of waste material and quarry materials at the Silverwater compound site.

4.2.1 Photos



Figure 4.1: Westmead Utility Works – Silverwater Compound waste and sand stockpiles



Figure 4.2 Westmead Utility Works: Silverwater Compound tree protection.

4.3 Endorsed Document/s

One document was endorsed by the ER during the reporting period:



- Revised OOHW-003 – Trenching Works, Various Locations Rev 4 (21/2/2024)

4.4 Complaints

One complaint was provided to the ER for February 2024 for the Westmead Utility Relocation Works. Following an investigation, this complaint was not related to the Sydney Metro project.

4.1 Compliance

4.1.1 Incidents

No incidents considered to represent Incidents as defined under the Project Approval were reported to or observed by the ER during the reporting period.

4.1.2 Non-compliance

No Non-Compliance Reports were provided to the ER or raised by the ER during the reporting period.

4.1.3 Audits

The fourth Independent Environmental Audit on the Sydney Metro West, Concept and Stage 1 SSI 10038 Approval commenced late February 2024.

4.2 Looking Forward – Core Focus Areas

The core focus areas for the coming month are:

- Work outside standard construction hours
- Road cleaning at the end of each shift.



5 SYDNEY METRO RETAINED OBLIGATIONS AND OTHER ACTIVITY

The Environmental Representatives for the Sydney Metro Retained Obligations and other Activities are:

- Jo Robertson
- Greg Byrnes

The Sydney Metro Retained Obligations and other Activities is being delivered by Sydney Metro with various sub-contractors delivering the works. These works do not require an EPL.

5.1 Key Construction Activities During the Period

The ER is not aware for other Sydney Metro managed construction activities during the period.

5.2 Key Construction Activities Look Ahead

The ER is not aware for other Sydney Metro managed construction activities during the period.

5.3 ER Inspections

There were no ER inspections of this work during the reporting period.

5.3.1 Photos

None

5.4 Endorsed Document/s

No Sydney Metro documents were endorsed during the reporting period.

5.5 Complaints

No complaints have been reported to the ER in relation to the investigations previously conducted for Sydney Metro.

5.6 Compliance

5.6.1 Incidents

No incidents have been reported to the ER in relation to the investigations previously conducted for Sydney Metro.

5.6.2 Non-compliance

No non compliances have been reported to the ER in relation to the investigations previously conducted for Sydney Metro.

5.6.3 Audits

No audits were conducted during the reporting period on this package or works.



6 STATEMENT OF LIMITATIONS

Healthy Buildings International (HBI) has prepared this report in accordance with the requirements of Condition A30(k) of the Sydney Metro West, Concept and Stage 1 SSI 10038 Approval (11 March 2021), and Condition A32(k) of the Sydney Metro West – The Bays to Sydney CBD SSI 19238057 Approval (24 August 2022).

The report is for the sole purposes of Department of Planning, Housing and Infrastructure (DPHI) and Sydney Metro. It has been prepared based on generally accepted practices and standards at the time it was prepared. No other warranty, expressed or implied, is made as to the professional advice included in this Report. This report did not assess any aspects relating to safety.

Where the Report indicates that information has been provided to HBI by third parties, HBI assumes no liability for any inaccuracies in or omissions to that information.

This Report was prepared based on the conditions encountered and information reviewed at this time. HBI disclaims responsibility for any changes that may have occurred after this time.

This Report should be read in full. No responsibility is accepted for use of any part of this report in any other context or for any other purpose or by third parties. This Report does not purport to give legal advice. Legal advice can only be given by qualified legal practitioners.

Except as required by law, no third party may use or rely on this Report unless otherwise agreed by HBI in writing. Except as specifically stated in this section, HBI does not authorise the use or findings of this Report by any third party

To the extent permitted by law, HBI expressly disclaims and excludes liability for any loss, damage, cost or expenses suffered by any third party relating to or resulting from the use of, or reliance on, any information contained in this Report. HBI does not admit that any action, liability or claim may exist or be available to any third party.



HBI Healthy Buildings International Pty Ltd

7 APPENDIX A – ER DOCUMENT ENDORSEMENT RECORDS (ETP ONLY)