

[REDACTED]
[REDACTED]
Department of Planning, Housing and Infrastructure
Locked Bag 5022
PARRAMATTA NSW 2124

7 April 2024
Ref:201209-ER_DPHI-March 2024

Dear [REDACTED]

RE: Sydney Metro - Sydney Metro Western Sydney Airport SSI 10051 – ER Monthly Report for March 2024

Healthy Buildings International (HBI) submits this report to the Secretary in accordance with:

- Condition A32 (k) of the Sydney Metro Western Sydney Airport, SSI 10051 Approval (23 July 2021)

The attached summary details the key activities undertaken by Environmental Representatives for Sydney Metro Western Sydney Airport for the month of March 2024.

Yours sincerely

[REDACTED]
Environmental Representative

Cc:

Sydney Metro: [REDACTED]
[REDACTED]

DPHI: Major Projects Portal

Enclosed:

ER Endorsement of AEW FSM CEMP R02 150324





Table of Contents

1. Advanced and Enabling Works (AEW)	3
2. Station Boxes and Tunnelling (SBT)	6
3. Surface and Civil Alignment Works (SCAW)	10
4. Stations, Systems, Trains, Operations and Maintenance Package (SSTOM)	17
5. Statement of Limitations	21



1. Advanced and Enabling Works (AEW)

Contract Package	Environmental Representative/s
Advanced and Enabling Works (AEW)	[REDACTED]
Key Construction Activities During the Period	
<ul style="list-style-type: none"> ▪ St Marys Footbridge (FSM): <ul style="list-style-type: none"> ○ Piling commenced and continued on platforms ○ Lifting and installation of the new overhead wiring structures ○ Load out of pile spoil 	
Key Construction Activities Look Ahead	
<p>The Construction activities planned for the upcoming period for the Advanced Enabling Works (AEW) comprise of:</p> <ul style="list-style-type: none"> ▪ St Marys Footbridge: <ul style="list-style-type: none"> ○ Continuation of piling works ○ Material loadout ○ Planning for weekend 44 works 	
ER Inspections	
<p>There was one (1) inspection of the St Marys Station Footbridge contract undertaken by Mr [REDACTED] in March 2024 (ER inspections are on a fortnightly cycle weather and health permitting).</p>	
St Marys Footbridge	
<ul style="list-style-type: none"> ▪ 16/03/2024 - Key points/ issues raised during this inspection were as follows: <ul style="list-style-type: none"> ○ The works conducted over WE38 were undertaken with a high level of diligence ○ Tracking risks were managed through covering broken asphalt and providing a carpeted walking pathway ○ A focus on containing spoil and turbid water resulted works being undertaken with minimal environmental risk 	
Photos	
St Marys Footbridge	
	
<p>Compound - The crane lifting the new overhead wiring structure from the compound to the platform.</p>	<p>Compound - A galvanised fence has been placed between the footpath and the garden bed, protecting the plants and side of the building</p>



Compound - Temporary road plates have been placed over the cracked pavement to reduce mud tracking until the permanent solution is constructed.



Platform - A red carpet has been provided to identify the walkways and reduce the amount of mud tracked by foot traffic.



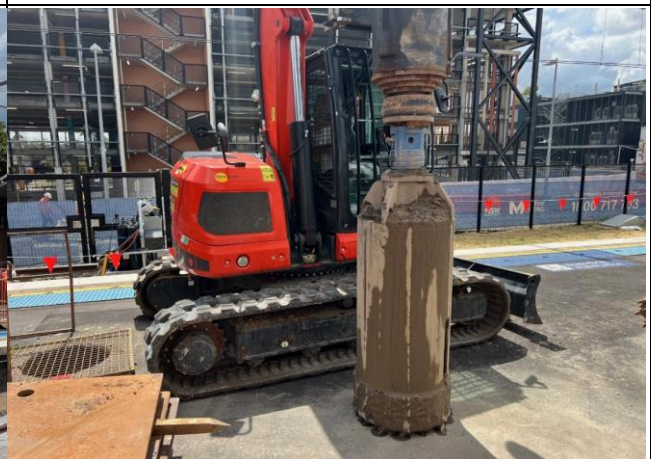
Platform - Pile spoil is temporarily stored on the platform prior to being loaded out.



Platform - Geofabric is placed on the ballast to capture any material spillage and reduce the risk of ballast becoming fouled.



Platform - A vac truck was used for NDD tasks, minimising turbid water spillage risk.



Platform - The piling rig is stored in a relatively clean condition.

Endorsed Document/s

The following documents were endorsed/approved by the ER (Mr ██████████)

- Western Sydney Airport Advanced and Enabling Works, Footbridge St Marys Construction Environment Management Plan 13/03/24 (rev 2). Endorsed on 15/03/24



<p>The following documents were provided for information or reviewed with comments provided to Sydney Metro.</p> <ul style="list-style-type: none">▪ Out-of-hours work application form- SM-WSA Weekend 38 (WE38), 16 – 18 March 2024 Footbridge St Marys- Site Early Works 06/03/24 (rev 2)
<p>Complaints / Incidents / Non-compliance</p> <p>No non-compliances or incidents were reported to or identified by the ER for the period.</p> <p>No complaints were received during the period.</p>
<p>Audits (specific to packages reported in this report)</p> <p>Independent Environmental Audit (IEA) - RFI received and responded to by the project.</p>
<p>Looking Forward – Core Focus Areas</p> <p>Works occurred over weekend 38 (16 and 17 March 2024). The works were well planned and executed with no environmental incidents or monitoring exceedances. The FSM delivery contractor is now planning for the next possession over weekend 44 (27 and 28 April 2024). The main risks that the ER has requested the contractor plan for, amongst all aspects in the CEMP, include:</p> <ul style="list-style-type: none">• Mud tracking,• Heavy vehicle routes,• Out of hours noise, and• Spoil management. <p>ER Closing Comments:</p> <p>Project leadership and commitment remains to be effective and this was clearly demonstrated during weekend 38. The ER intends to continue an oversight of the planning works for weekend 44.</p>

2. Station Boxes and Tunnelling (SBT)

Contract Package	Environmental Representative/s
Station Boxes and Tunnelling (SBT)	[REDACTED]
Key Construction Activities During the Period	
<ul style="list-style-type: none"> ▪ St Marys: <ul style="list-style-type: none"> ○ No SBT activities this period ▪ Claremont Meadows Services Facility: <ul style="list-style-type: none"> ○ Water treatment plant operating. ○ Sediment basins operational. ○ Pre-cast of TBM support blocks for St Marys TBM retrieval. ○ Storage of surplus construction materials from other northern sites ○ Cross passage spoil removal ○ Tunnel segment transfer from Orchard Hills and crane to shaft during Standard Construction Hours ▪ Orchard Hills: <ul style="list-style-type: none"> ○ Spoil and topsoil storage. ○ Operation and maintenance of ERSED controls. ○ Pre-cast tunnel segment storage in the north. ○ TBMs tunnelling progressed into The Kingsway parklands at St Marys ○ Tunnel segment delivery ○ Processing and storage of tunnel spoil. ○ Tunnel Spoil haulage offsite ○ Grout plant operation. ○ Water treatment plant operation and disposal to trade waste at Claremont Meadows. ▪ Aerotropolis: <ul style="list-style-type: none"> ○ No SBT activities this period ▪ Bringelly Services Facility: <ul style="list-style-type: none"> ○ Water treatment plant Operation ○ Storage of surplus construction materials from other southern sites. ○ Installation of support blocks and structure for TBM traverse ○ TBMs Eileen and Peggy traverse complete. ○ Tunnel blinding rings and traverse support structure removal and installation of ventilation and spoil conveyors. 	
Key Construction Activities Look Ahead	
<ul style="list-style-type: none"> ▪ St Marys: <ul style="list-style-type: none"> ○ Preparatory activities for installation of retrieval crane and re-establishment to western end of station box commencing early April. ○ SBT activities (TBM retrieval) anticipated to commence early May 2024 ▪ Claremont Meadows Services Facility: <ul style="list-style-type: none"> ○ Continue erosion and sediment controls operation and maintenance. ○ Continue Water Treatment Plant operation and maintenance. 	



- Storage of surplus construction materials from other northern sites.
- Commencement of tunnelling support activities, including concrete deliveries outside Construction Hours.
- Orchard Hills:
 - Activities anticipated for the upcoming period are generally consistent with those for this period.
- Aerotropolis:
 - Preparatory activities for installation of retrieval crane and re-establishment to northern areas of station box commencing early April.
 - SBT activities (TBM retrieval) anticipated to resume May 2024
- Bringelly Services Facility:
 - Continue Erosion sediment controls operation and maintenance.
 - Operation of WTP.
 - Tunnelling support activities (concrete deliveries and cross passage spoil) currently under assessment as part of a Consistency Assessment / Environmental Review.

ER Inspections

There were two (2) ER Inspections conducted on 14/3/24 and 25/3/24 by Mr [REDACTED]

Key points/ issues raised during the inspections were as follows:

- Sites were generally well managed with maintenance of and adjustments to erosion and sediment controls ongoing at the sites.
- The good condition of the Orchard Hills internal haul road and of Kent Rd from the SBT HV access was being maintained and tracking was negligible.
- At Orchard Hills TBM potable water supply pipe was noted to have developed a minor leak at a joint. on concrete hardstand with a gradient towards the site holding sumps. CPBG to endeavour to rectify the leak during TBM Easter maintenance pause to save water.
- At Orchard Hills CPBG to empty southern water holding sumps and ensure that adequate capacity is maintained to receive and hold sediment loaded stormwater from upgradient areas during unpredictable weather events.
- At Claremont Meadows Condition of internal roads is good, with negligible tracking noted from HV access gate at Gipps Rd.
- At Bringelly CPBG to orient absorptive surface of southern elevation of noise blanket structure towards works.

ER inspections are on a fortnightly cycle. Inspections of St Marys and Aerotropolis to resume early April.

Photos



Orchard Hills – Weeding well advanced .



Kent road at site access – Negligible tracking.



Orchard Hills view south – Internal haul road to exit apron in good condition.



Orchard Hills view north – Tunnel spoil storage area continues to be well managed.



Orchard Hills – Automated wheel wash.



Orchard Hills south – CPBG to empty water holding sumps to allow for unpredictably intense rain events.



Orchard Hills south – CPBG to endeavour to rectify potable water leak during TBM Easter maintenance.



Claremont Meadows shaft view north – Tunnel segment loading into tunnel.



Claremont Meadows shaft view north – Tunnel segment delivery from Orchard Hills.



Claremont Meadows north west – Tunnel segment storage.



Claremont Meadows western areas – Pre-cast of TBM support blocks for St Marys TBM retrieval.



Claremont Meadows – Negligible tracking noted from southern site access onto Gipps Road.



Bringelly Facility view southwest – CPBG to orient absorptive surface of noise blankets towards works.

Bringelly facility - Installation of tunnel ventilation and spoil conveyor boosters.

Endorsed Document/s

The following documents were endorsed/approved by the ER:

- Nil this period.

The following documents were provided for information or review as applicable:

- February Monthly Monitoring Reports comprising Dust (real-time), Noise and Surface Water.
- Detailed Noise and Vibration Impact Statement Addendum - Claremont Meadows (Rev 3.0), Revised Methodology letter (Renzo Tonin 20 March 2024) assessing the noise impacts from the proposed out-of-hours (OOH) TBM support works with revised plant and associated noise mitigation methodology.

Complaints / Incidents / Non-compliance

No Non-compliances with the Approval were raised by or reported to the ER this period. There were no incidents of note identified by or reported to the ER this period.

Seven (7) complaints were reported to the ER. One related to property damage at Bringelly due vibration Six (6) related to tunnelling and Orchard Hills. Of the six, three related to cumulative air quality and hv movement /noise cumulative impacts and drainage along the council managed side of Kent Road, one related to tunnelling (TBM) noise, one related to worker/driver behaviour, and one related to alleged tracking/spill from spoil haulage vehicles near Penrith Lakes disposal site.

The complaints above are under investigation or review by Sydney Metro and CPBG, as detailed in the register.

Audits (specific to packages reported in this report)

- Independent Environmental Audit (IEA) - RFI received and responded to by the project.

Looking Forward – Core Focus Areas

Risks now relate to upcoming tunnel support activities at Claremont Meadows and Bringelly, and OOH and Cumulative impacts with SSTOM activities at St Marys. Of note are:

- management of delivery/haulage vehicles and attendant cumulative impacts as SCAW activities off Lansdowne Rd are ongoing and SSTOM activities ramp-up; and
- OOH noise management at Claremont Meadows for concrete pumping and tunnel segment crange into service shaft.
- Diesel powered tower crane erection and subsequent use at St Marys.

ER Closing Comments:

The contractor continues to be receptive to ER requests for improvements and proactive in planning of works to limit environmental impacts.

3. Surface and Civil Alignment Works (SCAW)

Contract Package	Environmental Representative/s
Surface and Civil Alignment Works (SCAW)	[REDACTED]
Key Construction Activities During the Period	
<ul style="list-style-type: none"> ▪ Patons Lane <ul style="list-style-type: none"> ○ Sandstone import over northern tributary stream culvert ○ Weed spraying continuing ○ Northern tributary culvert and fauna crossing construction complete ○ Sandstone fill placement over the top of the culvert and Blaxlands Creek ○ Preparation for installation of segments on the viaduct ▪ SMF <ul style="list-style-type: none"> ○ Drainage works from SSTOM to SCAW ○ PS105 asbestos encapsulation is complete ○ Additional unsuitable material is being added to PS105 ▪ Defence Land <ul style="list-style-type: none"> ○ Additional clearing complete ○ Fauna crossing complete ○ Viaduct segments are being placed on site for installation ○ All ACM has been removed to PS105 ▪ Luddenham Station <ul style="list-style-type: none"> ○ Construction of Luddenham Rd roundabout is complete except for the wearing course ○ Structural station works continue. ▪ Luddenham Road South <ul style="list-style-type: none"> ○ Placement of viaduct segments is complete with parapet walls being installed ○ Ongoing earthworks ▪ M12 to Cosgrove's Creek <ul style="list-style-type: none"> ○ Sandstone is being used to build the formation. ○ Gantry is being disassembled from this area ▪ Elizabeth Drive <ul style="list-style-type: none"> ○ Sandstone delivery is complete south of Elizabeth Drive ○ Drainage arrangements are being developed to cater for M12 discharge water 	
Key Construction Activities Look Ahead	
<ul style="list-style-type: none"> ▪ Patons Lane: <ul style="list-style-type: none"> ○ Rehabilitation works will continue along the alignment ○ Sandstone import ongoing ○ Fill activities and detailed earthworks ▪ Stabling and Maintenance Facility (SMF) Orchard Hills: <ul style="list-style-type: none"> ○ Structures works will continue at Blaxland Creek ○ Culvert and fauna crossing works completion at the unnamed tributary ○ Unsuitable material will be added to the containment cell at PS105 ▪ Defence Land: 	



- Drainage and finishing works ongoing
- Sandstone filling and compaction will continue
- Viaduct segment placement will commence
- Luddenham Station:
 - Wearing course of the roundabout is all that remains
- Luddenham Road South:
 - Precast parapets for the viaduct will continue to be installed
 - Drainage and stabilisation works will continue
- M12 to Cosgroves Creek:
 - Viaduct finishing works to continue across Cosgrove’s Creek
 - Finishing earthworks to continue
 - Construction of the 30 ML basin continues which will ultimately be a flood mitigation basin.
- Elizabeth Drive:
 - Discussions with M12 are ongoing and the CPBUI steering committee will present drainage options to Sydney Metro
 - Permanent alignment drainage works ongoing

ER Inspections

There were two (2) ER Inspections on 7th and 21st March 2024:

Key points/ issues raised during these inspections were as follows:

- The interface between SCAW and M12 is progressing well, the CPB steering committee is considering different options to resolve the issue and will propose these to Sydney Metro
- ERSED controls were of a good standard and were being revised during the inspection
- The site was tidy with housekeeping being of a high standard
- Viaduct works have progressed well with reuse and disposal facilities being used and maintained
- Many of the permanent drainage structures have been lined with jute mat and sprayed with hydromulch which is starting to germinate
- Lansdowne Rd now has a full time street sweeper and dust is minimised through cleaning the internal sealed haul road

ER inspections are on a fortnightly cycle weather and health permitting.

Photos



M12 Interface - The existing basin has enough capacity to capture SCAW’s licenced rainfall amount



M12 Interface - Design options are ongoing within the CPB steering committee to resolve how M12 water will be handled



M12 Interface - The existing basin has enough capacity to capture SCAW's licenced rainfall amount



M12 Interface - The bund on top of the southern culvert is a good idea and will need to be monitored regularly



EDR Entrance - A new sediment basin has been established that can take the SCAW runoff while keeping the larger basin dry



Luddenham North - The viaduct works are complete, until the last gantry establishment will complete the viaduct



Luddenham roundabout - Illegal dumping has been detected by CPBUI and reported to Sydney Metro



Defence - The upstream side of the unnamed creek is in the process of having its ERSED controls refreshed



Defence - Drainage is nearing completion, with jute mat installed and spray grass germinating



Defence - The fauna crossing in the defence alignment is complete



Defence - Structures works are ongoing in the Defence site



Defence - Topsoil is being loaded out from the southern Defence site, dust generation was minimal



PS105 - Unsuitable material is being stockpiled on top of the containment cell at PS105



Unnamed Tributary - Works continue to finalise the scour rock at the culvert



Unnamed Tributary - The fauna crossing is complete



Lansdowne Rd - Minor dust levels have been tracked onto Lansdowne Rd, CPBUI to ensure a sweeper is available when required



Lansdowne Rd – Following ER inspection on 07/03/24 a street sweeper is stationed full time at the SCAW Lansdowne Rd exit



Lansdowne Rd - Many cigarette butts were observed to be thrown in the gutter, CPBUI reinforced smoking policy and provided additional bins. Cigarette butts were not present during ER inspection on 21/03/24



Lansdowne Rd - An existing sump is being used to retain water from inundating the neighbouring property



Lansdowne Rd - The colourbond fencing agreed with the resident has been installed



Cosgrove's Creek - Parapets are being installed along the viaduct over Cosgrove's Creek



Cosgrove's Creek - The works in the rock mattress lined drain are ongoing



Luddenham South - Small sumps are utilised across the site to minimise construction water runoff



Luddenham South - The viaduct works are complete at Luddenham South

Endorsed Document/s

The following documents were endorsed/approved by the ER:

- Nil

The following documents were provided for information or reviewed:

- DNVIS 4 Warragamba Pipeline Works, Luddenham Roundabout Works and Full Viaduct Alignment Cosgroves Creek to Patons Lane (rev D), provided to ER 28/03/24
- CEMP Western Sydney Airport – Surface and Civil Alignment Works, Main Excavation and Viaduct Works (rev 4) provided to ER on 28/03/24

Complaints / Incidents / Non-compliance

No non-compliances were reported to or identified by the ER for the period.

No incidents of note were reported to the ER during the period:

One (1) complaint was reported to the ER during the period. A stakeholder reported a heavy vehicle driver not adhering to the road rules resulting in a near miss collision. The SCAW heavy vehicle manager and community place manager were able to identify the registration and driver and discussed this incident with the driver's employer. A toolbox talk was also provided to all heavy vehicle drivers.



Audits (specific to packages reported in this report)
<ul style="list-style-type: none">▪ Independent Environmental Audit (IEA) - RFI received and responded to by the project.
Looking Forward – Core Focus Areas
<p>Discussions between SCAW and M12 have continued on a weekly basis and a resolution to accepting M12 construction water to the SCAW site is being progressed by the CPBUI steering committee. The ER has been pleased with the diligence of the CPBUI team which has seen actions raised during the ER inspections being closed out earlier than the agreed timeframes. As the gantry is moved to different sections of the viaduct, out of hours operations and site setup will become a focus point.</p> <p>ER Closing Comments: Establishing an integrated approach towards developing ERSED plans accounting for contractor interfaces will become important as the project moves towards completion. The SCAW project has engaged their CPESC to revise their ERSED plans. The positive attitude towards accepting actions from ER inspections and achieving faster closeout times than agreed is very encouraging.</p>



4. Stations, Systems, Trains, Operations and Maintenance Package (SSTOM)

Contract Package	Environmental Representative/s
Stations, Systems, Trains, Operations and Maintenance Package (SSTOM).	[REDACTED]
Key Construction Activities During the Period	
<ul style="list-style-type: none"> ▪ St Mary’s Station (STM): <ul style="list-style-type: none"> ○ Portion handed back to SBT for TBM retrieval ○ Installing temp draining around site, the foundation works for base slabs including steel fixing. ○ Production piling completed ○ Pile break back continued ▪ Orchard Hills Station (ORH): <ul style="list-style-type: none"> ○ Site establishment works continued ○ Production piling commenced ○ Preparation works for the concrete batch plant commenced ▪ Stabling and Maintenance Facility (SMF): <ul style="list-style-type: none"> ○ Construction of the site compound and light vehicle car park ongoing ○ Deliveries ongoing from Western Tunnelling Package (Metro West) for backfill of Pad ○ Haul road revision completed ○ ERSED sumps installed for water reuse onsite ▪ Luddenham Station (LUD): <ul style="list-style-type: none"> ○ Removal of redundant drainage completed and addition of drainage controls ongoing ▪ Aerotropolis Core (AEC): <ul style="list-style-type: none"> ○ Site establishment works continued ○ Site traffic route alignment ongoing, LV car park completed ○ Piling ongoing ○ Portion handed back to SBT for TBM retrieval 	
Key Construction Activities Look Ahead	
<ul style="list-style-type: none"> ▪ St Mary’s Station: <ul style="list-style-type: none"> ○ Waterproofing and crane pad installation to commence. ○ Tower crane erection to occur ○ Piling Rig noise monitoring to occur during the off-hire process. ▪ Orchard Hills Station: <ul style="list-style-type: none"> ○ Box sump and drainage works to commence. ○ Continuing installing ESC ○ Piling to continue ○ Station box dive access – portion handed from SCAW to SSTOM ▪ Stabling and Maintenance Facility: <ul style="list-style-type: none"> ○ Site establishment for offices to continue ○ Ongoing importation of material to continue. 	



- Connection of 132kv power to commence. Potentially early handover.
- Additional area for stockpiling. (SCAW handover to SSTOM)
- Luddenham Station
 - Piling to commence (~100 piles)
 - Car park extended and resurfaced
- Aerotropolis Core:
 - Site establishment works
 - Realignment of drains and reapplication of hydro-mulch
 - Potential for additional piling rig to be mobilised
 - Tower crane to be constructed

ER Inspections

There were two ER Inspections, on 12 and 26 March 2024.

Key points/ issues raised during these inspections were as follows:

- Sites were generally managed well with minimal sediment tracking observed from the Orchard Hills Concrete batch plant and minor tracking at Saint Mary’s (noting that the wheel wash was deactivated)
- Weed maintenance continued to be raised across all sites as an action. Onboarding of a weed contractor remained an open action.
- Minor maintenance of onsite erosion and sediment controls is an ongoing requirement for Park life, noting rain events throughout the month.
- Orchard Hills –installation of internal erosion and sediment controls had commenced, noting that the reshaping of the western batter had commenced for the extension of the crane haul road
- Luddenham – The crossing of the swale had additional erosion controls installed and the site team had engineered a solution to remove the earth bund and will install a shipping container bridge (good outcome).
- Aerotropolis Core – The LV haul road had been reshaped after discussions with the CPESC to redirect site water to the sediment basin, instead of through sediment fences adjacent to the clean water diversion.
- Aerotropolis Core –Additional ERSED controls were required for the haul road crossing of the clean water swale.

Photos



STM – Wheel wash was deactivated. PLM reactivated when raised as a site action by the ER.

STM – Minor tracking from station box



ORH –Erosion and sediment controls installed on northern batter. Installation of controls was ongoing



ORH –Reshaping of the western batter was ongoing. Topsoil stripping and reshaping for the concrete batch plant had commenced



ORH –Sediment tracking from the concrete batch plant earthworks



SMF – Installation of water discharge to swale from the office compound.



SMF – Construction of a water sump had been completed for storage of additional water for reuse onsite.



SMF – Water truck refilling from sump



LUD –It was noted that additional erosion and sediment controls at the crossing of the swale were installed. PLM has engineered a solution to remove the bund and will install a shipping container bridge.



AEC – It was noted that the light vehicle road and car park had been constructed



<p>AEC – It was noted that the LV road had been regraded to flow into the sediment basin. Additional erosion controls were required for the clean water diversion crossing.</p>	<p>AEC – It was noted that piling works had commenced.</p>
<p>Endorsed Document/s</p>	
<p>No documents were endorsed/approved by the ER:</p> <p>The following documents were provided for information or reviewed with comments provided to Sydney Metro:</p> <ul style="list-style-type: none"> ▪ Environmental Review - Aerotropolis Overland Pipeline for Water Treatment Plant Discharges ▪ Environmental Review - Kent Road Watermain 	
<p>Complaints / Incidents / Non-compliance</p>	
<p>No new non-compliances and or incidents of note were reported to the ER during this period.</p> <p>Three complaints were reported to the ER during the period. All complaints were from Saint Marys.</p> <p>One complaint was received via the EPA concerning dust One complaint concerning worker behaviour (likely not related to Sydney Metro or PLM staff) One complaint was for property damage and passed onto SBT</p>	
<p>Audits (specific to packages reported in this report)</p>	
<p>Independent Environmental Audit (IEA) WSA 4 (SSTOM 1).</p>	
<p>Looking Forward – Core Focus Areas</p>	
<p>The focus is on the implementation of the CEMP and sub-plans, with a particular focus on erosion and sediment controls and sediment tracking.</p> <p>ER Closing Comments: It is noted that erosion and sediment controls are being rolled out at Orchard Hills. It is noted that as additional permanent staff are starting on the project, risks are starting to decrease.</p>	

5. Statement of Limitations

Healthy Buildings International (HBI) has prepared this report in accordance with the requirements of Condition A32 (k) of the Sydney Metro Western Sydney Airport, Concept and Stage 1 SSI 10051 Approval (23 July 2021). The report is for the sole purposes of the Department of Planning, Housing and Infrastructure (DPHI) and Sydney Metro. It has been prepared based on generally accepted practices and standards at the time it was prepared. No other warranty, expressed or implied, is made as to the professional advice included in this Report. This report did not assess any aspects relating to safety.

Where the Report indicates that information has been provided to HBI by third parties, HBI assumes no liability for any inaccuracies in or omissions to that information.

This Report was prepared based on the conditions encountered and information reviewed at this time. HBI disclaims responsibility for any changes that may have occurred after this time.

This Report should be read in full. No responsibility is accepted for use of any part of this report in any other context or for any other purpose or by third parties. This Report does not purport to give legal advice. Legal advice can only be given by qualified legal practitioners.

Except as required by law, no third party may use or rely on this Report unless otherwise agreed by HBI in writing. Except as specifically stated in this section, HBI does not authorise the use or findings of this Report by any third party

To the extent permitted by law, HBI expressly disclaims and excludes liability for any loss, damage, cost or expenses suffered by any third party relating to or resulting from the use of, or reliance on, any information contained in this Report. HBI does not admit that any action, liability or claim may exist or be available to any third party.



HBI

Healthy Buildings International Pty Ltd

A.C.N. 003 270 693

A.B.N. 39 003 270 693

Suite 2.06, Level 2
29-31 Solent Circuit
Norwest NSW 2153

Tel: 61 (02) 9659 5433
e-mail: hbi@hbi.com.au
Web:

www.hbi.com.au

15 March 2024

██████████
Director Sustainability Environment & Planning SMWSA
Sydney Metro
Transport for NSW
PO Box K659
HAYMARKET NSW 1240

Ref: 201209_Footbridge St Marys CEMP_Rev02

Dear ██████████

RE: Endorsement of the Sydney Metro Western Sydney Airport, Advanced and Enabling Works, Footbridge St Marys Construction Environmental Management Plan, Rev 02

Thank you for providing the following document for Environmental Representative (ER) review and approval in accordance with MCoA A32(j) of the Sydney Metro Western Sydney Airport project (SSI – 10051 July 23, 2021):

- *Sydney Metro Western Sydney Airport – Advanced and Enabling Works, Footbridge St Marys Construction Environmental Management Plan Revision 02 dated 13/03/2024 (CEMP Rev 02).*

As an approved ER for the Sydney Metro Western Sydney Airport project, I have reviewed the following proposed minor amendments in the CEMP Rev 02:

- All sections including definitions – Changed DPIE/DPE to DPHI
- General - General corrections including typographical errors and expression
- Attachment M – Updated to include all Minor Ancillary Facilities
- Attachment O – Updated to reflect the current state of compliance
- Attachment P – Included a Water Reuse Strategy.

It is noted that:


- Previous versions of the document have been reviewed and updated following comments from the ER
- Sydney Metro and Transport for New South Wales have also reviewed and commented on the document

Based on the information reviewed, in my opinion, the proposed changes constitute a minor amendment pursuant MCoA A32 (j). Accordingly, as an approved ER for the Sydney Metro Western Sydney Airport project, I approve the amended CEMP Rev 02.

The Project is reminded to ensure the most recently approved CEMP is made publicly available on the Project's website.

Yours sincerely




Environmental Representative – Sydney Metro Western Sydney Airport