

Notification – Waterloo Station

March 2024

Sydney Metro is Australia’s biggest public transport project.

Services started in May 2019 in the city’s North West with a train every four minutes in the peak. Metro rail will be extended into the CBD in 2024, with new metro railway stations at Crows Nest, Victoria Cross, Barangaroo, Martin Place, Gadigal and Waterloo and new metro platforms at Central, and then onto Bankstown in 2025.

The new Waterloo integrated station development includes construction of the new Waterloo metro station by John Holland, while a joint venture between John Holland and Mirvac will deliver the Waterloo Metro Quarter, including buildings above and next to the station.

Raglan and Wellington Street partial road closure

From **7am Monday 25 March to 6pm Saturday 6 April 2024** there will be a partial road closure on both Raglan and Wellington Street, between Botany Road and Cope Street. Raglan Street partial closure will continue until **6pm Saturday 1 June 2024**. The road closure will be in place 24/7 for construction staging and safety purposes, while construction work will be limited to standard construction hours (**Standard construction hours are Monday to Friday, 7am to 6pm and Saturday 8am to 6pm.**)

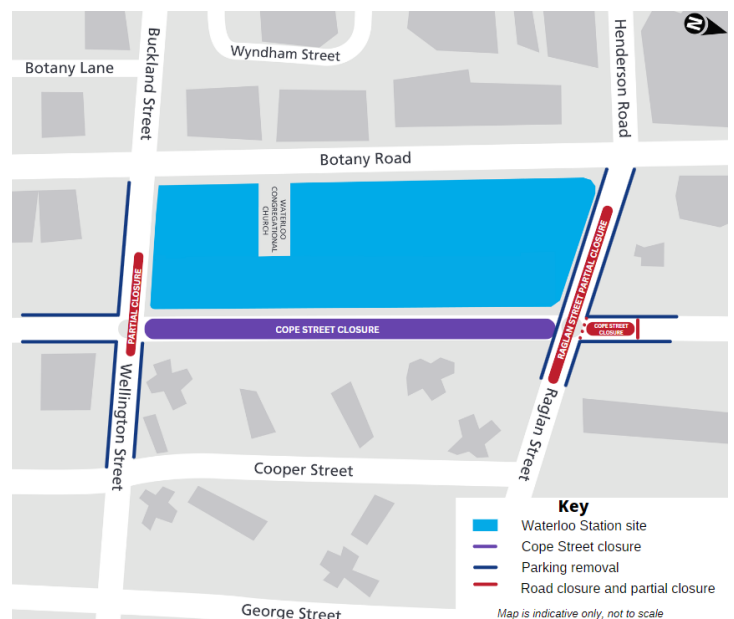
This partial road closures are required to complete water upgrade works and civil works on Raglan and Wellington Streets for the new intersections. These works include the preparation and construction of installation of a new water drainage, rain gardens, new road surfacing, curbs, wheelchair ramps, sidewalks, and planter boxes.

While the closures are in effect, road users can continue to travel in both the eastbound and westbound directions. However, turning left or right from Raglan Street onto Cope Street will not be possible. Drivers wishing to access Cope Street will need to take a detour via Pitt Street.

Please refer to the map over the page for more information on the changes and parking removal.

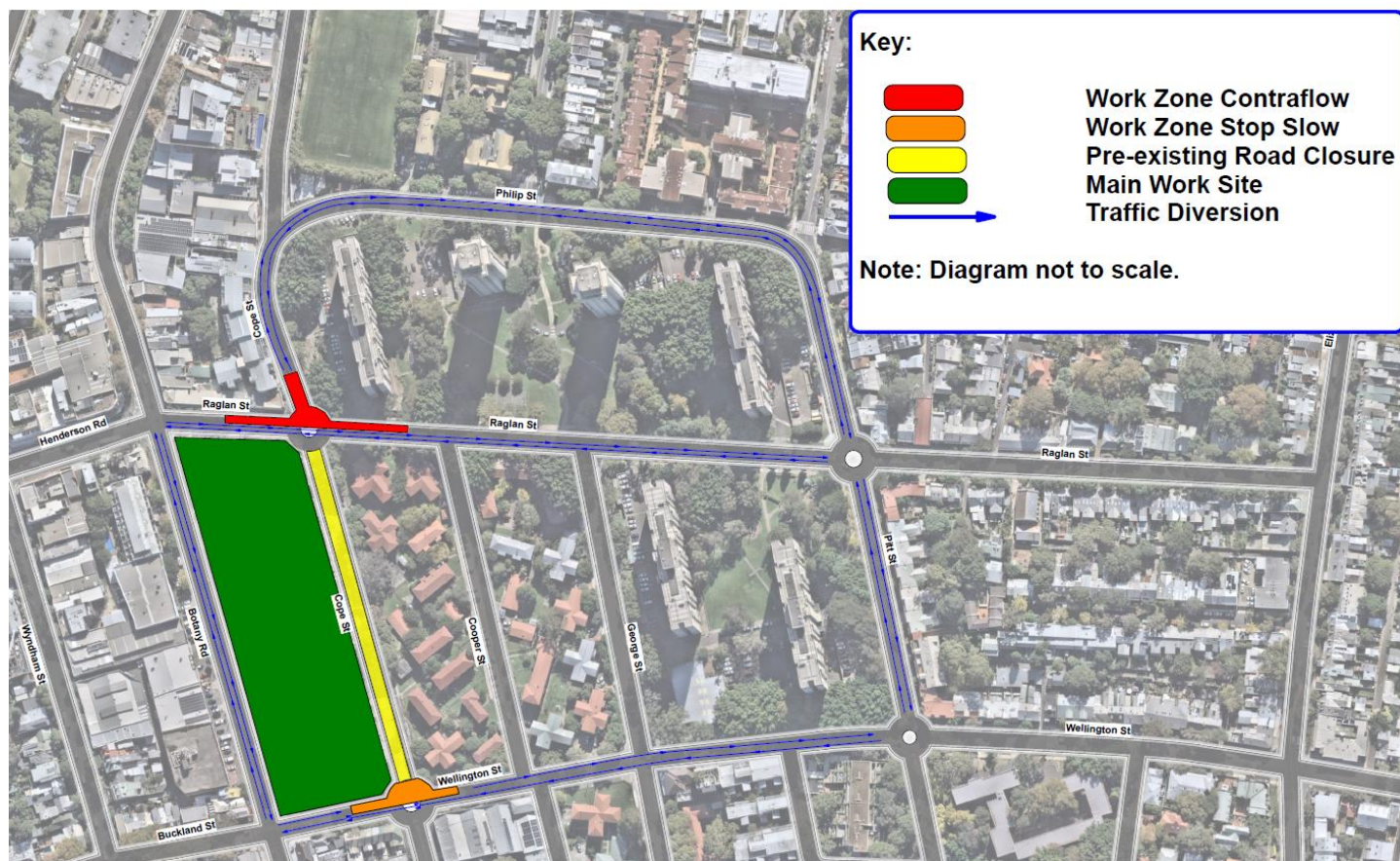
What to expect

- Machinery used during this work will include an asphalt paver, rollers, road profiler, excavators, concrete breaker, trucks and construction vehicles, hand, and power tools.
- Temporary traffic changes will be in place for the safety of workers and the community during this work, including reduced speed limits, footpath and lane closures.
- Due to the nature of the work, nearby residents may hear noise and feel vibration from some of the work. The project team will limit these impacts wherever possible. A range of mitigation measures are in place including, turning off equipment when not in use and, where possible, equipping machinery with non-tonal movement alarms. For high impact work such as hammering, there will also be respite periods of one hour following three hours of work.




If you have any questions, please contact Leanna Fuller on 1800 171 386 or email waterloometro@transport.nsw.gov.au
Thank you for your patience while we undertake these necessary works.


Detour Map



Contact us

 24-hour Community Information Line **1800 171 386**

 **sydneymetro@transport.nsw.gov.au**

 Sydney Metro City & Southwest, PO Box K659,
Haymarket NSW 1240



Translating and interpreting service

If you need help understanding this information, please contact the Translating and Interpreting Service on **131 450** and ask them to call us on **1800 171 386**