



Major work has commenced at Parramatta.

Major work has commenced at Parramatta

The NSW Government is delivering Sydney Metro West, a new underground metro railway which will double rail capacity between Parramatta and the Sydney CBD, linking new communities to rail services and support employment growth and housing supply.

Sydney Metro West stations have been confirmed at Westmead, Parramatta, Sydney Olympic Park, North Strathfield, Burwood North, Five Dock, The Bays, Pyrmont and Hunter Street in the Sydney CBD.

The Gamuda Australia and Laing O'Rourke Consortium (GLC) is delivering the Western Tunnelling Package. The project involves nine kilometres of twin metro rail tunnels between Westmead and Sydney Olympic Park, excavation for two new metro stations, a stabling and maintenance facility at Clyde and a precast facility at Eastern Creek.

Parramatta construction overview

Major construction is underway at the Parramatta metro station site. Construction of the diaphragm wall (D-wall) is progressing and will form the perimeter of the station box.

D-wall construction is complete on the eastern side of the site and excavation of the station box has commenced in this area. D-wall activities have progressed to the western side of the site and will continue until mid-2024.

Station box excavation and removal of excavated material is approved to occur 24 hours a day, seven days a week.

Heritage finds at Parramatta metro station site



Sydney Metro's archaeology team has uncovered a wealth of history during investigations at Sydney Metro's Parramatta station site.

Parramatta is a place of extraordinary history and diversity. Heritage investigations at Parramatta metro station site can provide new insights and understanding of Parramatta's importance to First Nations people, early colonial settlement and adaptation to a new environment, daily life and urbanisation during the 19th century, and the evolution of the township of Parramatta into the city it is today.

The Parramatta metro station site is within the historic core of Parramatta and the original town grid laid out in circa 1790-1792. The project provides a rare opportunity to investigate a city neighbourhood, with multiple phases of archaeology associated with thousands of years of Aboriginal occupation, Parramatta's colonial development. from an agricultural and convict settlement to a free-market town and then an urban centre by the late 19th century.

The community recently had the opportunity to visit the site for a Heritage Day event. Over 350 attendees joined Sydney Metro's archaeologists at the event, and were introduced to the archaeological investigations taking place, guided to a current dig site and presented with an overview of the techniques being used and the history of the structures and artefacts revealed including the previous presence of convict hut allotments, houses, businesses and horse stables.

The event showcased an extensive display of a variety of artefacts uncovered including tableware, glassware, ceramics and leather goods all related to use of the site over time.

Heritage investigations at the Parramatta metro station site have been ongoing since March 2022 and are now more than 50 per cent complete with nearly 100,000 artefacts uncovered. The remainder of heritage investigations will continue from mid 2024.

Indicative construction timeline

		We are here			
2021 to 2022	Mid 2022 to early 2023	Early 2023 to mid 2024	Late 2023 to late 2025	Mid 2024 to mid 2025	Late 2025
Site investigations and demolition	Site establishment	Construction of D-wall	Station box excavation	Construction of twin TBM tunnels	Site handover for station construction



Hard at work: Archaeologists busy excavating on site uncovering artefacts that tell us more about the history of Parramatta.



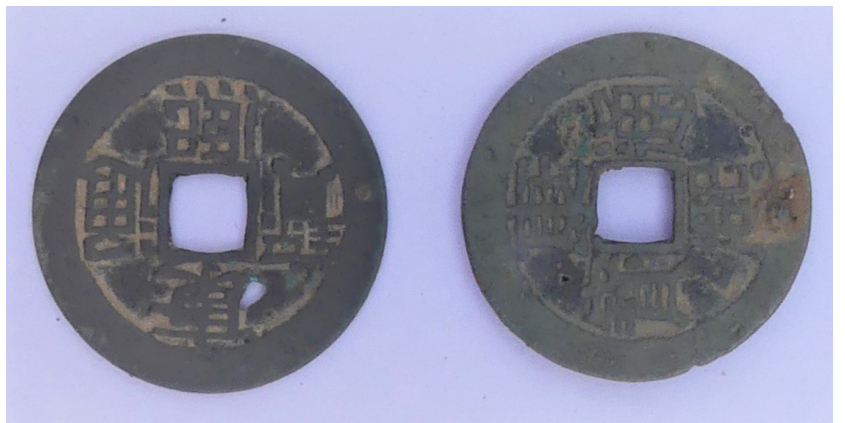
Dinner Time! Dining tables in 19th century Parramatta often showcased tableware made in Staffordshire, England, reflecting the global influence of British pottery during that era.



Kitchen Pantry: Many artefacts from the site can be traced back to the kitchen, including stoneware bottles for ginger beer, black glass bottles for beer and wine, torpedo shaped bottles for carbonated beverages and light green bottles for pickles.



Sydney Metro's archaeology team spoke with the community about the archaeological investigations taking place at Parramatta at the Heritage Day.

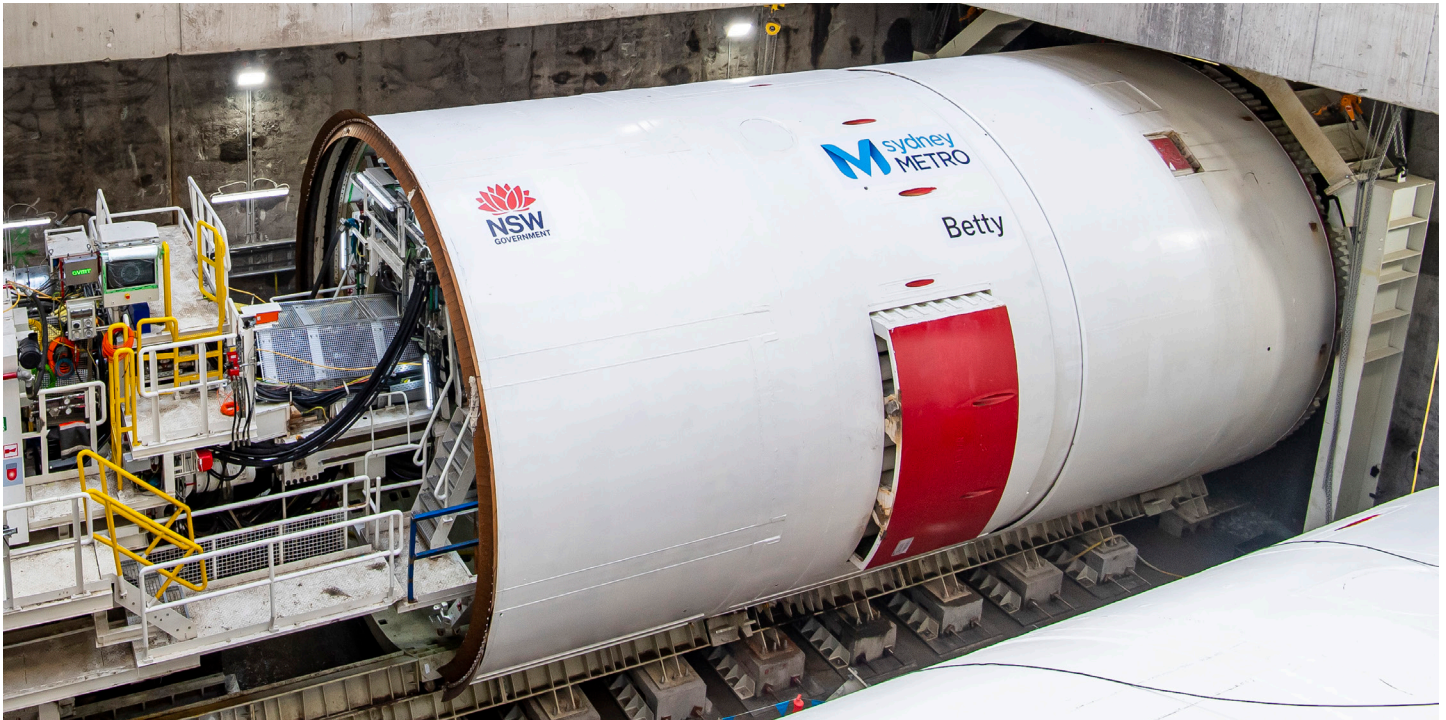


Migrant Life in Parramatta: Evidence of Chinese migrants, including coins and distinct ceramic vessels, have been found in underfloor deposits and rubbish pits on Macquarie and George Streets.

Six-month construction look ahead and out-of-hours work activities

Activity	Noise impact	December 2023	January 2024	February 2024	March 2024	April 2024	May 2024
Construction of diaphragm wall and station box excavation including removal of excavated material	Low	●	●	●	●	●	●
Delivery of machinery, materials and equipment	Low	●	●	●	●	●	●
Heritage investigations	Low						●

● Standard construction hours ● 24 hour work activities ● Out-of-hours work



Tunnelling progress

In late 2023, GLC achieved another major construction milestone with the launch of Australia's first autonomous Tunnel Boring machine (TBM) from the Rosehill TBM launch site. The TBM is making its way from Clyde to Sydney Olympic Park and is travelling an average of 200 metres every week (depending on ground conditions).

The autonomous TBM has artificial intelligence software developed by Gamuda installed inside the TBM, which has the capability to automatically steer, operate and monitor the machine. While an operator

always remains in control of the TBM, the autonomous algorithm takes on the machine's repetitive tasks leading to increased speed and greater accuracy.

Once the TBM arrives at Sydney Olympic Park, it will be retrieved and returned to Rosehill, where it will be relaunched towards Parramatta and Westmead. It is expected to arrive at Parramatta in mid 2025.

To view the interactive map, visit caportal.com.au/tfnsw/sydmetrowest/map.

Contact us

If you have any questions or would like more information please contact our project team:

1800 612 173 Community infoline open 24 hours

metrotunnelsGLC@transport.nsw.gov.au

Sydney Metro West

PO Box K659, Haymarket NSW 1240



Translating and interpreting service

If you need help understanding this information, please contact the Translating and Interpreting Service on 131 450 and ask them to call us on 1800 612 173.



Access information in over 100 languages.

Download **Sydney Metro Connect** from the App store or get it on Google Play.

